

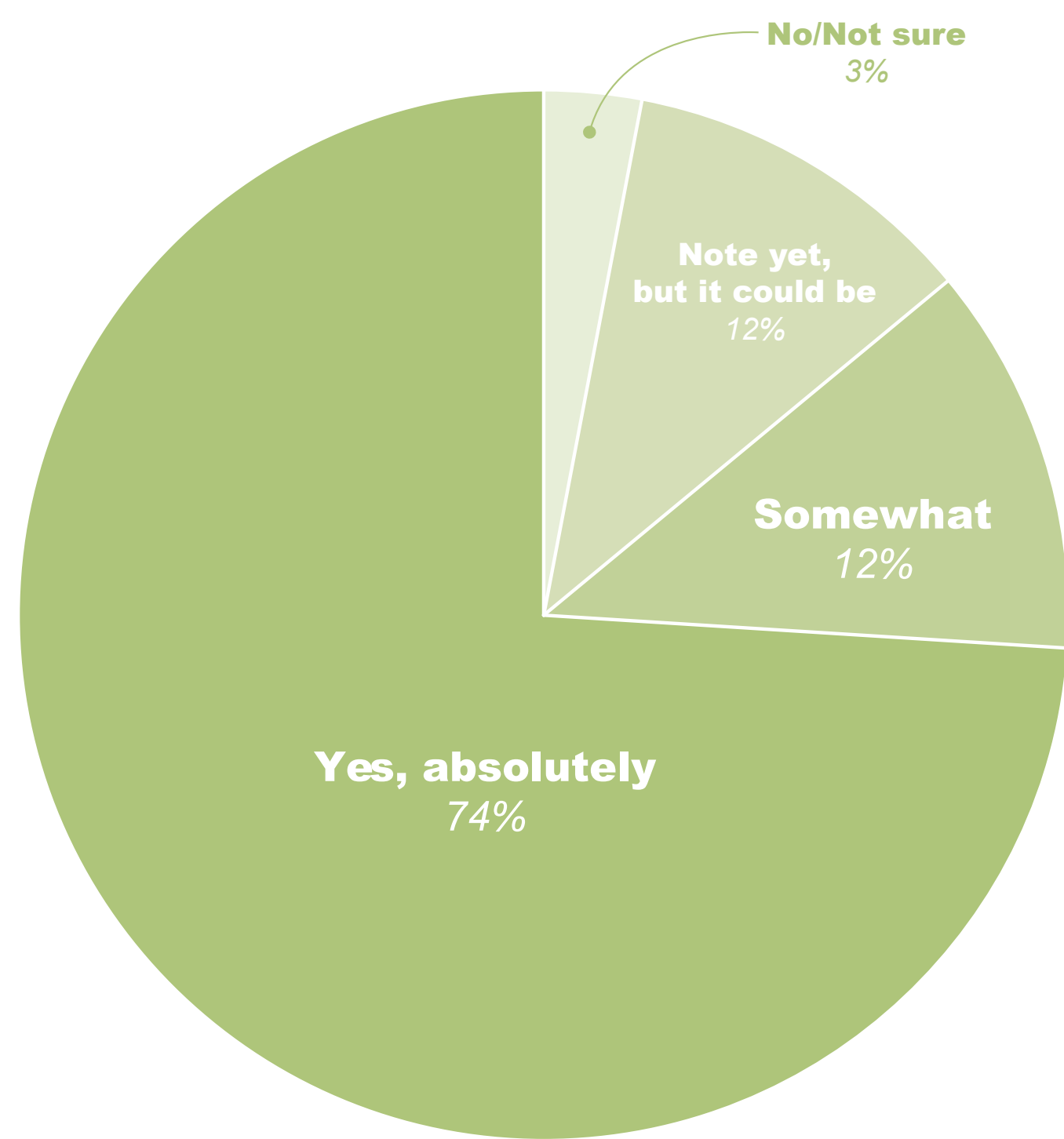
WHAT WE HEARD

HERE'S A SUMMARY OF THE COMMUNITY INPUT THAT WE RECEIVED FROM COMMUNITY MEETING 1 AND THE ONLINE SURVEY.

YOUR CURRENT IMPRESSIONS OF ORO LOMA MARSH

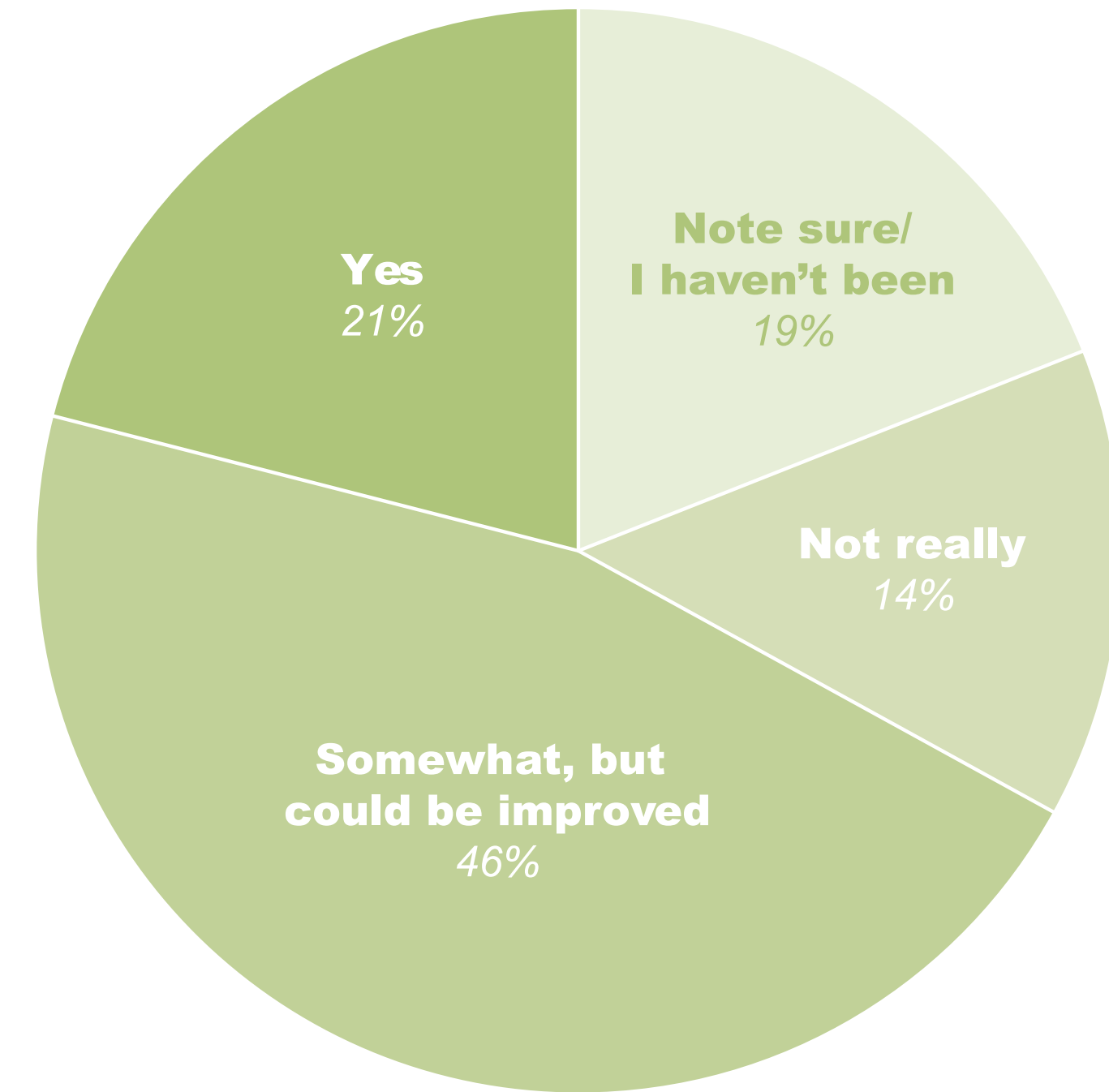
DO YOU CONSIDER THE ORO LOMA MARSH TO BE A COMMUNITY ASSET?

(91 RESPONSES)



DO YOU FEEL THAT ORO MARSH IS SAFE AND WELCOMING FOR BOTH PEOPLE AND WILDLIFE TO VISIT?

(92 RESPONSES)



ACCESS & RECREATION

- THE SURROUNDING SAN LORENZO COMMUNITY PARK, SKYWEST GOLF COURSE, AND BAY TRAIL ARE WELL USED AND KNOWN
- FENCES IN THE AREA ARE UNAPPEALING AND RESTRICT ACCESS TO THE MARSH



NATURE & STEWARDSHIP

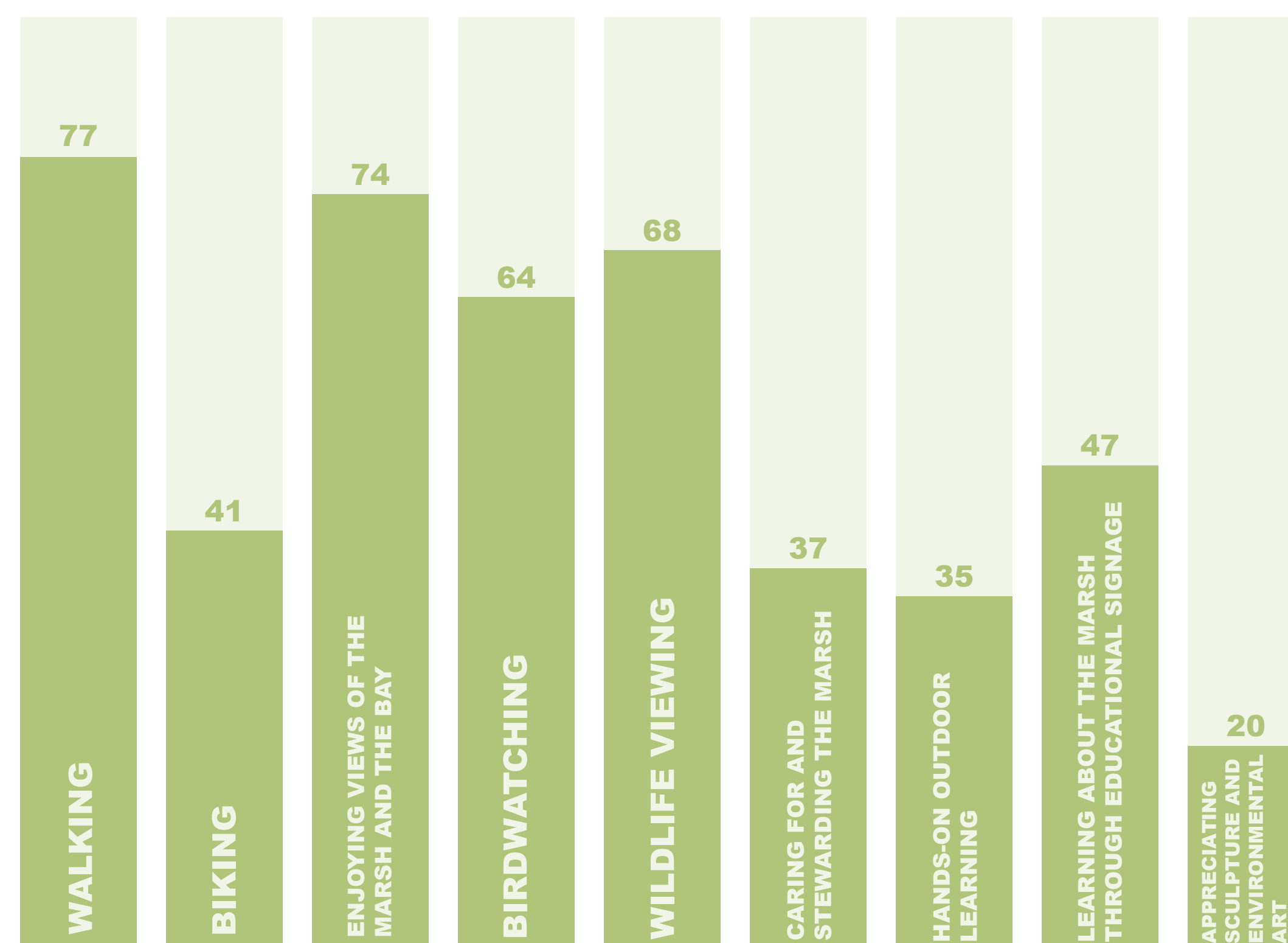
- UNAWARE OF THE ORO LOMA MARSH AND ITS FUNCTION. PERCEIVED AS NOT CARED FOR
- SKYWEST GOLF COURSE IS A PLACE TO SEE MONARCH BUTTERFLIES AND POND TURTLES
- THE MARSH HANDLES SEDIMENT TRANSPORT FROM CREEK TO BAY SHORE



EDUCATION & ART

- HIGH SCHOOL STUDENTS VISITED THE HORIZONTAL LEVEE DEMONSTRATION AT ORO LOMA WASTEWATER TREATMENT PLANT
- WHALE MURAL IS THE ONLY THING THAT LOOKS PRETTY ALONG THE SHORELINE

WHAT YOU IMAGINE DOING ALONG ORO LOMA MARSH

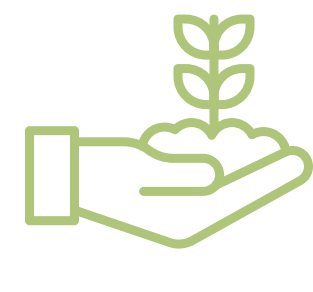


(91 RESPONSES)



ACCESS & RECREATION

- SITTING AND ENJOYING VIEWS
- SHADE
- WALKING ON A TRAIL THROUGH THE ORO LOMA MARSH
- MOVING VIA BIKE, ROLLER BLADES, SKATE BOARD, AND CAR-FREE TRANSPORTATION TO SAN LORENZO PARK, BAY TRAIL, AND BETWEEN NEIGHBORHOODS
- ENJOYING A WELL MAINTAINED WALKING TRAIL AND PARK FOR CENTURIES TO COME



NATURE & STEWARDSHIP

- VIEWING AND MONITORING WILDLIFE
- PROTECTING WILDLIFE HABITAT FROM ACCESS
- VIEWING A LIVE STREAM OF THE MARSH



EDUCATION & ART

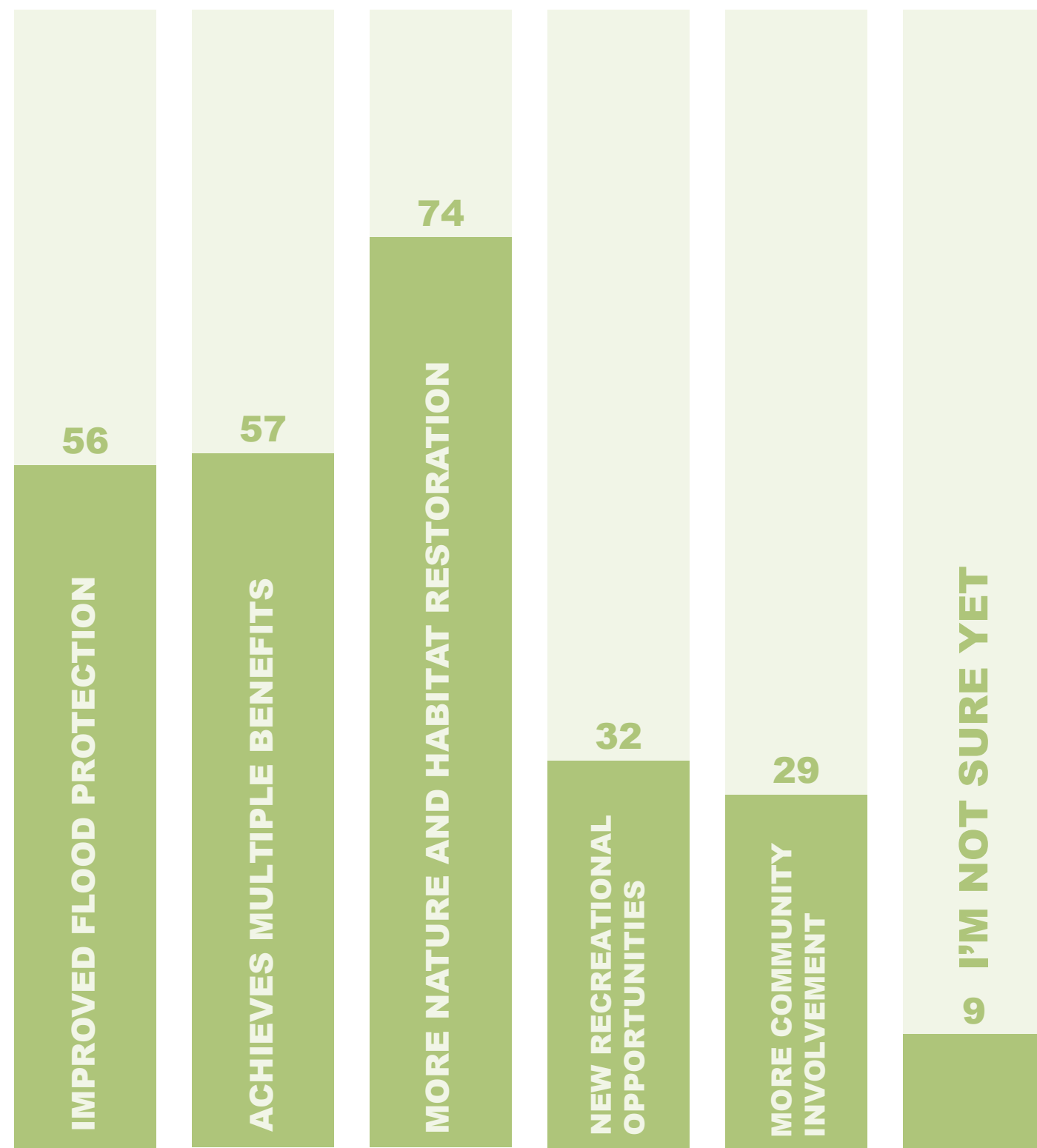
- GETTING SCHOOL STUDENTS TO THE SHORELINE
- LEARNING ABOUT THE SHORELINE, WILDLIFE HABITAT, PLANTS, WILDLIFE, STEWARDSHIP, ETC. THROUGH QR CODES, SIGNAGE, AND AN INFO BOOTH

WHAT WE HEARD

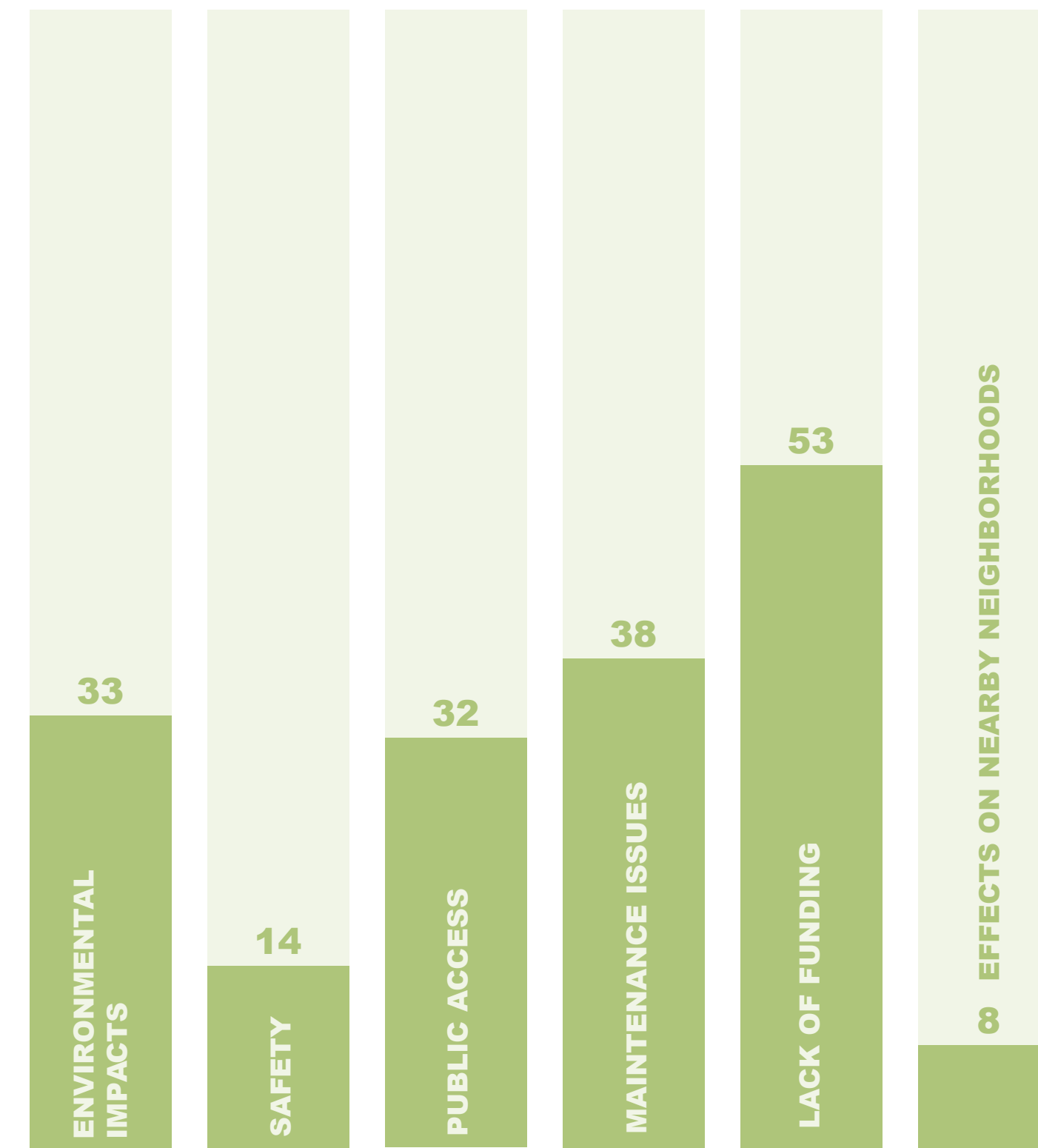
HERE'S A SUMMARY OF THE COMMUNITY INPUT THAT WE RECEIVED FROM COMMUNITY MEETING 1 AND THE ONLINE SURVEY.

WHAT YOU'RE EXCITED AND CONCERNED ABOUT WITH THE FIRST MILE PROJECT

WHAT EXCITES YOU ABOUT THE FIRST MILE SHORELINE PROJECT?
(93 RESPONSES)



WHAT CONCERNS DO YOU HAVE ABOUT THE FIRST MILE PROJECT?
(88 RESPONSES)



FLOOD & SEA LEVEL RISE

- QUESTIONS ABOUT LONG-TERM PROTECTION OF ORO LOMA MARSH AND POTENTIAL MARSH LOSS FROM SEA LEVEL RISE
- NEEDING CLARITY ON PROJECT GOALS: PROTECTING MARSH, TRAILS, COMMUNITY, AND INFRASTRUCTURE
- QUESTIONS ABOUT THE EFFECTIVENESS AND SCALE OF THE FIRST MILE PROJECT
- INTEREST IN COMPARING STRATEGIES (E.G., LEVEE VS. FLOOD WALL/VERTICAL LEVEE) FOR LONG-TERM RESILIENCE



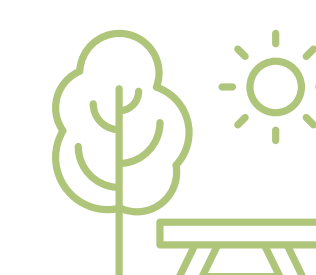
ACCESS & RECREATION

- PROVIDING SAFE AND ACCESSIBLE BIKE AND PEDESTRIAN PUBLIC ACCESS TO SHORELINE



NATURE & HABITAT

- PROTECTING AND ENHANCING HABITAT FOR MIGRATORY AND RESIDENT BIRDS, SALMON/ STEELHEAD, MONARCHS, AND OTHER WILDLIFE
- USING NATIVE PLANTS AND HABITAT-FOCUSED PLANTING
- INCORPORATING STORMWATER MANAGEMENT STRATEGIES



AMENITIES & SERVICES

- ADDING USER AMENITIES: TRASH CANS, BATHROOMS, BENCHES, PICNIC TABLES, WIND PROTECTION
- INTERESTED IN TARGETED INFORMATIONAL SIGNAGE



IMPLEMENTATION

- CONTINUING COMMUNITY EDUCATION AND ENGAGEMENT
- SECURING FUNDING AND APPLY LESSONS LEARNED TO FUTURE RESILIENCE PROJECTS
- PROVIDING OPPORTUNITIES FOR COMMUNITY VOLUNTEERING

OPPORTUNITIES AND CONSIDERATIONS BEYOND THIS PROJECT



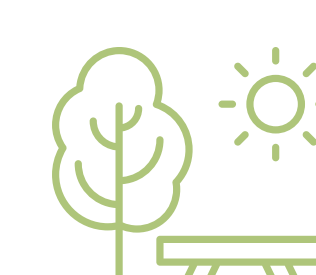
ACCESS & RECREATION

- BIKING ON A DESIGNATED BIKE TRAIL SEPARATE FROM THE WALKERS
- IMPROVE PUBLIC TRANSIT CONNECTIONS TO SHORELINE
- CREATING CONNECTED BIKE/PEDESTRIAN ROUTES LINKING KEY NEIGHBORHOOD DESTINATIONS
- DESIRE FOR PHYSICAL CONNECTION TO SAN LORENZO COMMUNITY PARK
- CONCERNED ABOUT THE MANAGEMENT OF SCOOTERS/ E-BIKES/MOTORCYCLES



NATURE & HABITAT

- MAINTAINING SKYWEST AS GREEN SPACE AND STRENGTHENING WILDLIFE CORRIDORS



AMENITIES & SERVICES

- CONSIDERING AN ON-SITE RANGER

ANYTHING THAT WE MISSED?

.....

.....

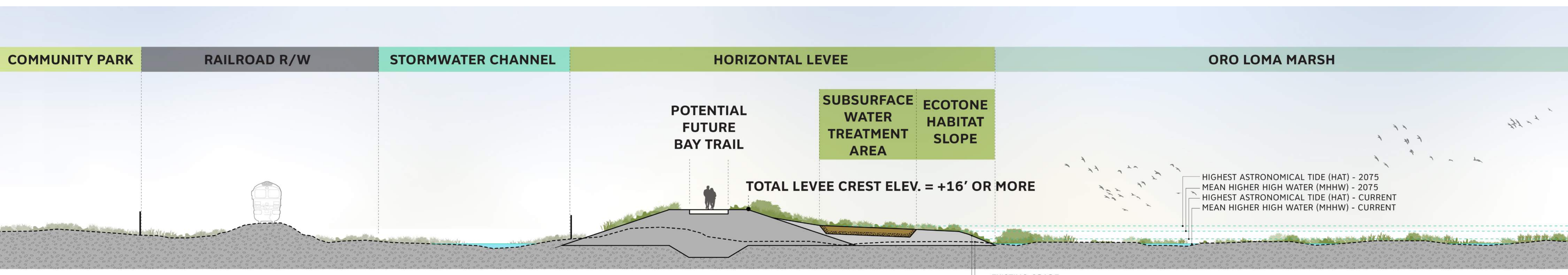
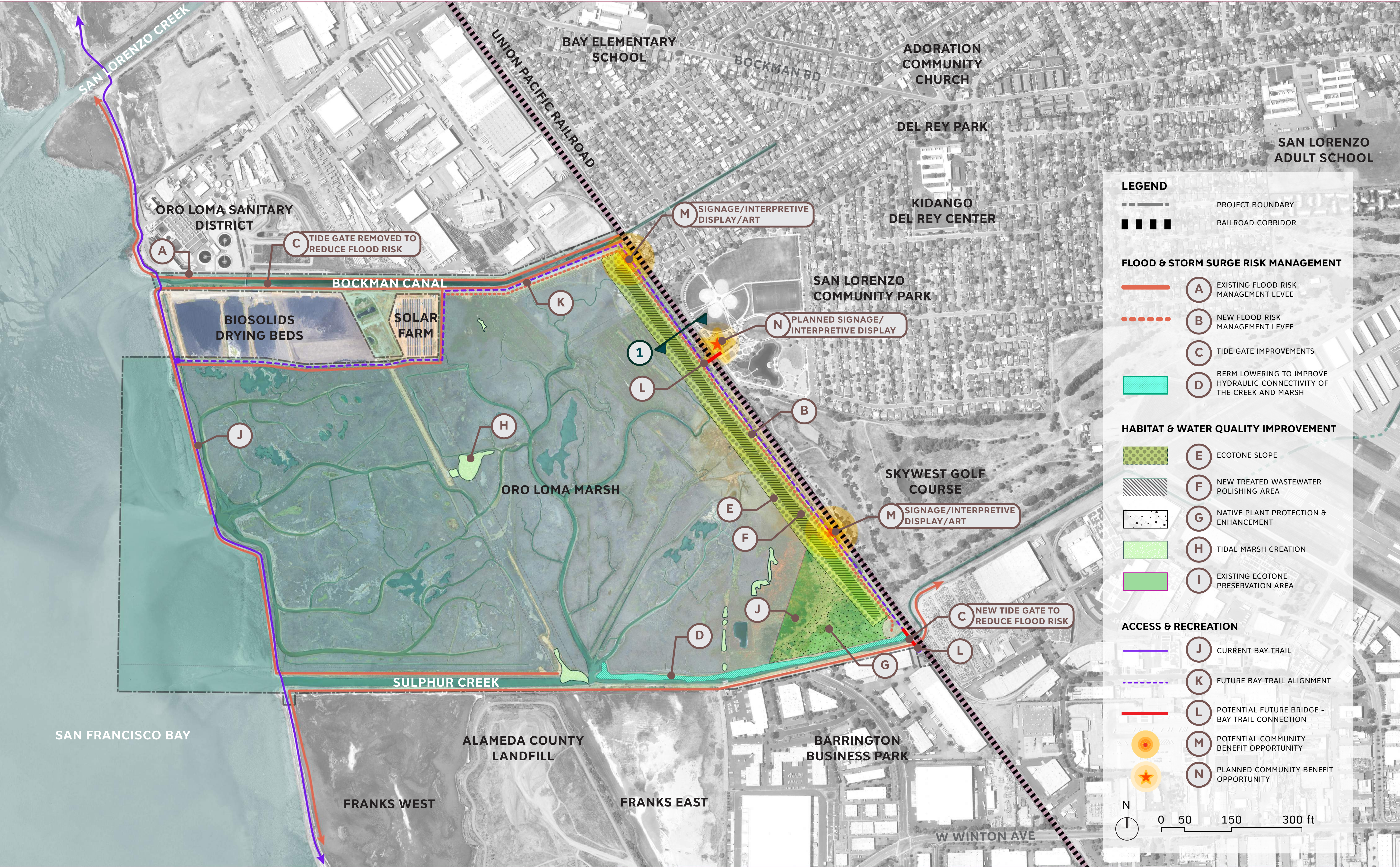
.....

.....

.....

PROPOSED HORIZONTAL LEVELLE AT ORO LOMA MARSH

THE FIRST MILE HORIZONTAL LEVELLE PROJECT PROPOSES A NEW APPROACH TO SEA LEVEL RISE RESILIENCE AT ORO LOMA MARSH—CREATING A “HORIZONTAL LEVELLE” THAT REDUCES FLOOD RISK AND IMPROVES WATER QUALITY WHILE PROVIDING VALUABLE HABITAT FOR WILDLIFE AND COMMUNITY ACCESS.



SECTION 1
AT HORIZONTAL LEVELLE

NOTE: DESIGN FOR HORIZONTAL LEVELLE (LAYOUT, SLOPE, AND ALIGNMENT) IS UNDER DEVELOPMENT AND IS SUBJECT TO CHANGE.

LET US KNOW WHAT EXCITES YOU MOST ABOUT THE FIRST MILE HORIZONTAL LEVELLE PROJECT AND ANY CONCERNS:

.....

.....

.....