

# Addressing Cumulative Impacts

*Through Meaningful Partnerships, Community Engagement, and Policy Advocacy*

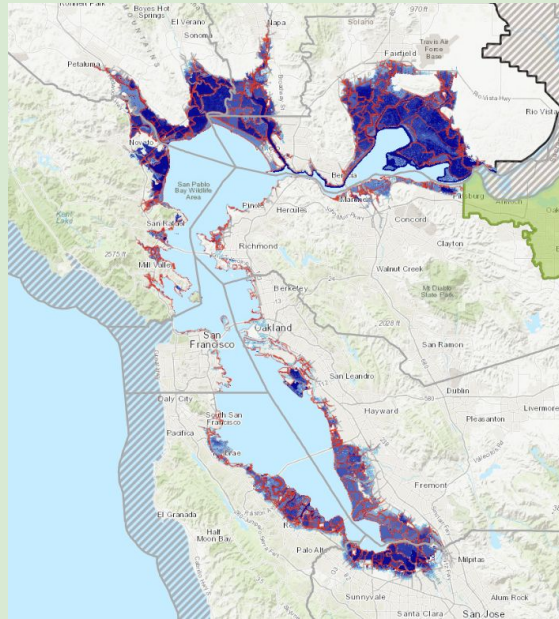


**GREENACTION**

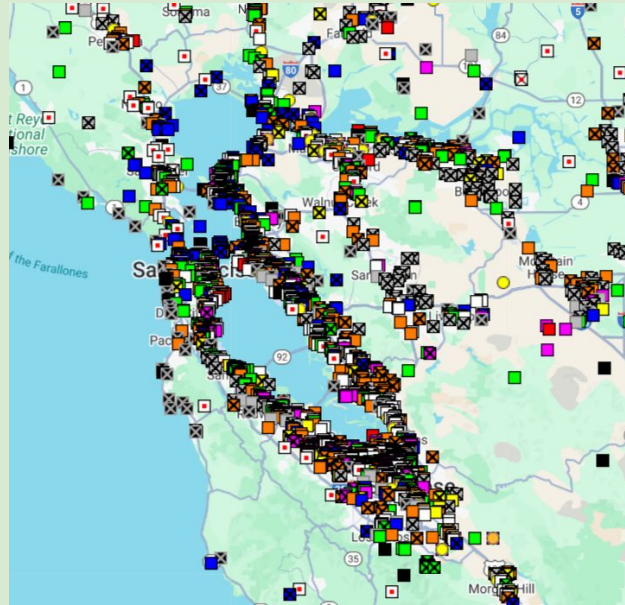
for Health & Environmental Justice

---

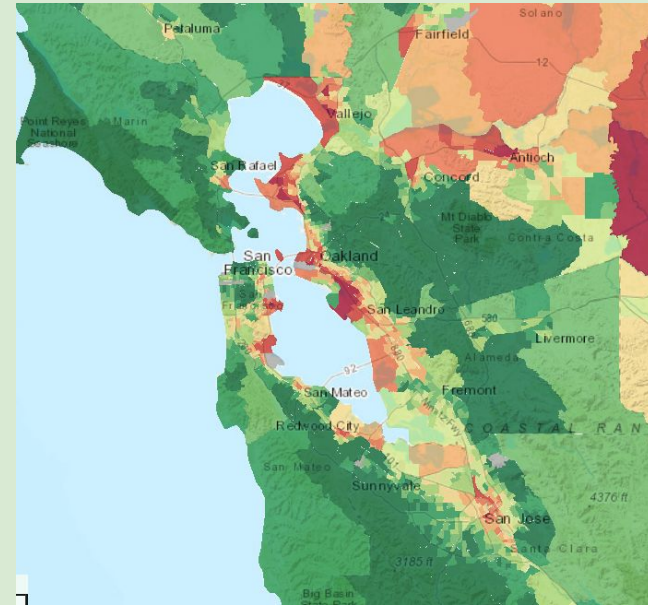
# Groundwater Rise Threatens San Francisco Bay Area Communities



Adapting to Rising Tides Bay  
Shoreline Flood Explorer Map



Department of Toxic  
Substance Control  
EnviroStor Database



CalEnviroScreen 4.0  
Environmental Justice Screening  
Tool by OEHHA

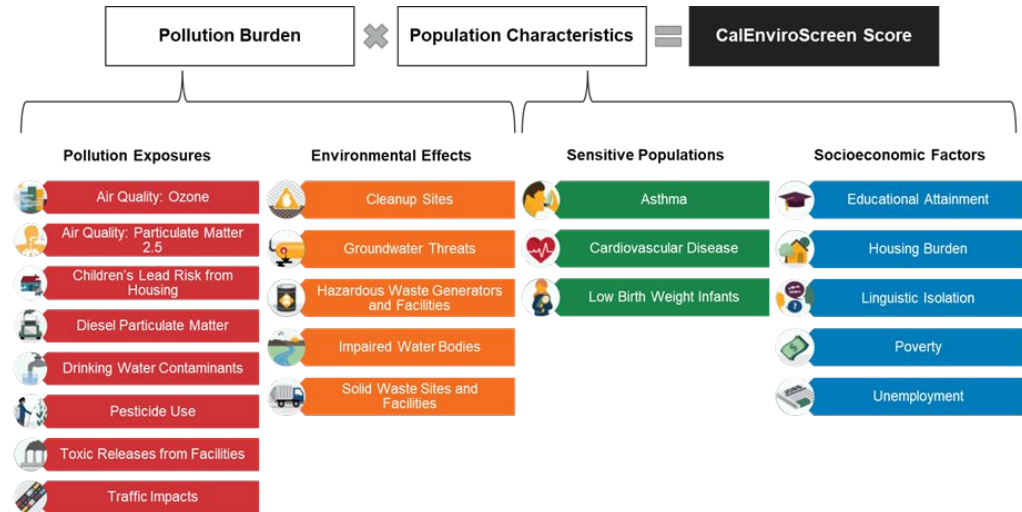
***Environmental Racism and Social Vulnerability Increase the Risk***

---

# Addressing *Cumulative* Impacts

*The combination of different factors together result in a higher, often more dangerous, impact. To understand the full impact to community health and safety, indicators cannot be measured independently.*

- Historical context cannot be ignored
- Environmental Racism targets BIPOC Communities
- Centering the most impacted communities will produce robust and thorough research



Sources: Raimi + Associates. Graphic Elements adapted from California Office of Environmental Health Hazard Assessment CalEnviroScreen 4.0 Webpage and Report.

# Meaningful Partnerships & Engagement

- Connecting academic research with on the ground community based organizations, *while the research is being done*
  - *Sharing deliverables shaped by engagement directly from the research*
  - *Academic research done **with** communities rather than **on** them*
    - *With fair compensation!*
- Coalition building, *growing solidarity, support, and strength*
  - *Regional and Statewide partnerships*
- Community outreach and education, *sparking interest and answering questions*
  - *In-person organizing on a near-daily basis*

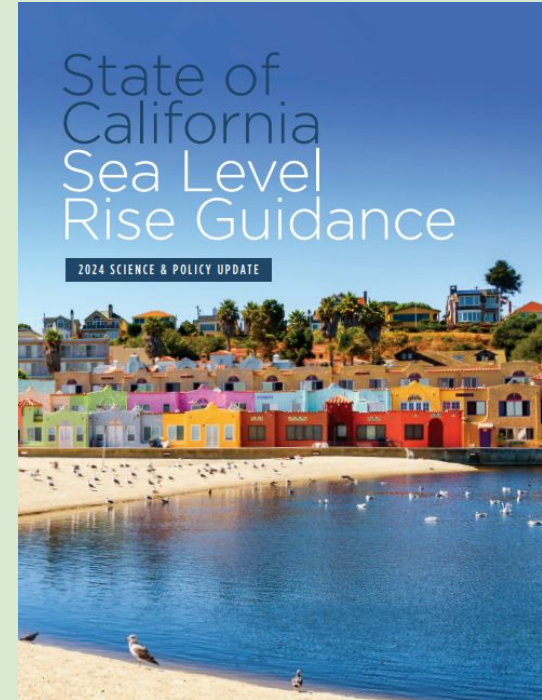
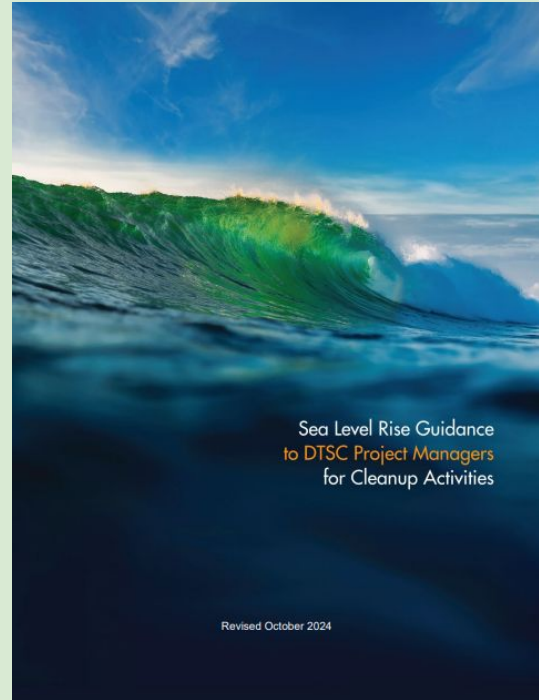
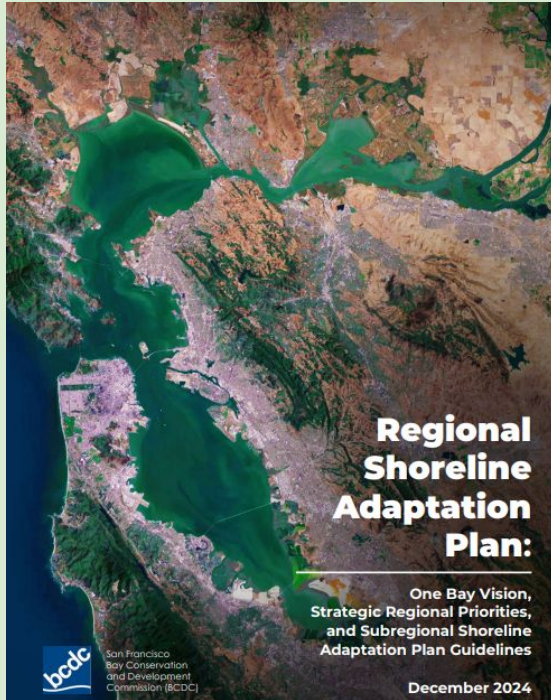
# San Francisco Bay Shoreline Contamination Cleanup Coalition



- Common fight among shoreline communities
- Repeating patterns
- Working with the same agencies
- Regional and state policy affects us all



# Agencies Started Listening



*But where is the action on the ground?*

# ***In Your Work, Advocacy, and Organizing, Remember:***

- ❖ Climate Change and Shoreline Contamination in the Bay Area Pose a Risk to Public Health, the Health of the Estuary, and Thousands of Communities.
  - We cannot allow radioactive and toxic waste to be capped along the shoreline
- ❖ Environmental Racism and Discriminatory Practices Threaten the Lives of Black, Indigenous, and Other Communities of Color
  - We must actively work to ensure environmental justice is prioritized
- ❖ Engage with the Most Impacted Communities, Build Solidarity
  - Including their direct input in your research, policy, advocacy, organizing, etc



**Support Greenaction!**

Website [www.greenaction.org](http://www.greenaction.org)

Instagram [@Greenaction\\_EJ](https://www.instagram.com/Greenaction_EJ)

Facebook [/Greenaction4EJ](https://www.facebook.com/Greenaction4EJ)

# THANK YOU



**Skylar Sacoolas**

[skylar@greenaction.org](mailto:skylar@greenaction.org)

**Greenaction for Health and Environmental Justice**