



East Bay Crescent Shoreline Adaptation Planning

SFEP Implementation Committee

Heidi Nutters, Principal Program Manager, San Francisco
Estuary Partnership



San Francisco
ESTUARY PARTNERSHIP



Partnership in Action

Photo: Ben Bokun

Adaptation and Resilience Technical Assistance

SFEP's Adaptation and Resilience Technical Assistance Program provides support to local governments, community-based organizations, and Tribes. Its operational framework is based on the Estuary Blueprint that aims to:

1. Increase the pace and scale of on the ground resilience strategies both at the subregional scale and for individual projects
2. Partner with local governments, community-based organizations and Tribes to fund, plan and deliver nature-based shoreline adaptation projects across the SF Bay region
3. Advance a range of project types and pilot projects, including horizontal levees, ecotones and living shorelines.



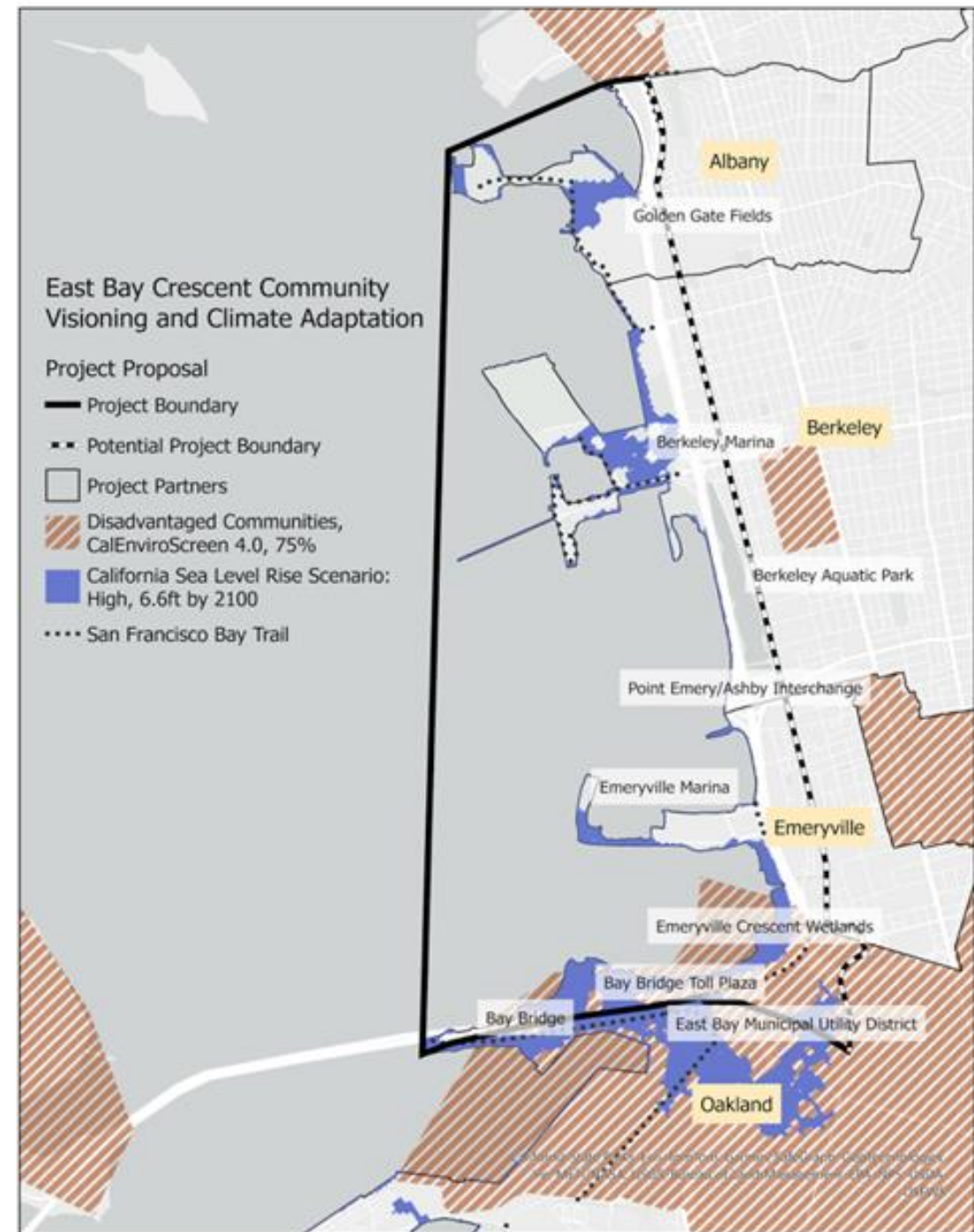
We partner with communities around the region to support on the ground shoreline nature-based solutions projects

<https://www.sfestuary.org/truw/>



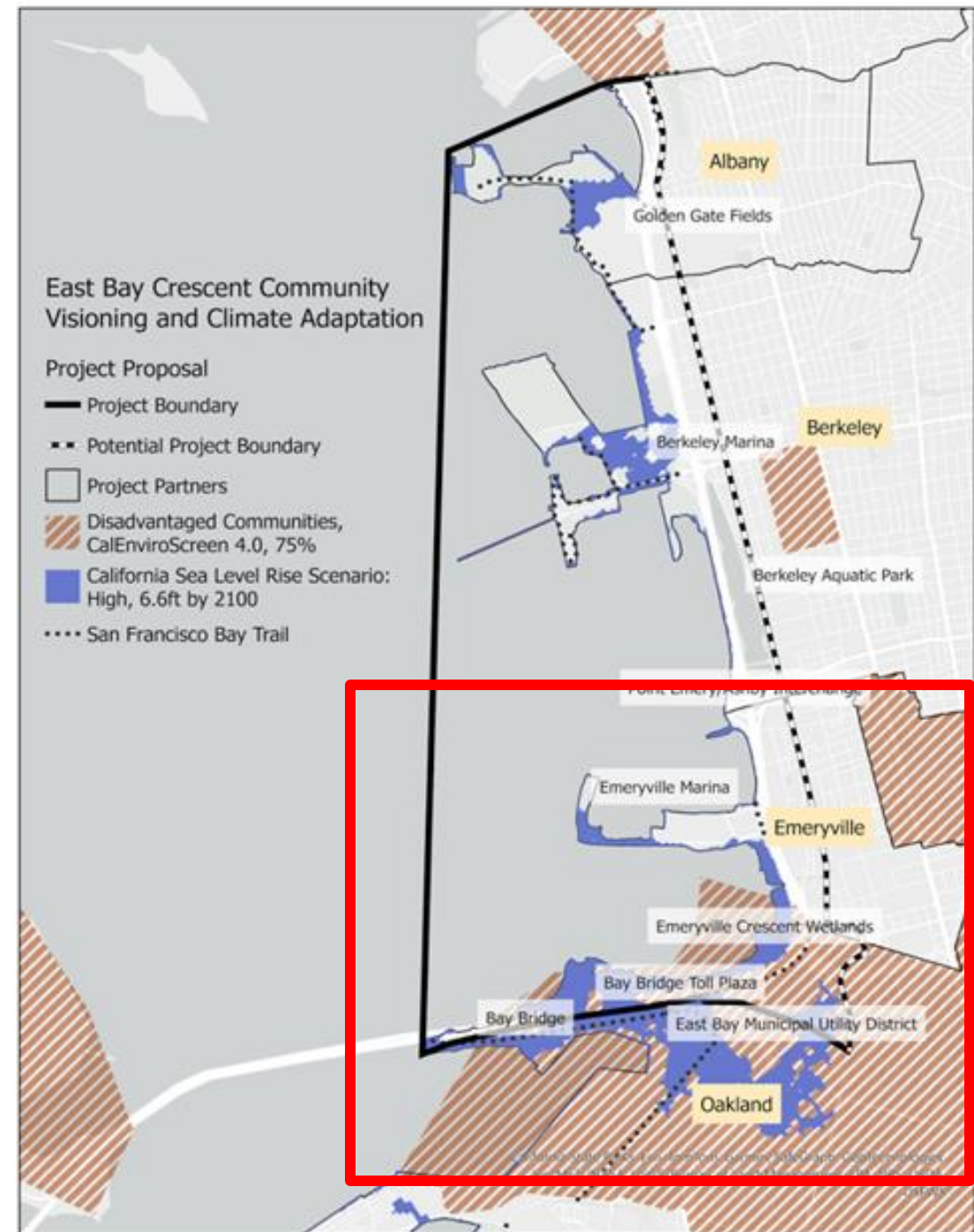
Initial Drivers

- Push toward subregional, multi-jurisdictional planning
- Regional Shoreline Adaptation Plan(RSAP)
- Partner interest to embark in coordinated planning
- Initial push for community engagement and early planning in the Emeryville Crescent



Initial Drivers

- Push toward subregional, multi-jurisdictional planning
- Regional Shoreline Adaptation Plan(RSAP)
- Partner interest to embark in coordinated planning
- Initial push for community engagement and early planning in the Emeryville Crescent



Emeryville Crescent

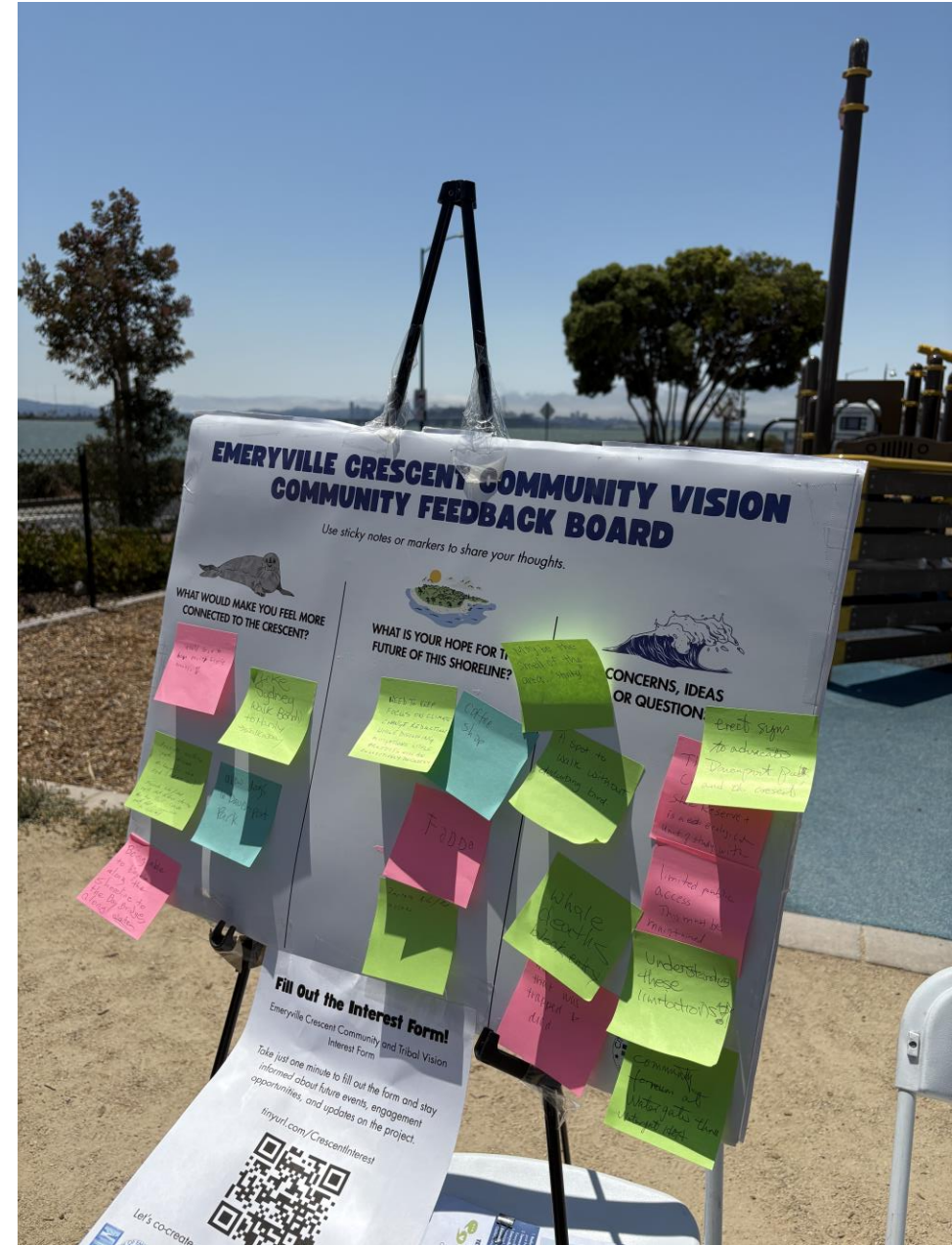
- Complex land ownership
- Ring of mudflat, beach and tidal marsh situated next to critical transportation linkages including the Bay Bridge
- Habitats reduce wave energy and protect infrastructure
- Sediment inputs and restoration actions are needed to bolster resilience
- Dynamic area for recreation – but needs significant safety and access improvements



Community Perspectives

- Informal Working Group
- Survey
- Interviews
- Community Workshops – with youth and adults
- “Community Day”

co:census



Overarching Themes



Theme 1: Access & Infrastructure



Theme 2: Environmental Preservation & Resilience



Theme 3: Community Engagement & Inclusion



Theme 4: Facilities & Amenities



Theme 5: Stewardship & Cultural Recognition

co:census



Outcomes

- Shared direction for partners
- Deeper understanding of core issues
- Cohesive approach for an RSAP
- Readiness to forge a path forward



EAST BAY CRESCENT COMMUNITY VISIONING AND CLIMATE ADAPTATION



Project Workplan

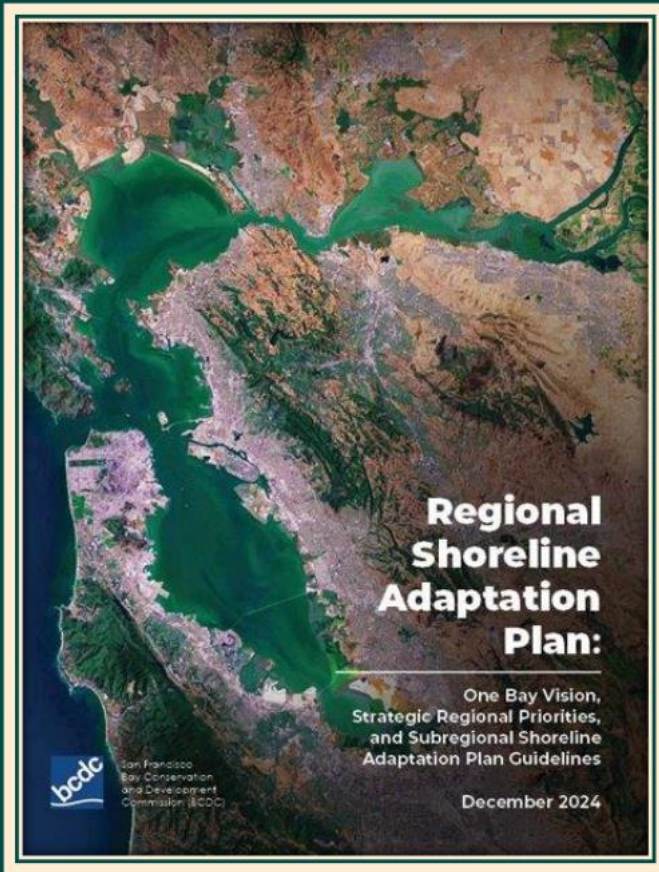
Years: 2025 – 2028

Budget: \$2,240,000



What is the RSAP?

A regional plan to address sea level rise and guides the creation of Plans.



- ✓ **One Bay Vision**
A community vision for the Bay.
- ✓ **Strategic Regional Priorities**
8 regional issues to address in planning.
- ✓ **Plan Guidelines**
Requirements for creating a Plan.

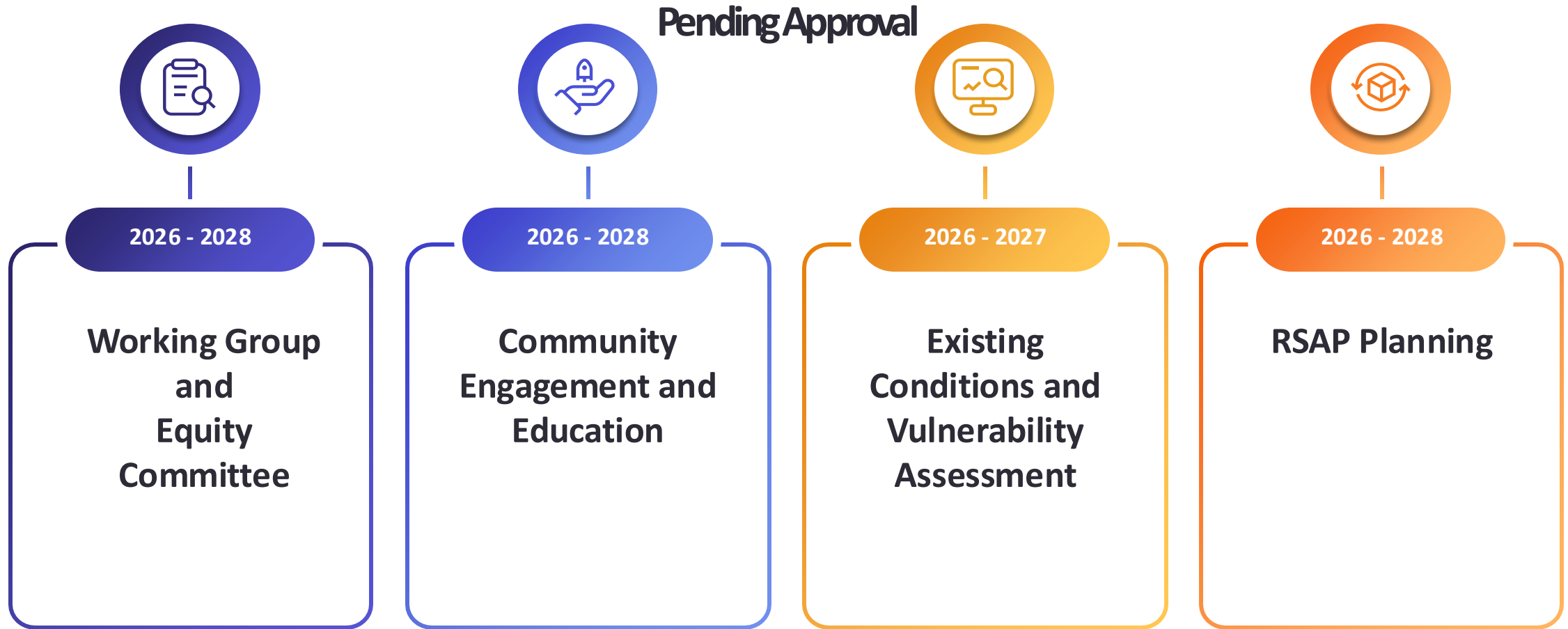
Proposed Project Goals

1. Advance sea-level rise adaptation along the East Bay Crescent (EBC) shoreline.
2. Establish an EBC Working Group and Equity Committee to guide collaborative adaptation planning.
3. Conduct a sub-regional vulnerability assessment (VA).
4. Develop sub-regionally coordinated shoreline adaptation plans for Albany, Berkeley, and Emeryville, aligned with BCDC's Regional Shoreline Adaptation Plan (RSAP) guidelines.
5. Center community priorities in the development and coordination of adaptation plans, ensuring equitable and locally relevant outcomes.



Photo: Joey Kotfica

Major Phases of Work



Key Tasks -- Working Group and Equity Committee

Task Summary:

- SFEP will lead coordination of the EBC Working Group (WG), which will meet quarterly to guide development of key deliverables and clarify city roles in strategy implementation.
- Formation of an Equity Committee (EC) of up to six members from CBOs and Tribes, who will help shape the Community Education and Engagement Plan and ensure community priorities are reflected.

Overall Lead: co:census and SFEP



Key Tasks - Community Engagement and Education

Task Summary:

- Develop a Community Education and Engagement Plan (CEP) in collaboration with cities and the Equity Committee (EC)
- Community survey ensuring inclusive participation and language accessibility.
- Seven workshops—two subregional and 3 city-based—to gather input on exposure, vulnerability, goals, and adaptation strategies.
- Neighborhood-level walking tours in Albany, Berkeley, and Emeryville will collect experiential data to create a community asset map, while previous engagement in Oakland will be summarized.

Overall Lead: co:census and SFEP

Key Tasks -- Existing Conditions Report and Vulnerability Assessment

Task Summary:

- Existing Conditions Report and Vulnerability Assessment in alignment with BCDC's RSAP Elements B and C.
- The Existing Conditions Report will compile data on physical, ecological, and community characteristics across jurisdictions, with CMG focusing on public access and open space, and SFEI providing technical datasets.
- The Vulnerability Assessment will include exposure analysis and evaluation of priority areas, incorporating asset data from cities and addressing groundwater rise impacts. Both reports will be reviewed by the EBC Working Group and Equity Committee, and supported by GIS and geodatabase tools for future planning.

Overall Lead: Pathways Climate Institute and CMG Landscape Architecture

Key Tasks -- RSAP Planning

Task Summary:

- Develop adaptation strategies for sea level rise, informed by community input and led by CMG, Pathways, and SFEI.
- Land use and policy planning, implementation and funding strategies,
- Prepare RSAP packages for BCDC.
- BCDC Consultations
- Cities will coordinate consultations and move plans through internal review and adoption, with consultant support throughout.

Overall Leads: SFEP, CMG, Pathways, City of Albany, Emeryville and Berkeley

Priorities for 2025-2026 Startup

01

**Working Group
and Equity
Committee**

Early 2026 and
ongoing



02

**Workplan,
Grant
Agreement,
Contracting**

Spring 2026



03

**Community
Engagement,
Workshops,
Walking Tours**

Summer 2026
and ongoing



04

**Existing
Conditions
Report and
Exposure Maps**

Fall 2026



05

**Vulnerability
Assessment**

Winter 2026
into 2027



Thank You

Have Questions?

Heidi Nutters (Principal Program Manager): heidi.nutters@sfestuary.org

Natalie Rossi (CA Sea Grant State Fellow): natalie.rossi@sfestuary.org



San Francisco
ESTUARY
PARTNERSHIP



<https://www.sfestuary.org/54191-2/>