



Novato Creek Baylands: State Route 37 and Climate Adaptation at the OLU Scale

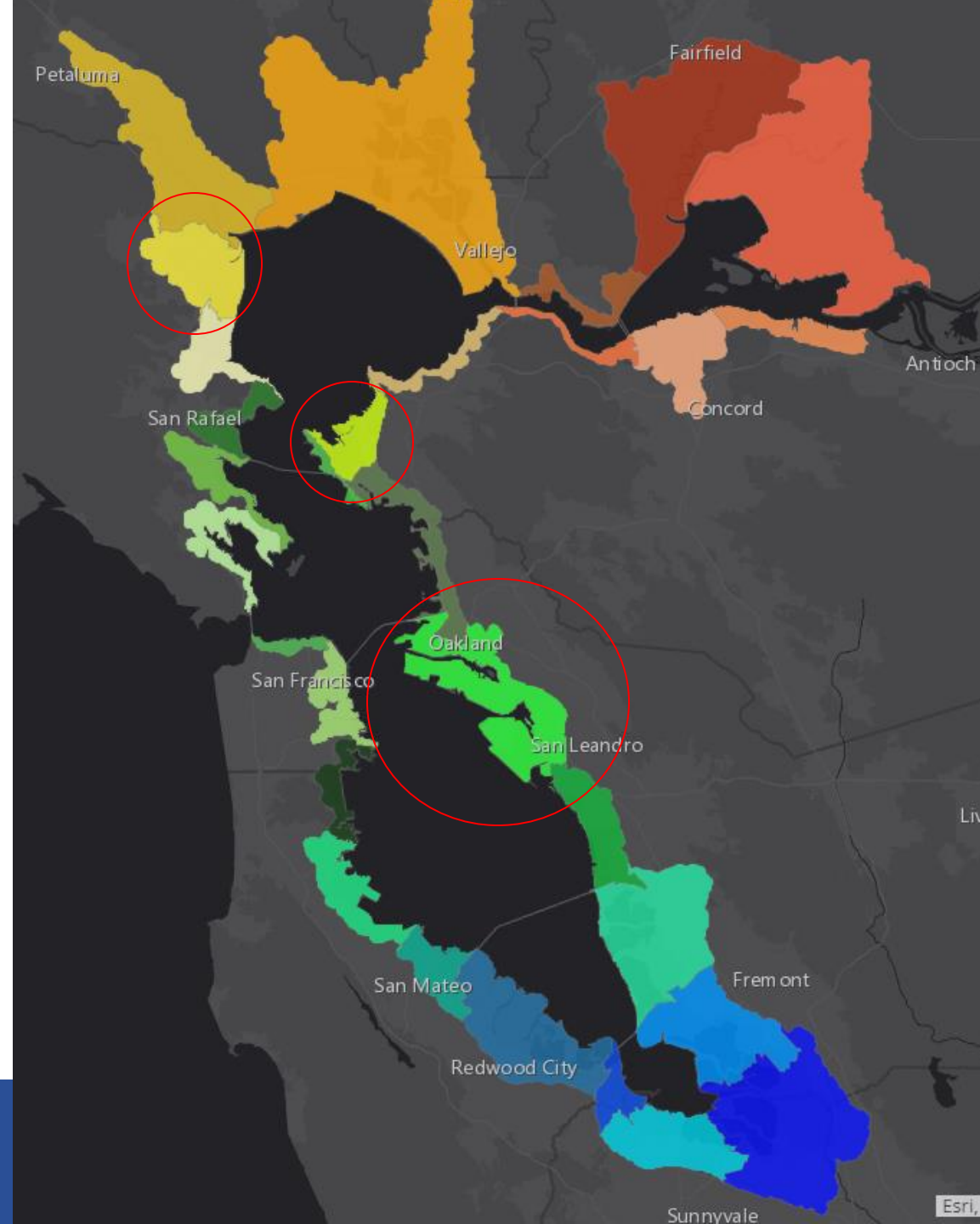
Implementation Committee Meeting
November 6, 2024



San Francisco
ESTUARY PARTNERSHIP

Climate Change Adaptation

- Working at the project level and Operational Landscape Unit (OLU) scale
 - San Leandro, Wildcat, and Novato OLUs
 - Bipartisan Infrastructure Law Funding
- Goal is to advance locally led planning to increase the speed of climate change adaptation



Resilient 37- Regional Adaptation & Resilience

- Adapting critical North Bay corridor to sea level rise
- Improving travel & access
- Facilitating baylands restoration



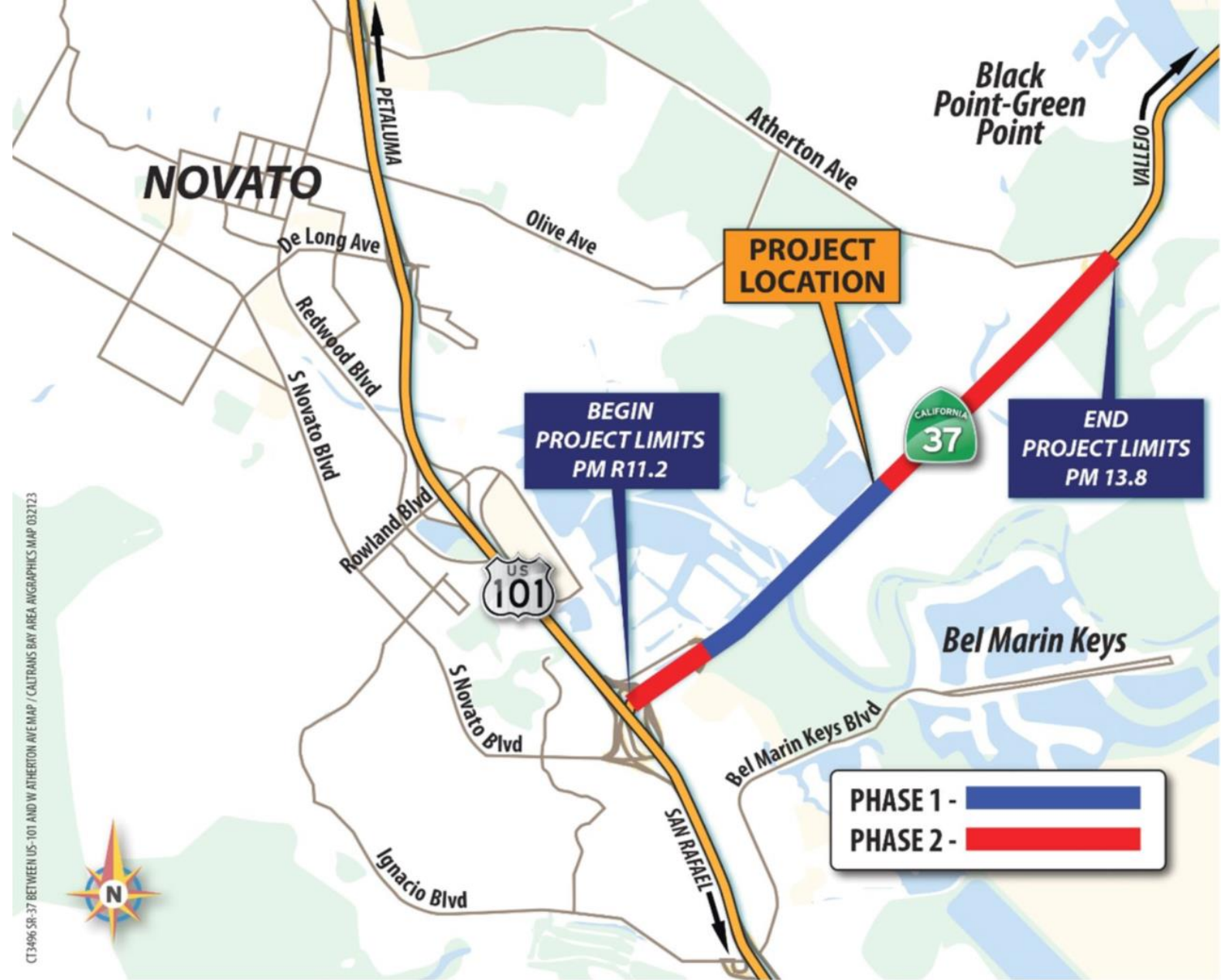
Storm Surge, King Tides, and Sea Level Rise



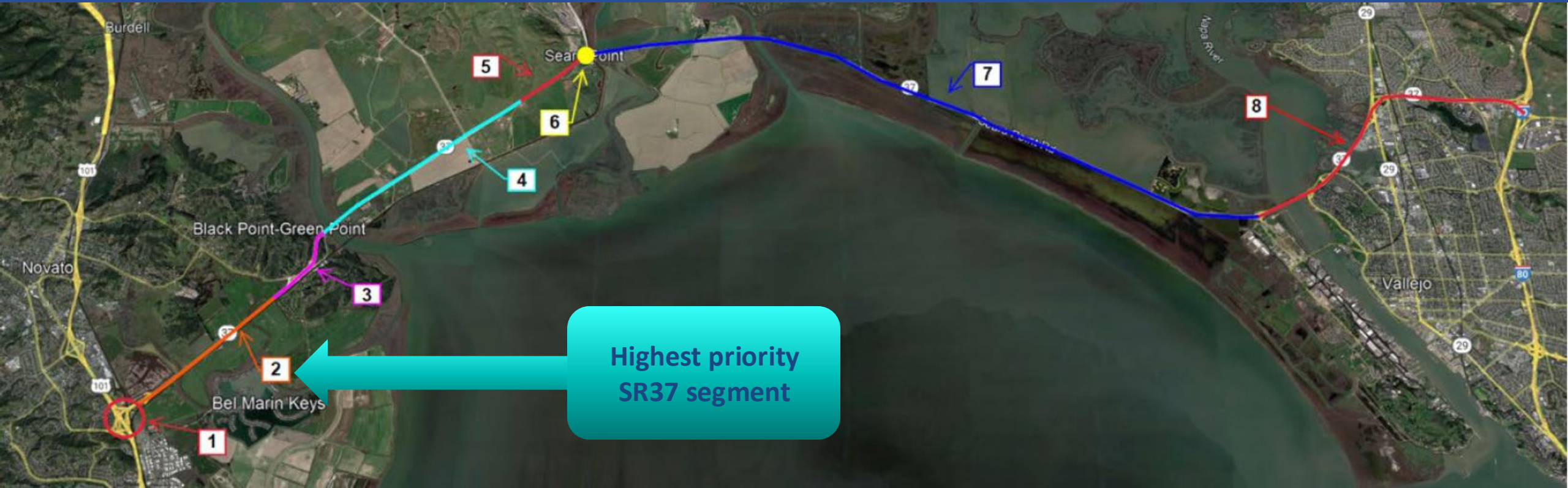
San Francisco
ESTUARY PARTNERSHIP

1st Long-term Project: Flood Reduction, Marin County

- Phase 1: Novato Creek Bridge
 - Target Start of Construction – 2027
- Phase 2: Remainder of Project
 - Target Start of Construction- TBD



Long-term Adaptation Project Prioritization



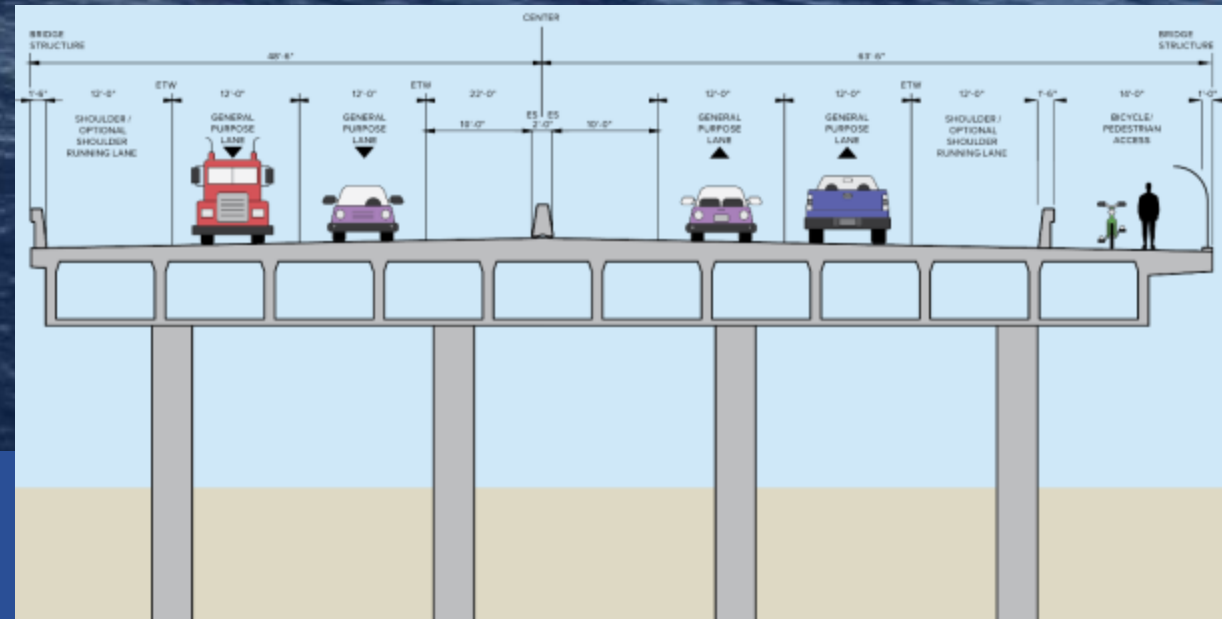


SMART: Sonoma- Marin Area Rail Transit



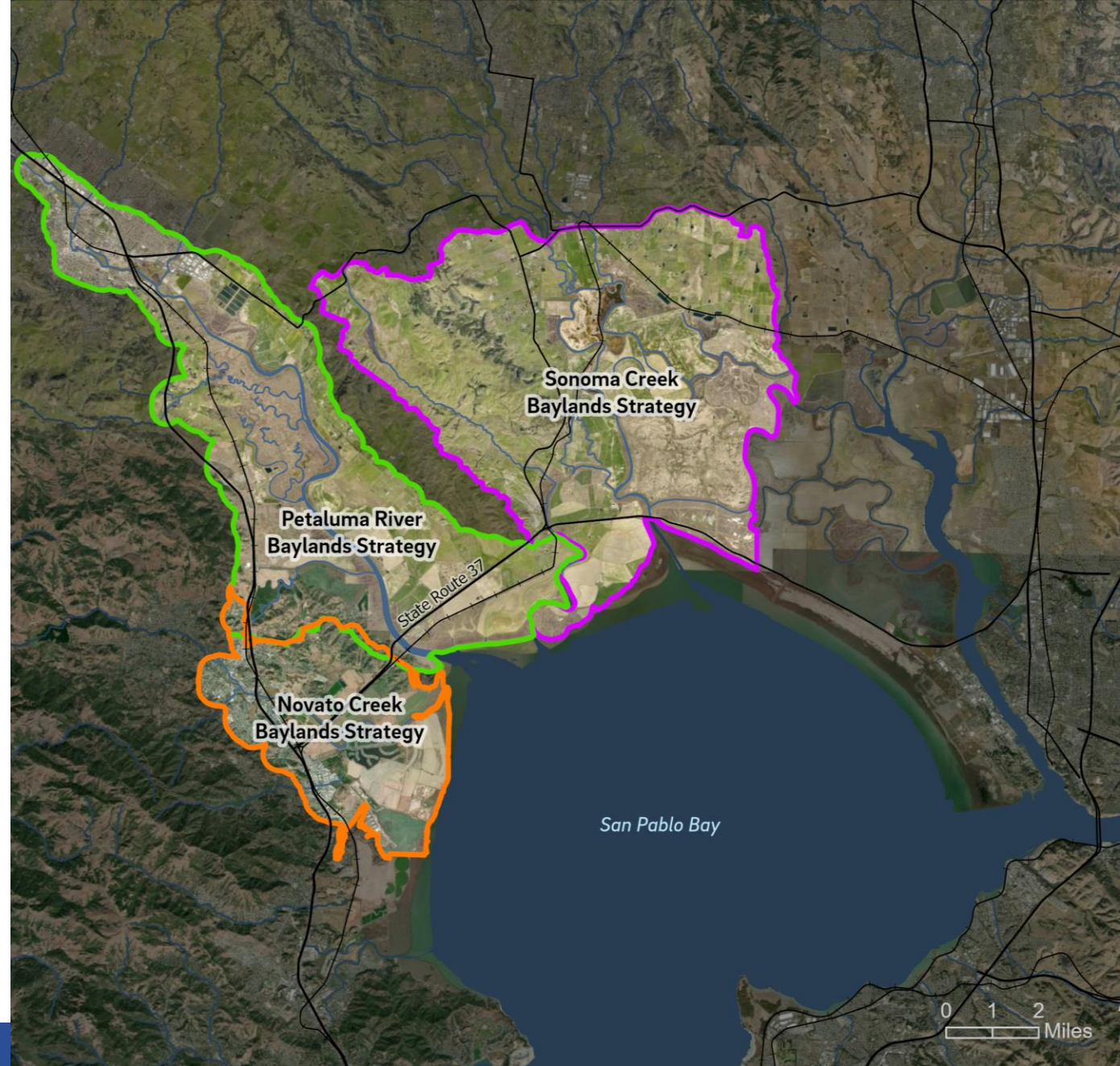
San Francisco
ESTUARY PARTNERSHIP

The Vision: Elevate & Connect



The Novato Creek Baylands Strategy

- **Who:** San Francisco Estuary Partnership, San Francisco Estuary Institute, Marin County, Marin Audubon
- **How:** Bipartisan Infrastructure Law



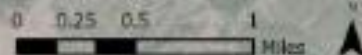
Novato Baylands: The time is now

- SR37
- SMART
- Novato Sanitary District



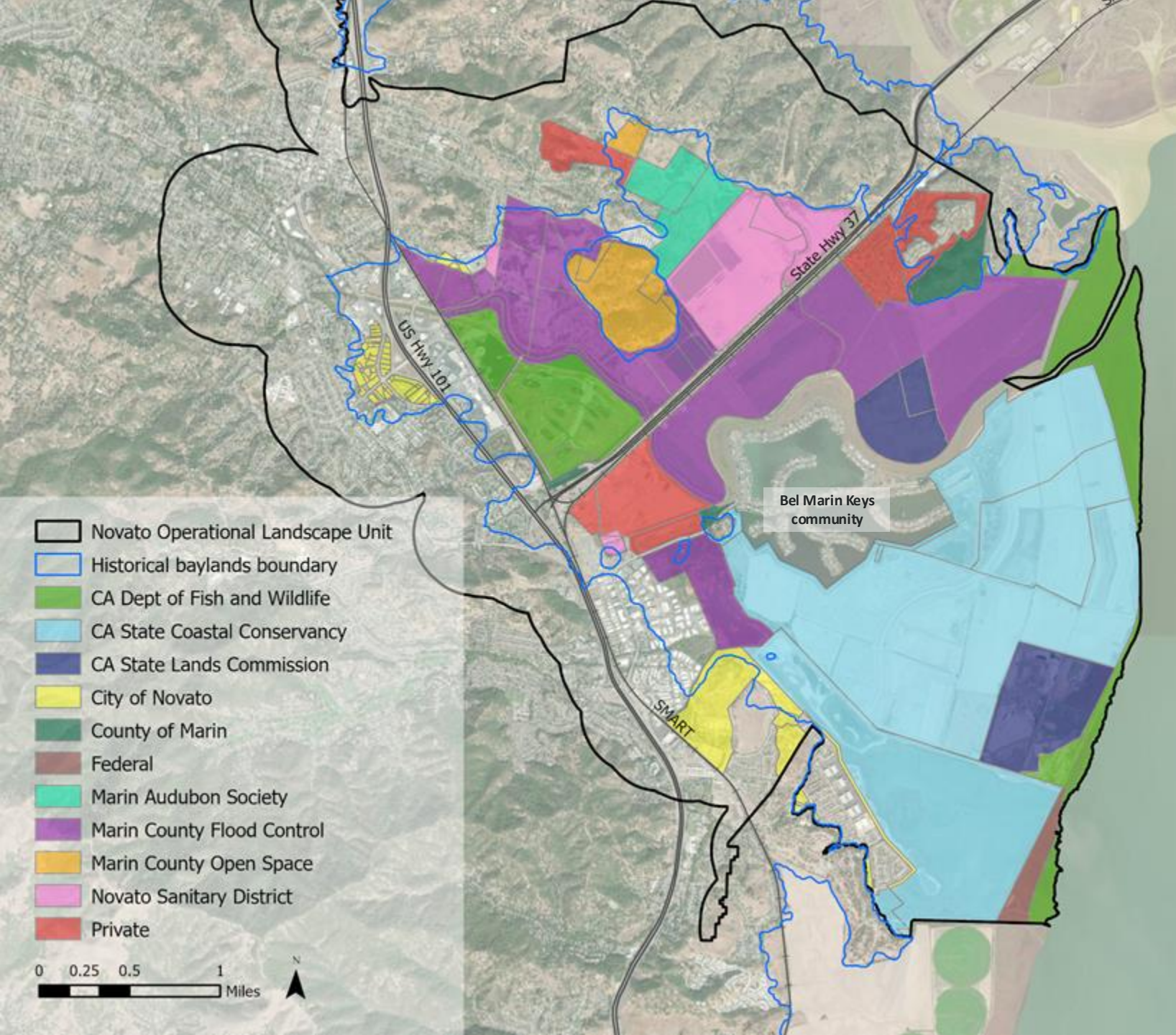
San Francisco
ESTUARY PARTNERSHIP

Novato Operational Landscape Unit

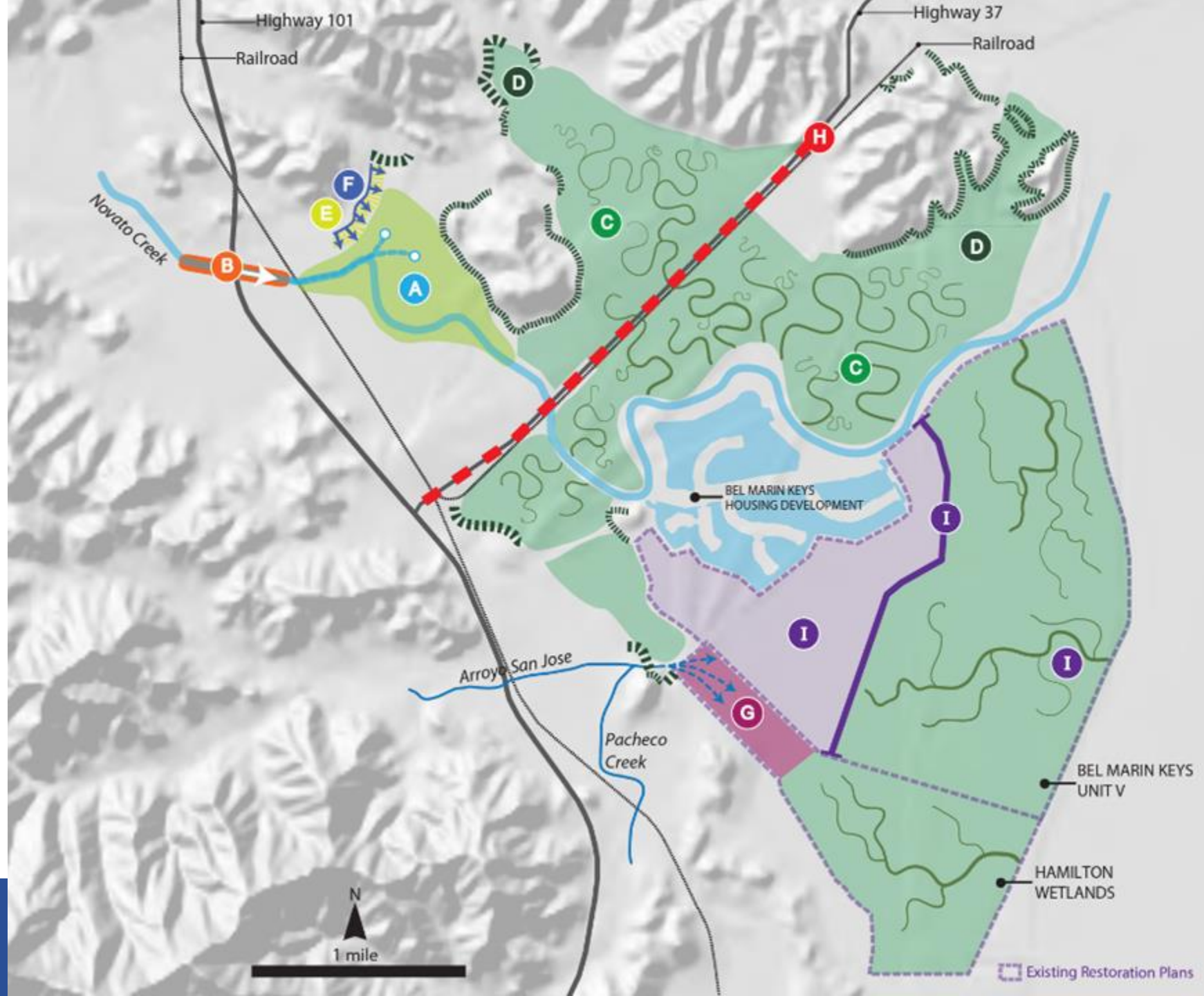


Public Ownership of Novato Baylands

- Many large parcels in public ownership
- Red polygons are privately owned

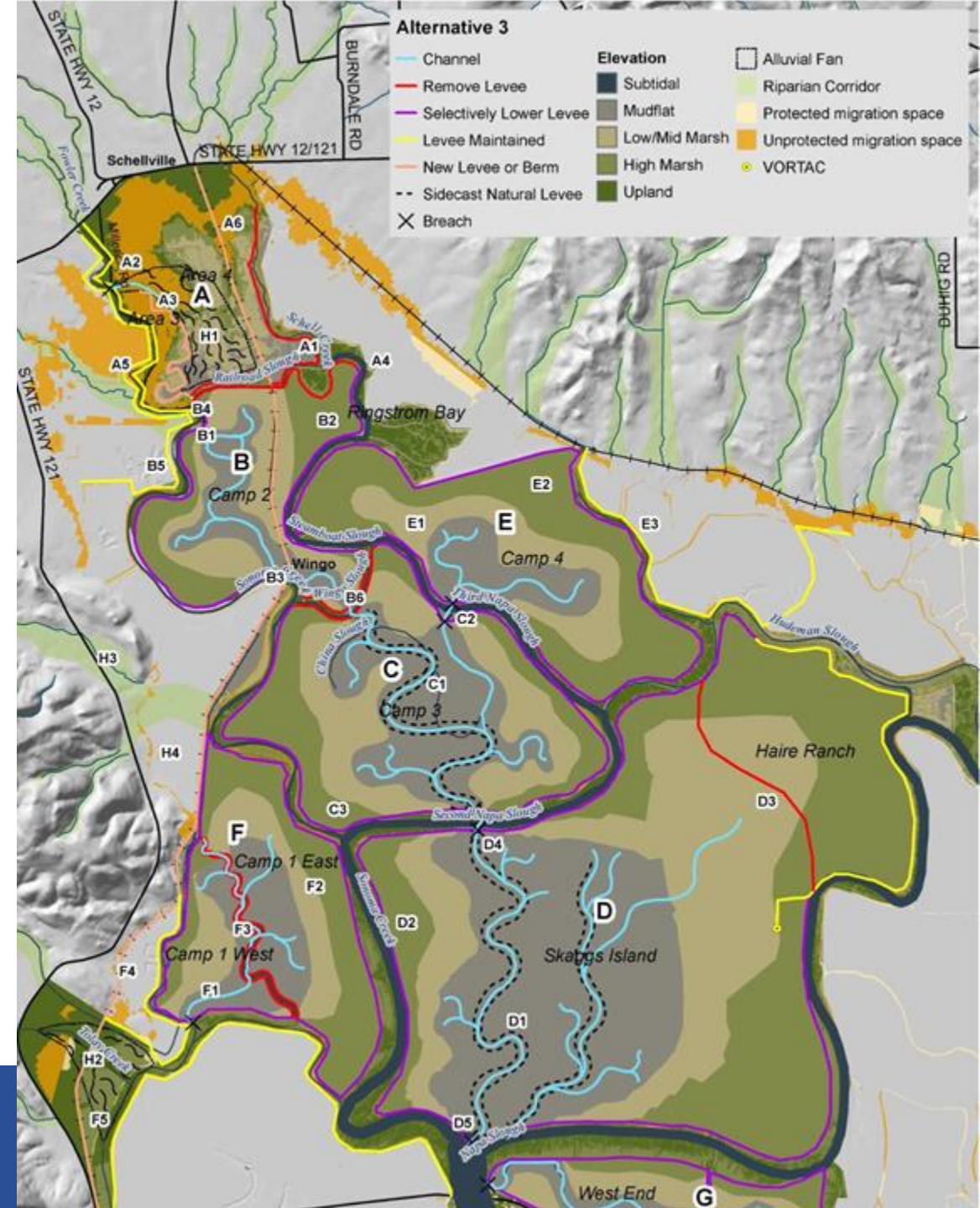


2015: Novato Creek Baylands Vision



San Francisco
ESTUARY PARTNERSHIP

2020: Sonoma Creek Baylands Strategy



One strategy, multiple projects

First phase (2025): develop a coordinated strategy and identify subprojects.

Report may include sections such as:

- Landscape vision
- Implementation timeline
- Hydrologic modeling
- Cultural resources
- Feasibility analysis and cost estimates of restoration alternatives

Second phase: design and permit 4-5 projects on individual parcels.



Thank You



San Francisco
ESTUARY PARTNERSHIP

James Muller

Principal Program Manager

James.muller@sfestuary.org

sfestuary.org



**METROPOLITAN
TRANSPORTATION
COMMISSION**

Jeanette Weisman

SR 37 Program Manager

jweisman@bayareametro.gov

Resilient37.org



San Francisco
ESTUARY PARTNERSHIP