




**Farther Together:
The Opportunity of New Federal and State
Resources to Re-Think How We Fund Resilience**

Our Mission

A photograph of the Golden Gate Bridge in San Francisco, California. The bridge's iconic red-orange towers and suspension cables are visible against a clear blue sky with scattered white clouds. The bridge spans across a body of water, with rolling green hills in the background.

It is our mission to transform public health practice for the purpose of eliminating health inequities using a broad spectrum of approaches that create healthy communities.

Our Power



The coalition of the Bay Area's
public health departments



200+ strong community network

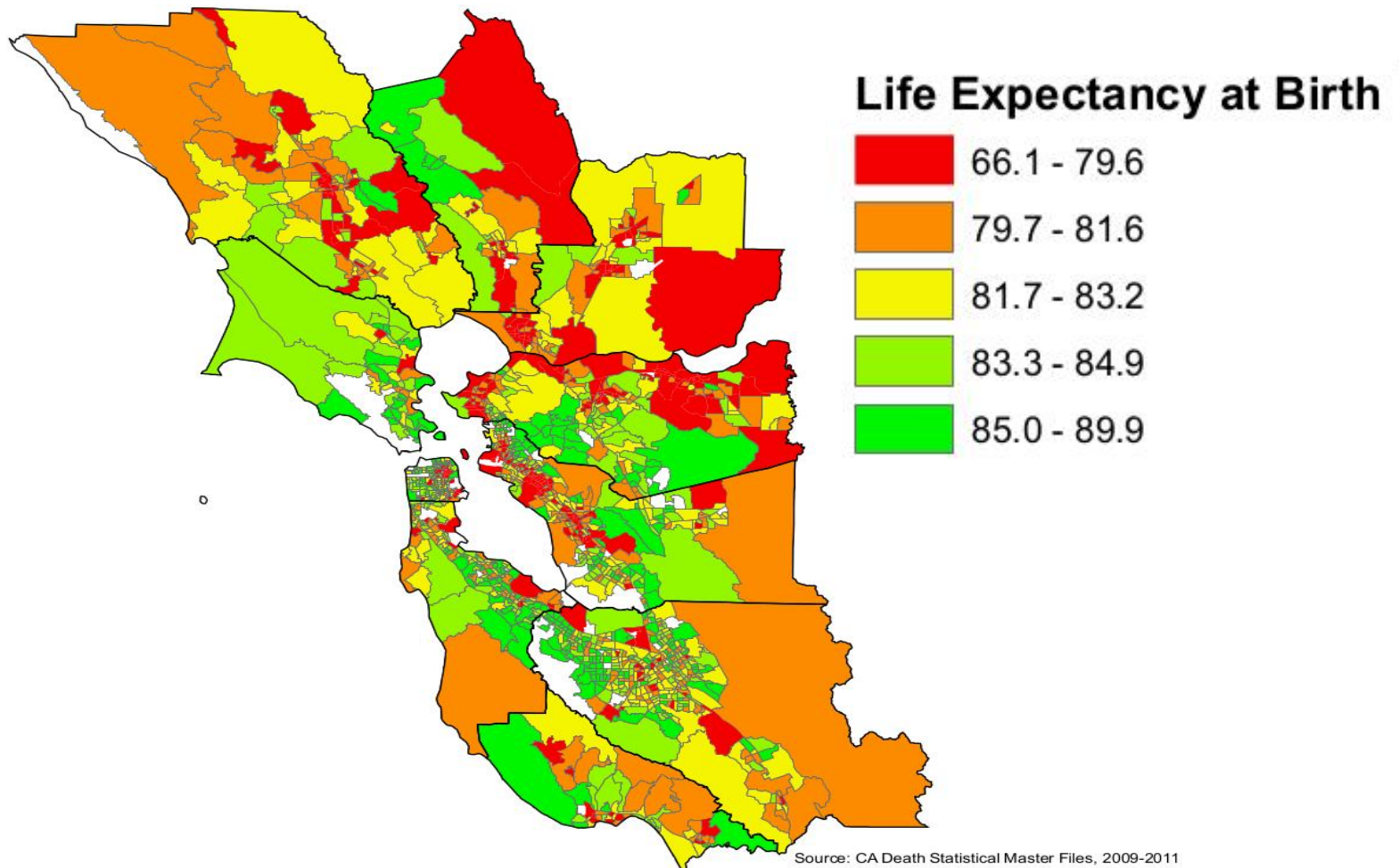


Health Equity. Economic Opportunity. Racial Justice.

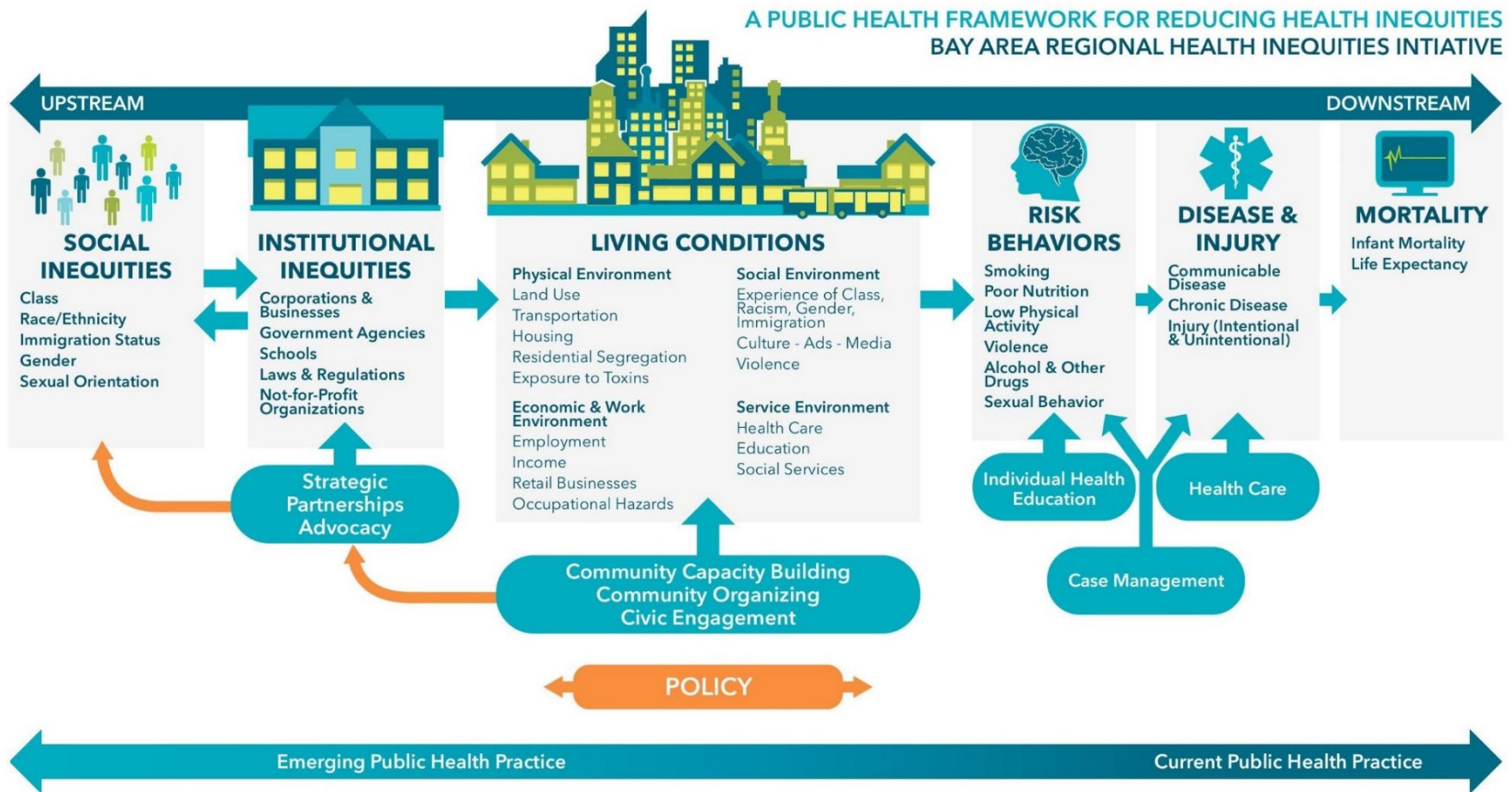
Our Region



Our Region: We Can Do Better



Our Framework: From Project Specific to Equity As Practice



Our Framework: Focusing Our Interventions



FARTHER TOGETHER:

SEVEN BEST PRACTICES FOR ENGAGING COMMUNITIES
TO CREATE A HEALTHY, RESILIENT REGION FOR ALL



Our Launching Point

Piloting Community Engagement in Adapting to Rising Tides

Community Planning for a New Climate



CBO Perspectives



“If you want an inclusive process, you need to include funding in your budget for local community groups to collaborate with you. Please value our expertise, our local relationships, and our time. Don’t hire consultants and then ask us to do the work for free.”

– Roxana Franco, Nuestra Casa

Seven Best Practices at a Glance:

These Aren't New Ideas....But, we should use this moment to institutionalize them.

1. **Budget Wisely for Effective Community Engagement**
2. **Expand Engagement through Interagency Partnerships**
3. **Co-Design Your Process with Community**
4. **Make Engagement Activities Accessible and Relevant for All**
5. **Identify Locally Meaningful Vulnerabilities and Assets**
6. **Prioritize Community-Supported Resilience Actions**
7. **Collaborate to Bring Equitable Solutions to Fruition**

+ Recommendations for Policymakers

1. Budget Wisely for Effective Community Engagement

- ❖ **Make engagement a budget priority**
- ❖ **Contract with CBOs**
- ❖ **Make contracting easy**
- ❖ **Diversify your engagement partners**
- ❖ **Hire and train agency staff**

Recommendations in Action:

- ❖ The City of Oakland used an RFP process to select an equity facilitation team to support community engagement for the [Oakland Equitable Climate Action Plan](#).
- ❖ The Metropolitan Transportation Commission (MTC) has multi-year contracts with several CBOs for community engagement to support the development of [Plan Bay Area](#).

Applying Practices 2 and 3 In This Moment

Expand Engagement through Interagency Partnerships

Who is advising your funding decisions?

- ❖ Share responsibilities
- ❖ Create an advisory committee
- ❖ Include a health perspective

Co-Design Your Process with Community

- ❖ Make a plan
- ❖ Understand the context
- ❖ Leverage related efforts
- ❖ Build climate capacity
- ❖ Step back and observe
- ❖ Plan to adapt

4. Make Engagement Activities Accessible and Relevant for All

- ❖ Employ a “no wrong door” approach
- ❖ Create accessible materials
- ❖ Eliminate common barriers to participation
- ❖ Speak the language
- ❖ Offer many ways to engage

Recommendations in Action:

- ❖ Nuestra Casa, a CBO in East Palo Alto, developed an environmental justice parent academy to teach residents about the impacts of climate change on their livelihoods and gather feedback to inform [resilience planning for the western approach of the Dumbarton Bridge](#).

Applying Practices 5 and 6 In This Moment

Identify Locally Meaningful Vulnerabilities and Assets

Who is fundable?

- ❖ Use empowering inquiry methods
- ❖ Consider health
- ❖ Highlight inequities and determine how to fund those closest to the work

Prioritize Community-Supported Resilience Actions

What is funded?

- ❖ Seek out community-driven solutions and coalitions
- ❖ Adopt inclusive evaluation criteria
- ❖ Integrate input from engagement activities
- ❖ Make decisions together

7. Collaborate to Bring Equitable Solutions to Fruition

- ❖ Engage in implementation
- ❖ Keep communicating
- ❖ Reflect and revise



Recommendations in Action:

- ❖ Alameda County contracted with Resources for Community Development (RCD), a local affordable housing and community development non-profit, to help implement its [Heat Preparedness Program](#).

Recommendations for Policymakers



Build the funding pipeline

- New revenue
- Conditioning existing resources



Create enduring infrastructure

- Agency vision, goals, budgets
- Agency staffing structures, work plans
- CBO funding, contracting, TA



Mandate robust community engagement

- Identifying issues & communities, engagement methods, accountability
- Public processes and project applicants

Thank You!

Contacts:

Melissa Jones

MJones@barhii.org

(707) 628-3324