

# WHERE THE WETLANDS MEET THE FLATLANDS

**BUILDING INNOVATIVE REGIONAL-COMMUNITY  
PARTNERSHIPS FOR GREEN INFRASTRUCTURE AND  
ENVIRONMENTAL JUSTICE**

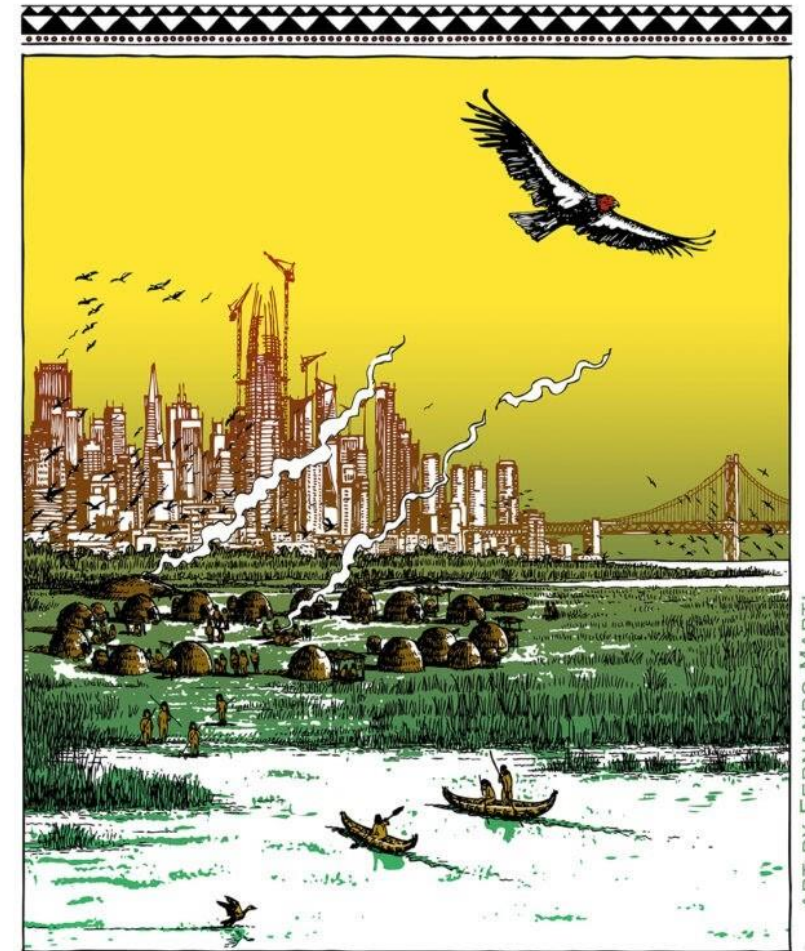


BAY AREA  
AIR QUALITY  
MANAGEMENT  
DISTRICT

David Ralston, Senior Policy Advisor, Planning and Climate Protection Division  
Bay Area Air Quality Management District, Oct. 1, 2021

# PEOPLE AND LAND ACKNOWLEDGMENT

- In honor and respects to our ancestors named and un-named and all of us who share the commons of this amazing Earth
- In recognition of the Ohlone of the Bay Area (and the Huichin/Chochenyno Peoples of the East Bay)



ART BY: FERNANDO MARTI

## ON INDIGENOUS LAND

### SOGOREA TE LAND TRUST

SOGOREA TE LAND TRUST IS AN URBAN INDIGENOUS WOMEN LED COMMUNITY ORGANIZATION WORKING TO RETURN LAND BACK TO INDIGENOUS STEWARDSHIP.

[WWW.SOGOREATE-LANDTRUST.COM](http://WWW.SOGOREATE-LANDTRUST.COM)

# INTRO – COLLABORATIVE PLANNING FOR GREEN INFRASTRUCTURE & SUSTAINABLE COMMUNITIES

## Water and air



1. **Budget** Wisely for Effective Community Engagement



2. **Expand** Engagement through Interagency Partnerships



3. **Co-Design** Your Process with Community



4. **Make** Engagement Activities Accessible and Relevant for All



5. **Identify** Locally Meaningful Vulnerabilities and Assets



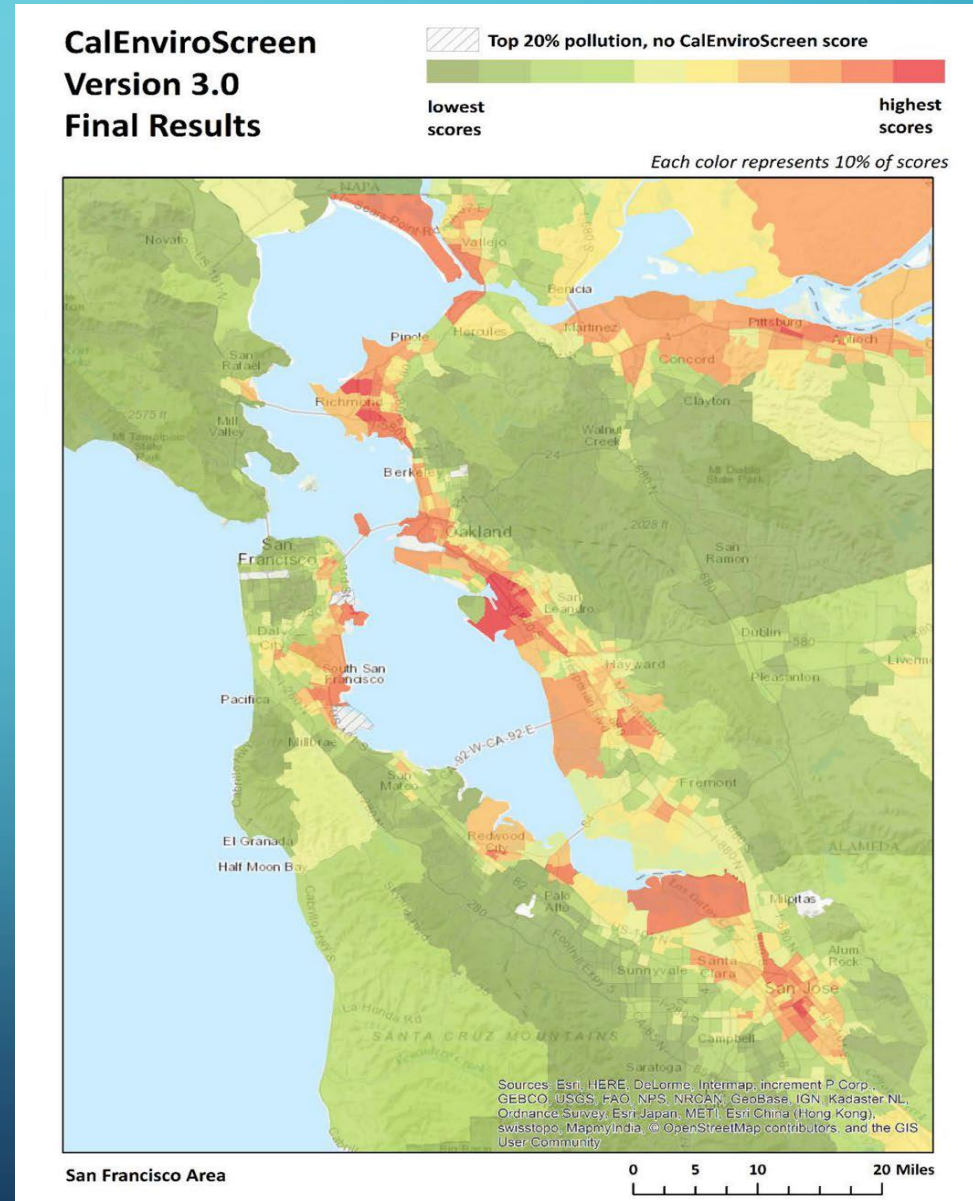
6. **Prioritize** Community-Supported Resilience Actions



7. **Collaborate** to Bring Equitable Solutions to Fruition



# REGIONAL PERSPECTIVES: RESILIENCY AND ENVIRONMENTAL JUSTICE



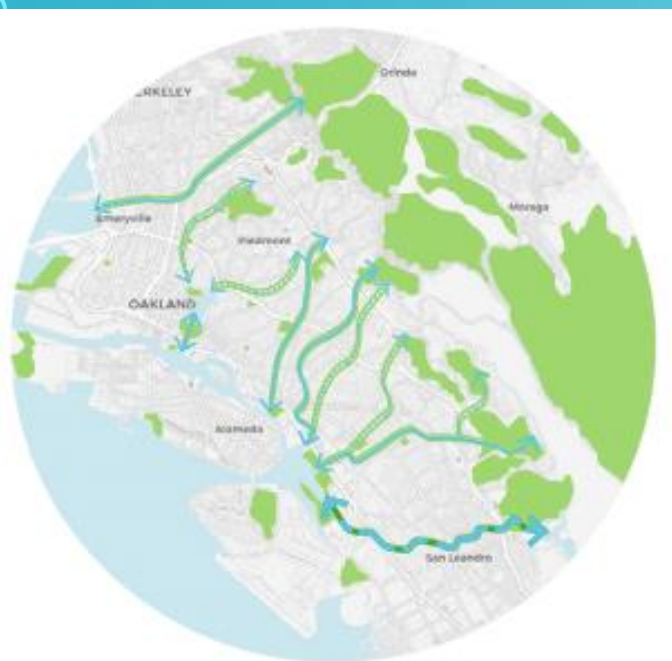
# CONTEXT: THE ESTUARY COMMONS/ EAST OAKLAND

Estuary Commons (Alameda County) — Bay Area:  
Resilient By Design Challenge (resilientbayarea.org)

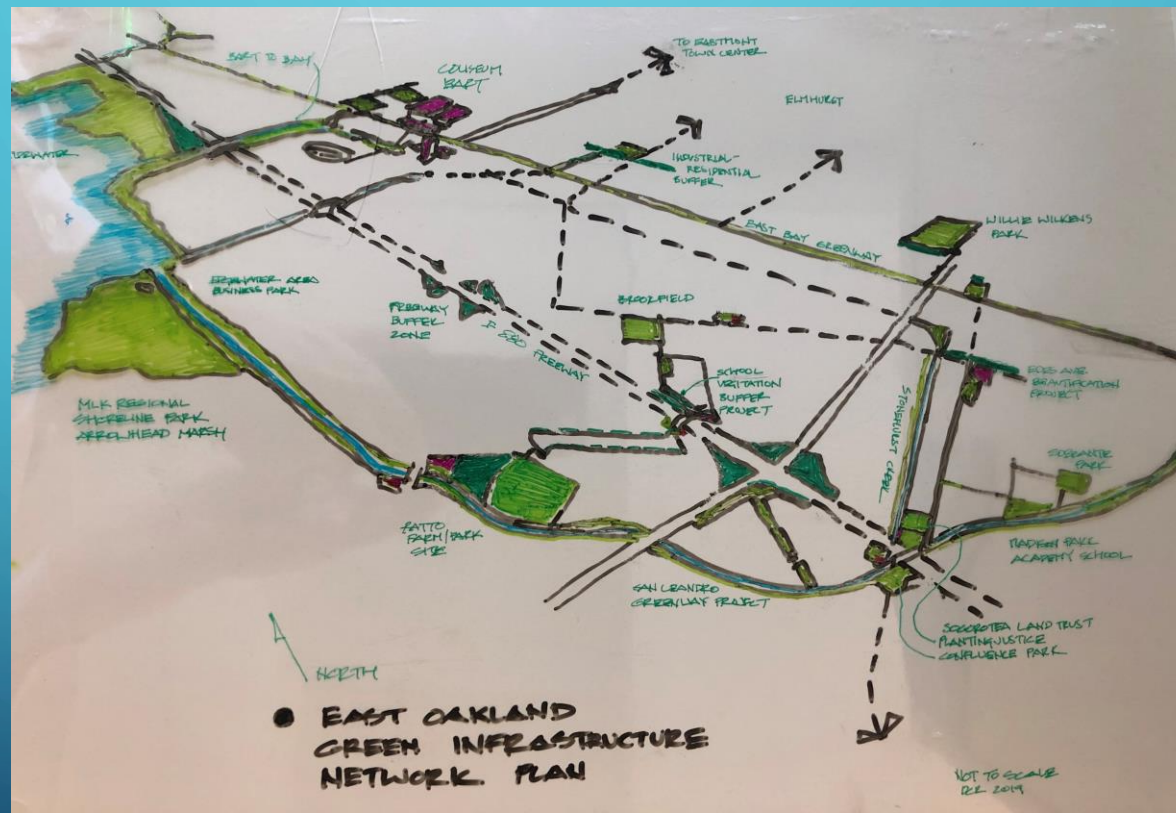


The East Oakland I-880 corridor - from High St. to 98<sup>h</sup> Ave. - contains the worst-off (CES 3.0) disadvantaged communities in Bay Area with severe air pollution issues.

# CONNECTING TO COMMUNITY NEEDS & ASSETS RE-STITCHING THE URBAN FABRIC VIA BLUE-GREEN INFRASTRUCTURE



Future blue-green infrastructure



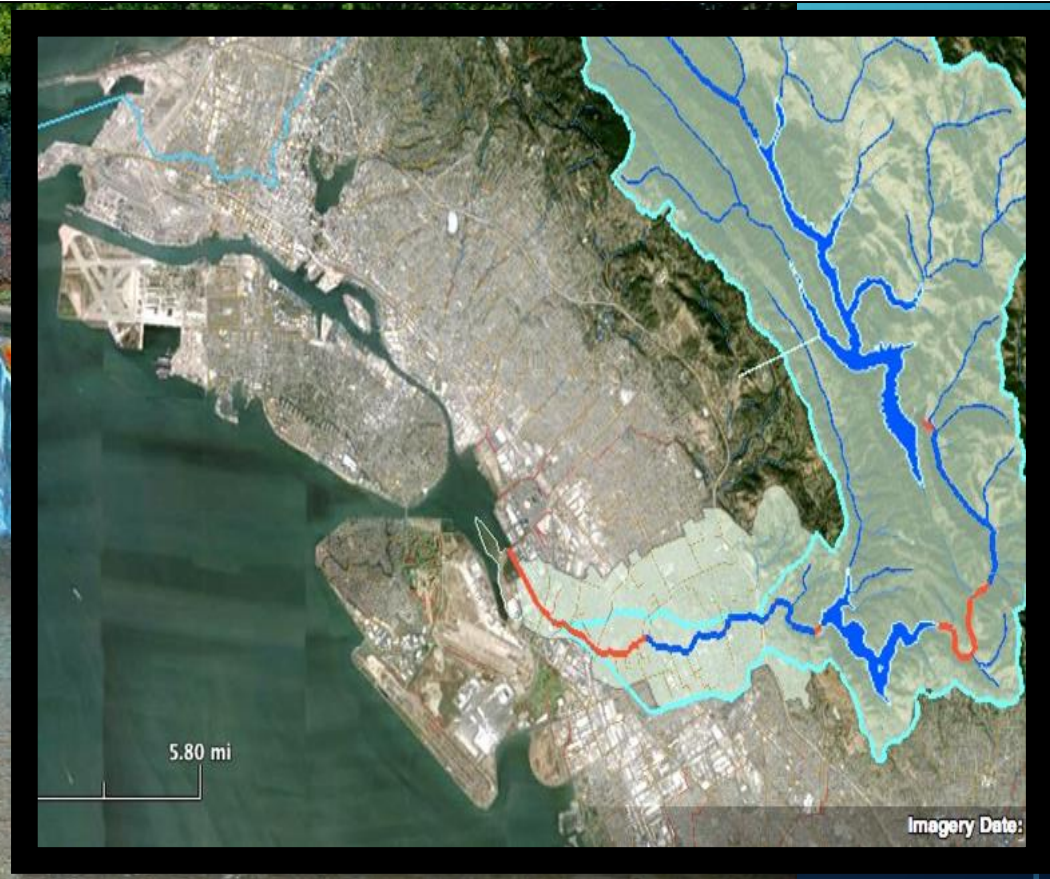
Green Infrastructure Connections as envisioned through the East Oakland Neighborhoods Initiative, 2018-2019.

# THREE GREEN INFRASTRUCTURE TYPOLOGIES – ON-GOING PARTNERSHIP PROJECTS

- **RECLAIMING UTILITY INFRASTRUCTURE FOR PUBLIC USE - RIPARIAN GREENWAYS – BLUE-GREEN CONNECTORS & UNDER-CROSSINGS**
- **ADAPTIVE REDESIGN AND RETROFIT OF GREY INFRASTRUCTURE FOR ECOLOGICAL (INCLUDING HUMAN) HEALTH**
- **RE-STITCHING THE URBAN FABRIC SEVERED BY FREEWAYS - LAND BRIDGES TO WATERFRONT/ESTUARY**

# SAN LEANDRO/LISJAN CREEK GREENWAY

To most a path, to us a sanctuary.

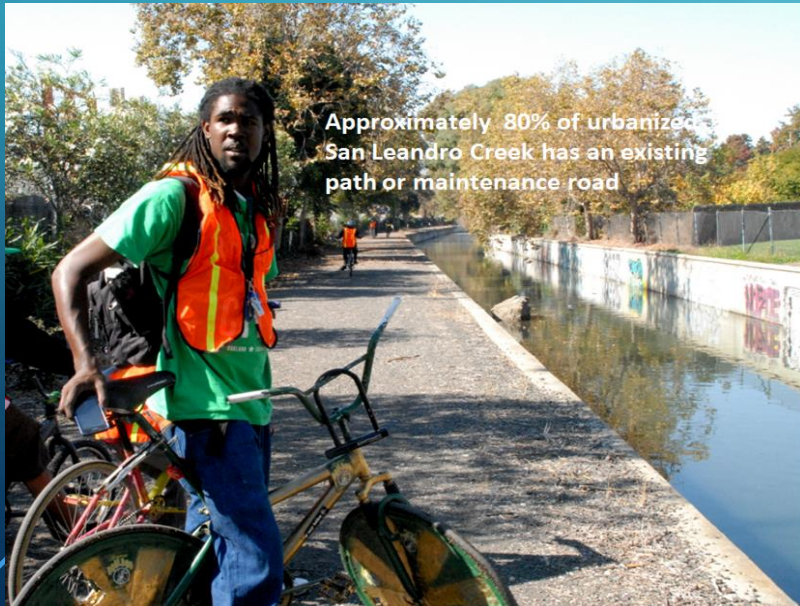


Greenway Phase 1 Trail

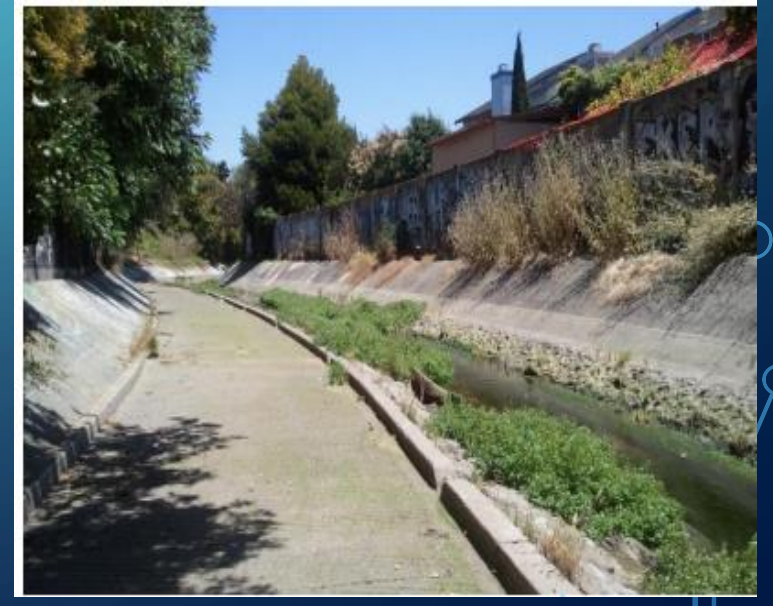
Just to go into creeks helps shape a person



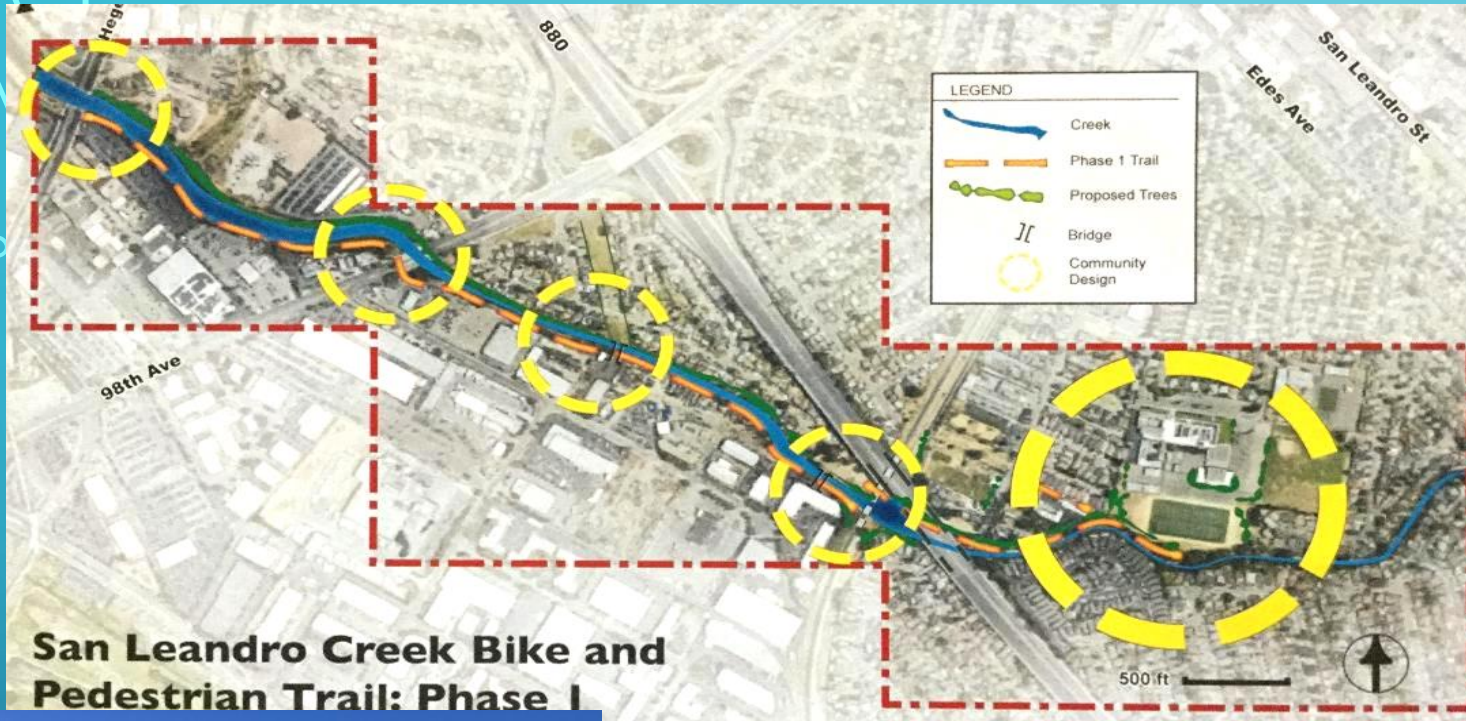
# RE-DISCOVERING THE SAN LEANDRO (LISJAN) CREEK



Approximately 80% of urbanized San Leandro Creek has an existing path or maintenance road



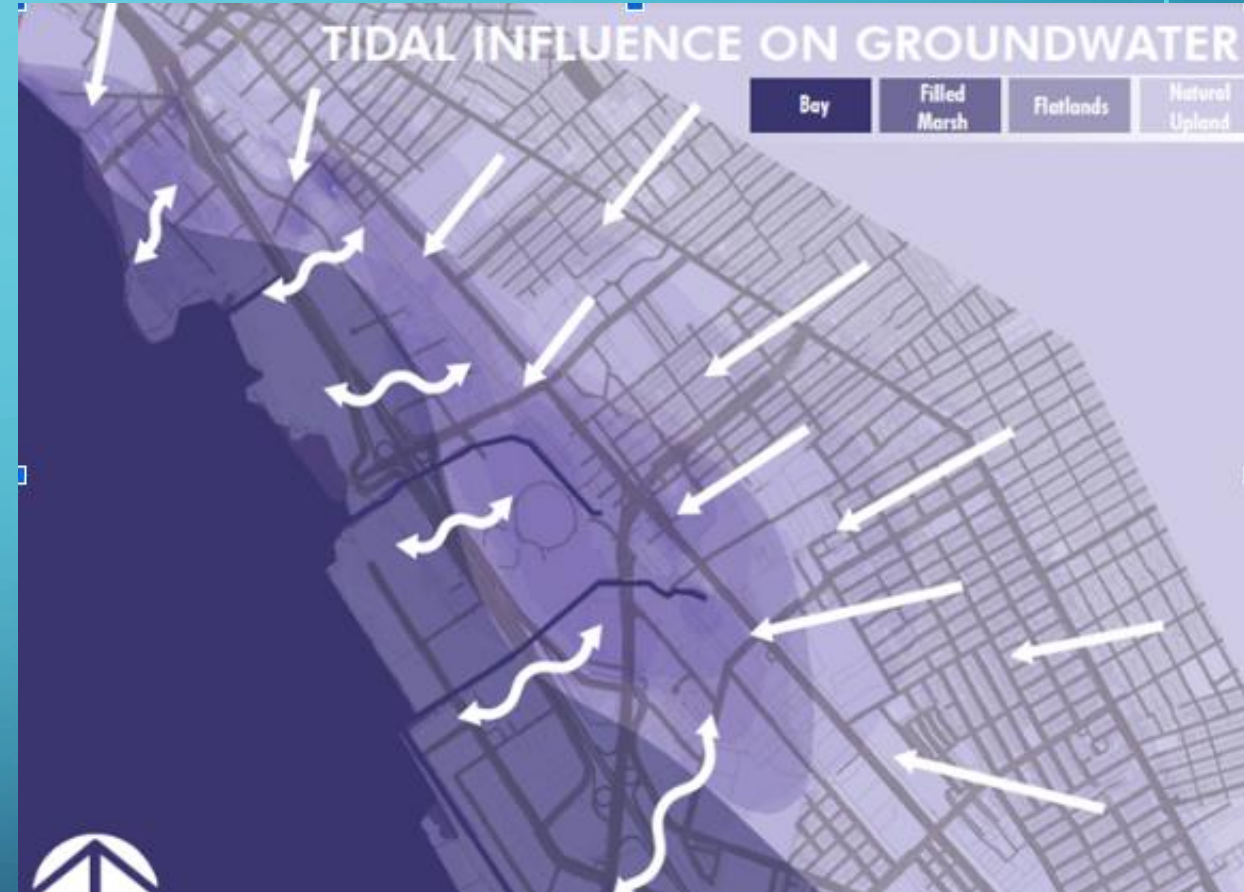
# CONFLICTING PLANS?



- Proposed New Station and Potential Station Area
- Potential Station Considered and Eliminated
- Existing Station
- Station where CC Service to be Discontinued
- BART Station
- Railroad
- Proposed Capitol Corridor (CC) Service

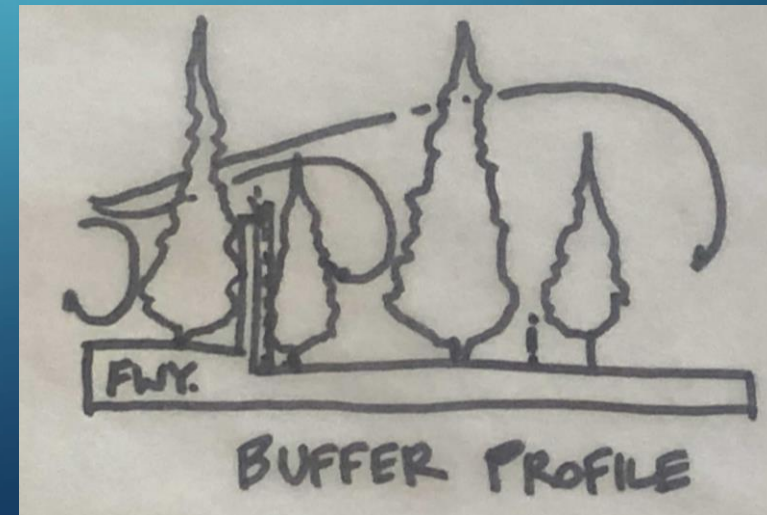


# COLUMBIA GARDENS/BROOKFIELD SCHOOL/ GROUNDWATER AND STORMWATER MANAGEMENT

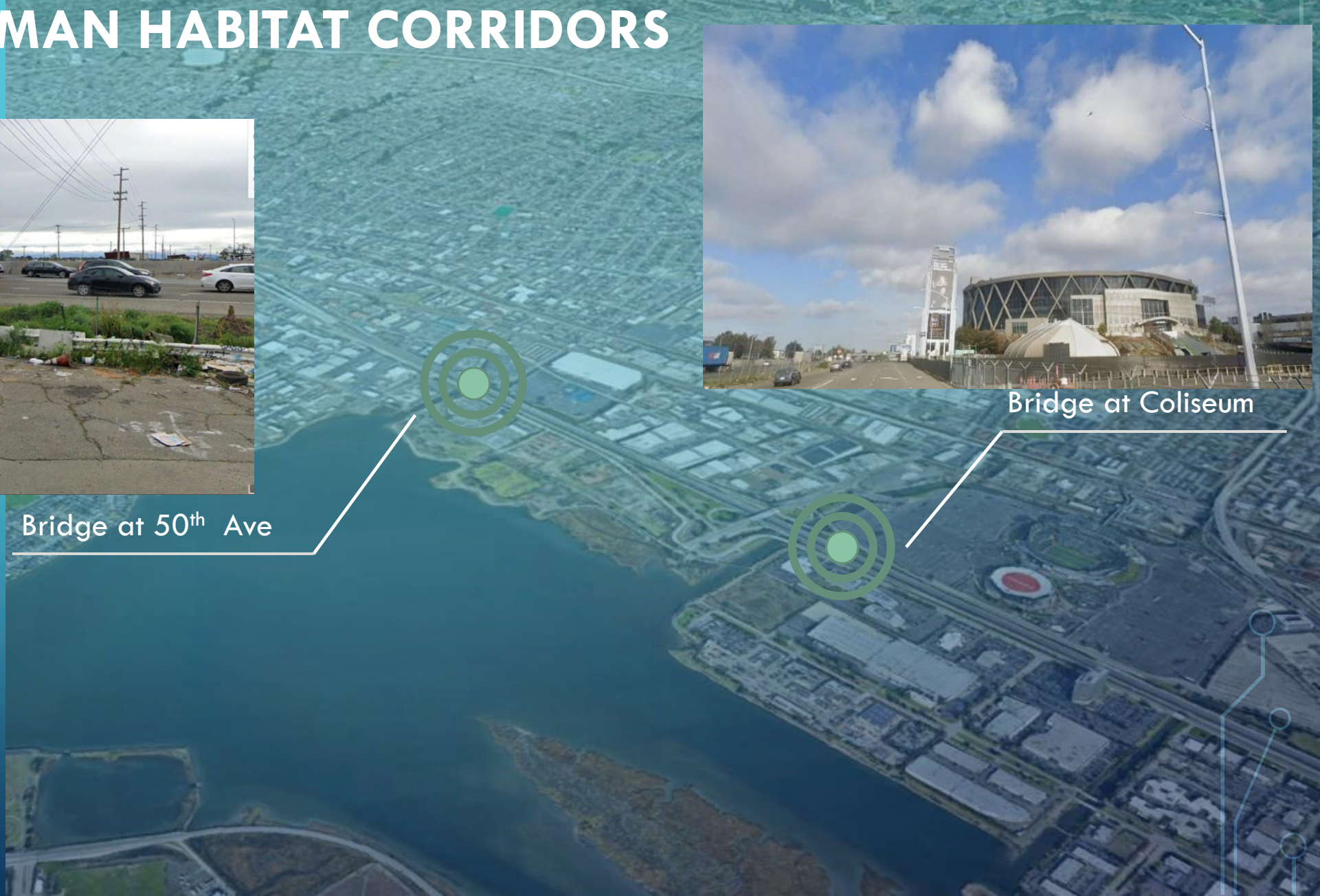


The groundwater mapping work which was furthered through the RBD process (with ABC team member Kris May) has been published in the journal *Water*, ["A Rapid Assessment Method to Identify Potential Groundwater Flooding Hotspots as Sea Levels Rise in Coastal Cities."](#)

# VEGETATIVE BUFFER AS ADAPTIVE GREEN & RESTORATIVE INFRASTRUCTURE



# CONNECTING THE WETLANDS - FREEWAY LAND BRIDGE AS HUMAN HABITAT CORRIDORS



Bridge at Coliseum

Bridge at 50<sup>th</sup> Ave

# Freeway Crossing Access and Needs

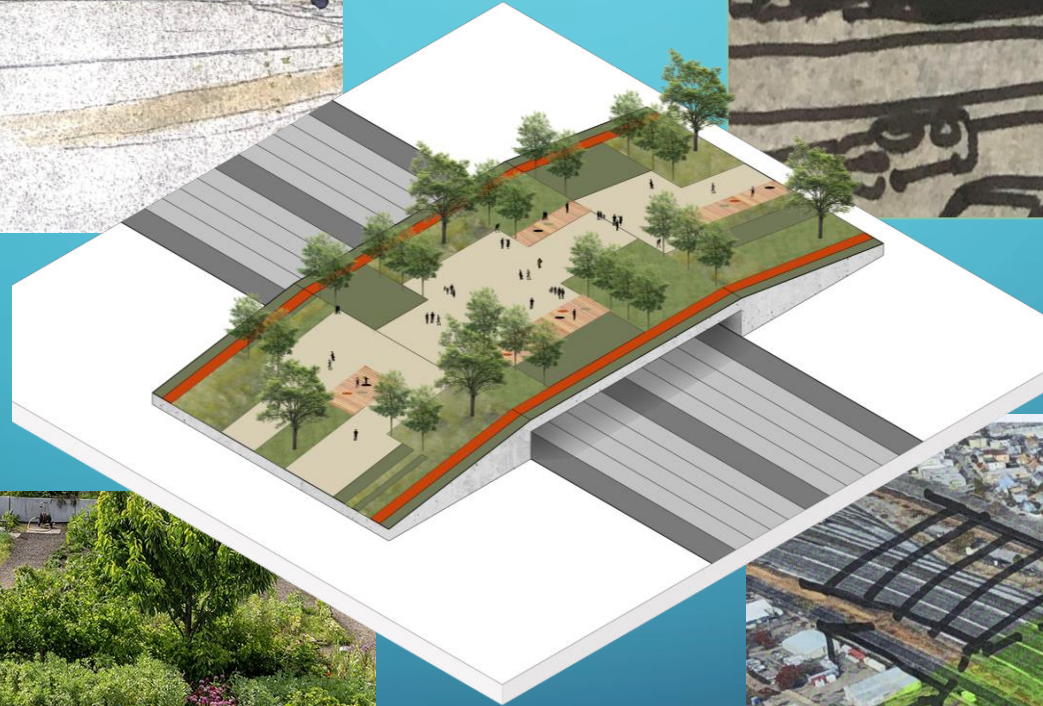
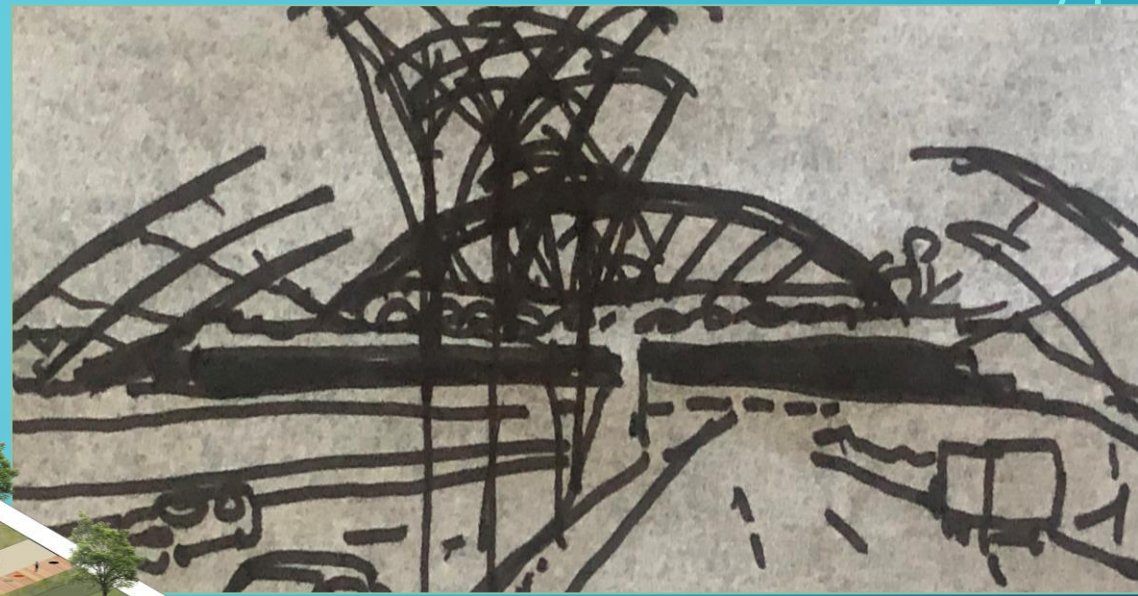
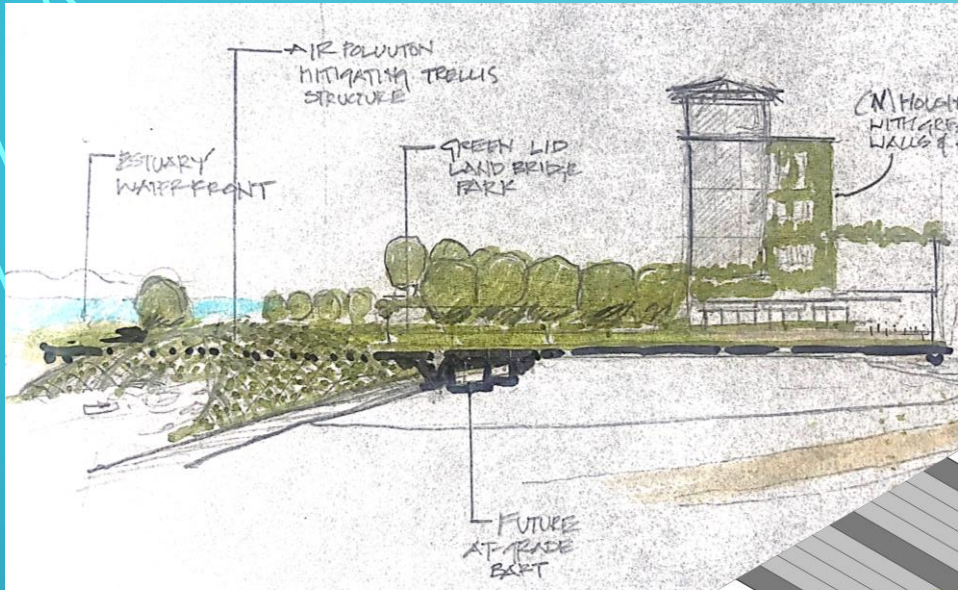


## I-880 Freeway

-  Proposed Green Freeway Crossing Lids
-  Key waterfront/Bay Trail resource destinations
-  Ex. Crossings adequate in safety for ped/bikes (w/ some upgrades)
-  Ex. Crossings severely inadequate to unviable for safe ped/bike access
-  Gap of safe and walkable access to waterfront Destinations, ~1 mi.

Coliseum City-Edgewater Crossing

Proposed Oakland Greenway Network Paths



# LOOKING FORWARD: INFRASTRUCTURE AND STEWARDSHIP A CONFLUENCE OF OPPORTUNITIES



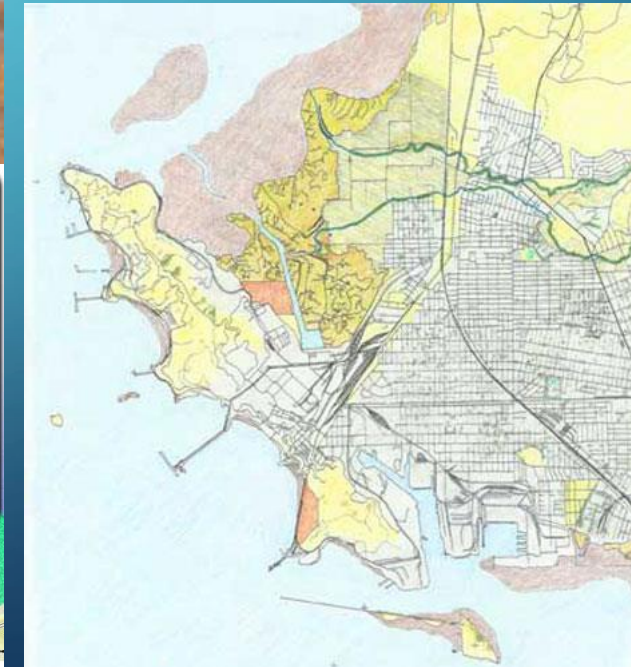
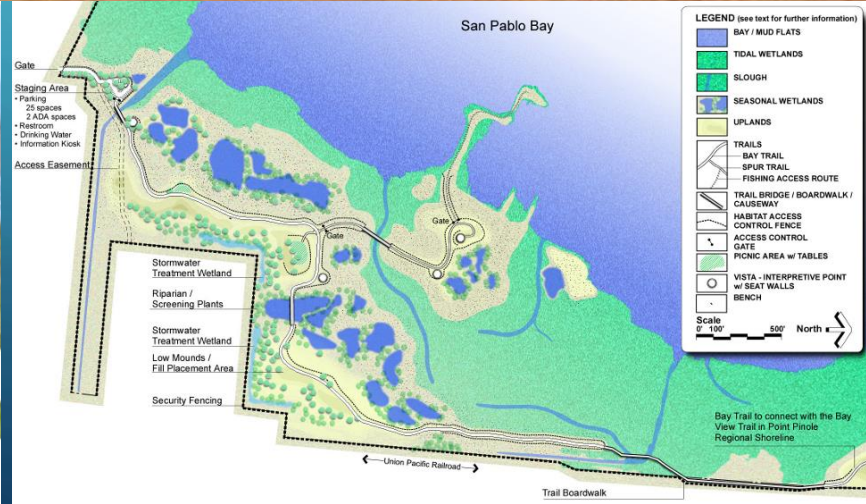
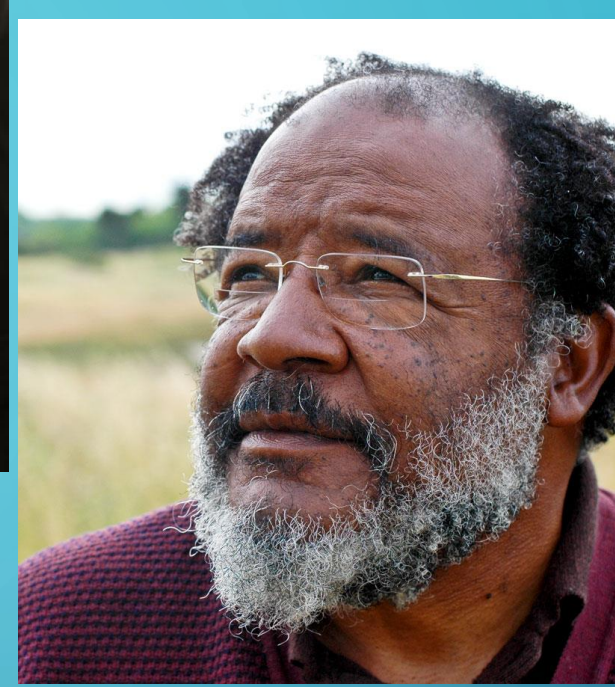
And Moss!

10,000 times the  
power of an Oak!

1 sq. foot of moss  
sequester as much  
as 3.75 oak trees!

Removes dust particles and  
CO2 levels.





EAST BAY REGIONAL PARK DISTRICT



**Thank You!... \*Special thanks to all our community partners:**  
**Brower-Dellums Institute for Sustainable Policy Studies/Action; Merritt**  
**College Students, East Oakland Collective, Higher Ground, Urban ReLeaf,**  
**100k Trees for Humanity, Planting Justice, and Sogorea Te land Trust**