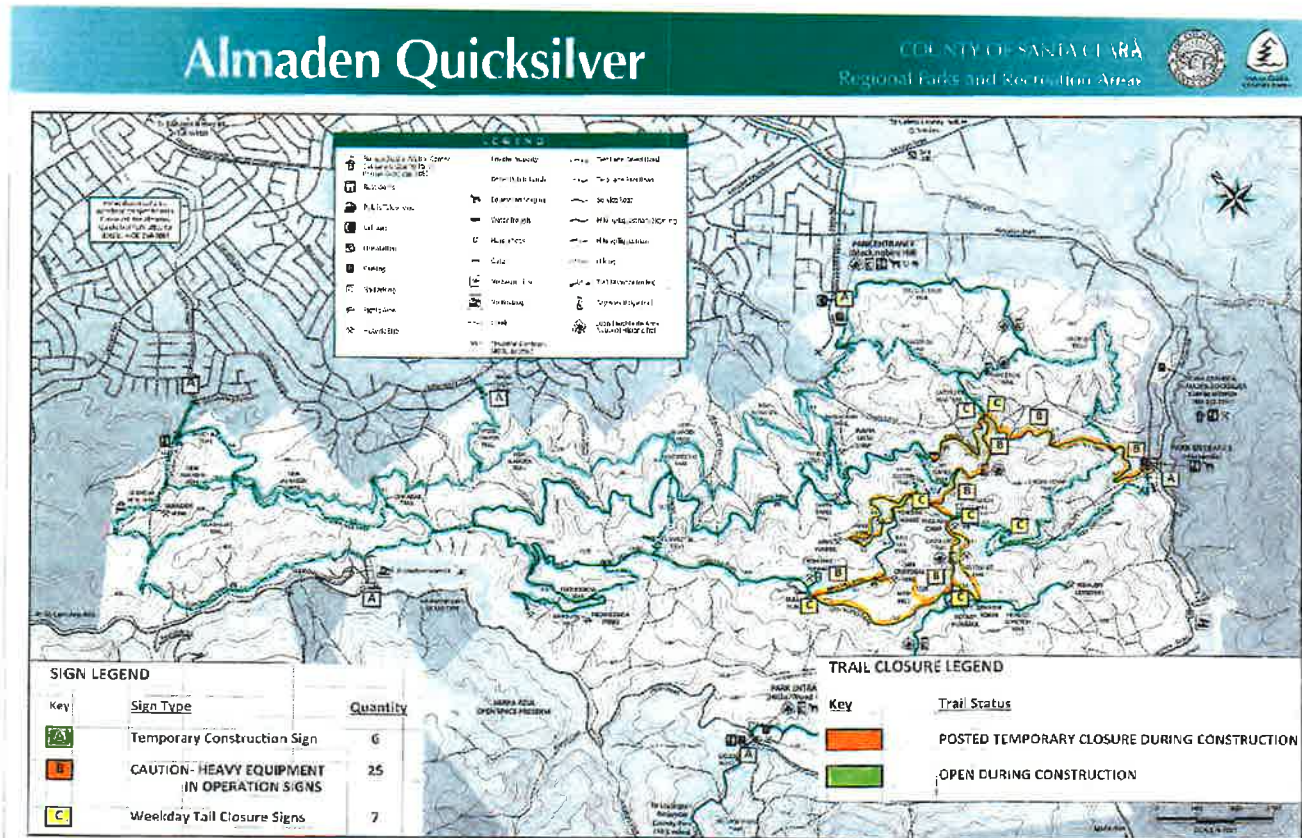


Almaden Quicksilver County Park

- Hacienda Entrance to Quicksilver County Park – Clockwise from lower left: Service Vehicle Entry, construction trailer, Daily Instructions, Project Sign



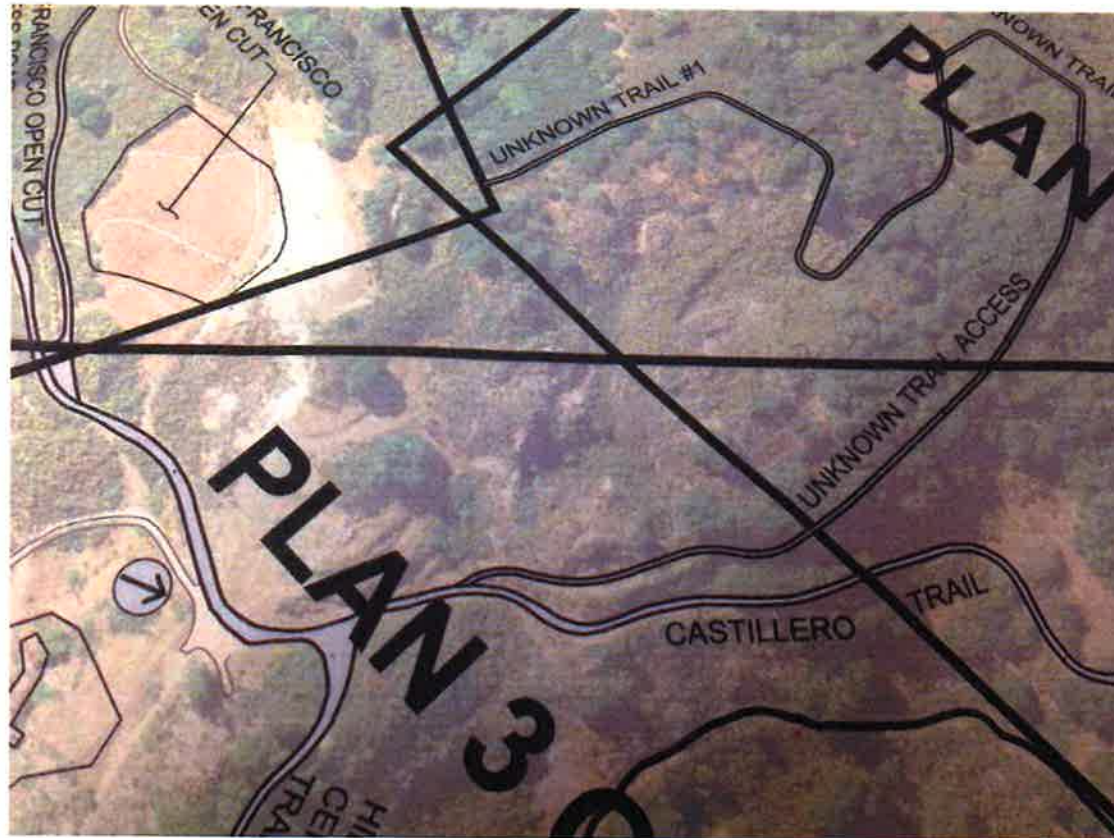
Map of Almaden Quicksilver County Park





Construction Staging, Stockpiles, Cautions

Castillero Trail



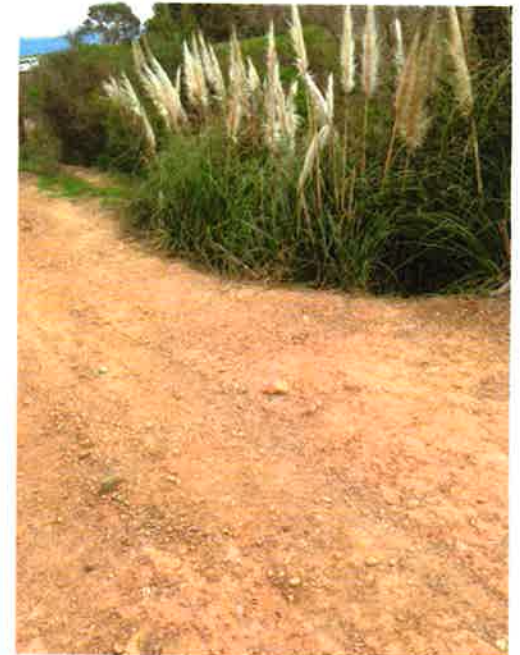


Castillero Trail

Pre-Construction at
Culvert Location

Castillero Trail at Culvert

- Existing Pampas Grass to be removed on each side of trail. Grass and other vegetation blocking the drainage flow to existing culvert





Castillero 36" Culvert
Placement

Castillero Trail 36" Culvert Construction

Installation of Geotextile Fabric
and Rock Slope Protection



Castillero Trail 36" Culvert with Rip Rap

- Installation of culvert, rip rap and connection to concrete V ditch from SFOC





Castillero Trail Excavation



Castillero Trail – Installation of Aggregate Paving



Castillero Trail – Installation of Earthen Ditch

Over 1000 feet of Earthen Ditch was installed towards new 18" culvert on uphill side of trail

Castillero Trail

Existing Headwall for New 18"
Culvert with Earthen V-Ditch



Castillero Trail

- Cleaning of Headwall, adding a 18" CMP culvert and Earthen Drainage Ditch

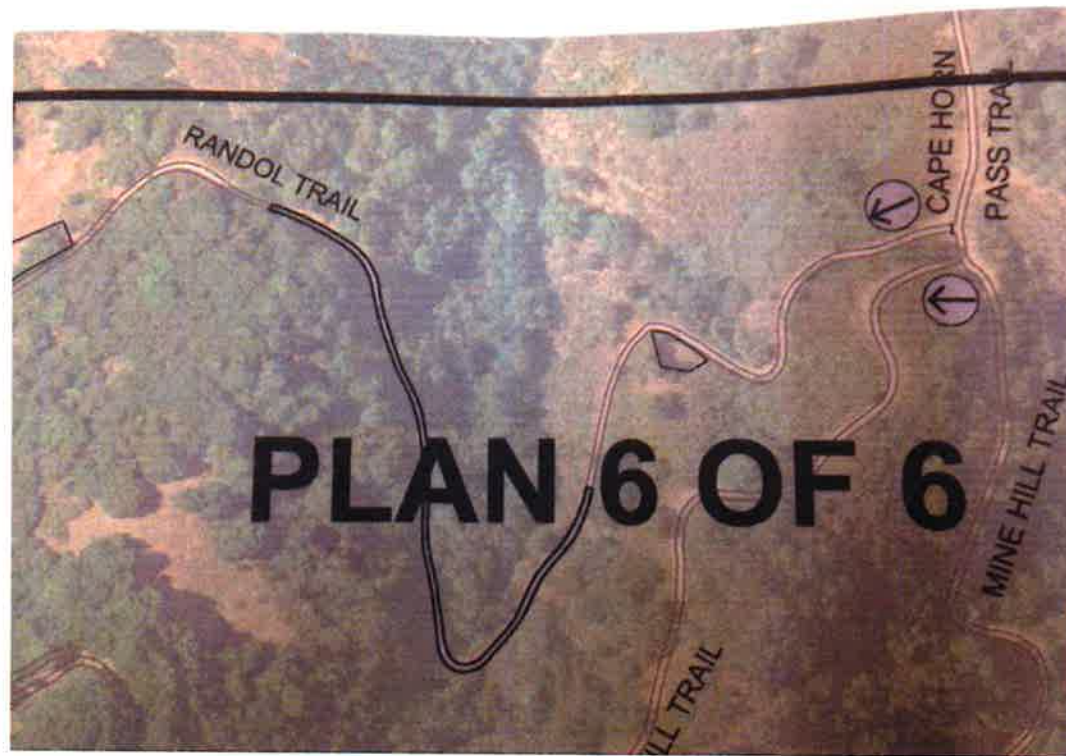


Castillero Trail

Existing Headwall and new 18"
Culvert



Randol Trail



Randol Trail

Existing 18" drainage culvert
prior to calcine removal at
Station 12+00



Randol Trail Culvert

Existing 18" Culvert
Downhill side at 19+25



Randol Trail 36" Culvert

36" culvert under construction
with formation of Earthen
Drainage Ditch



Randol Trail 36" Culvert

Uphill riprap and geotextile
fabric



Randol Trail Construction of Culvert and Trail

Placement of 36" culvert and
riprap on uphill and downhill side
of trail





Randol Trail 36" Culvert

Detail of culvert with Apron



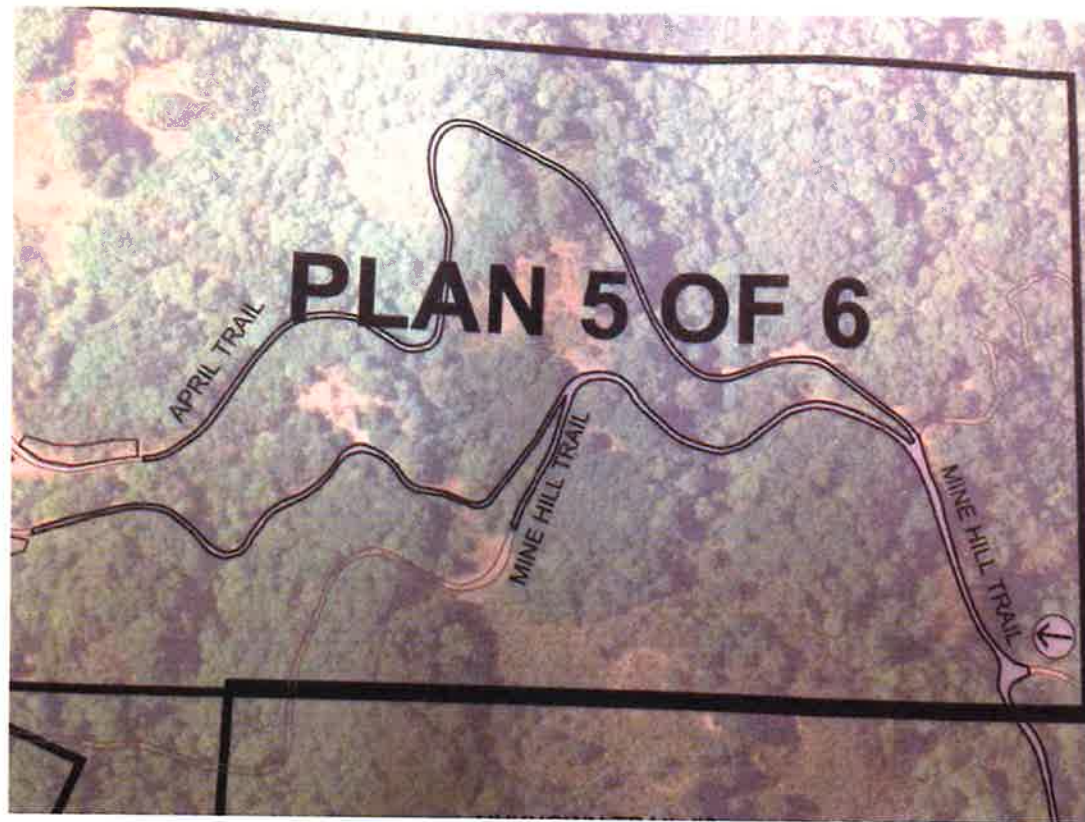
Randol Trail RipRap

Uphill & downhill RipRap from Trail



Randol Trail Paving

April Trail and Lower Mine Hill Trail



April Trail Excavation of Calcines

April Trail under excavation
revealed large boulders and rocks



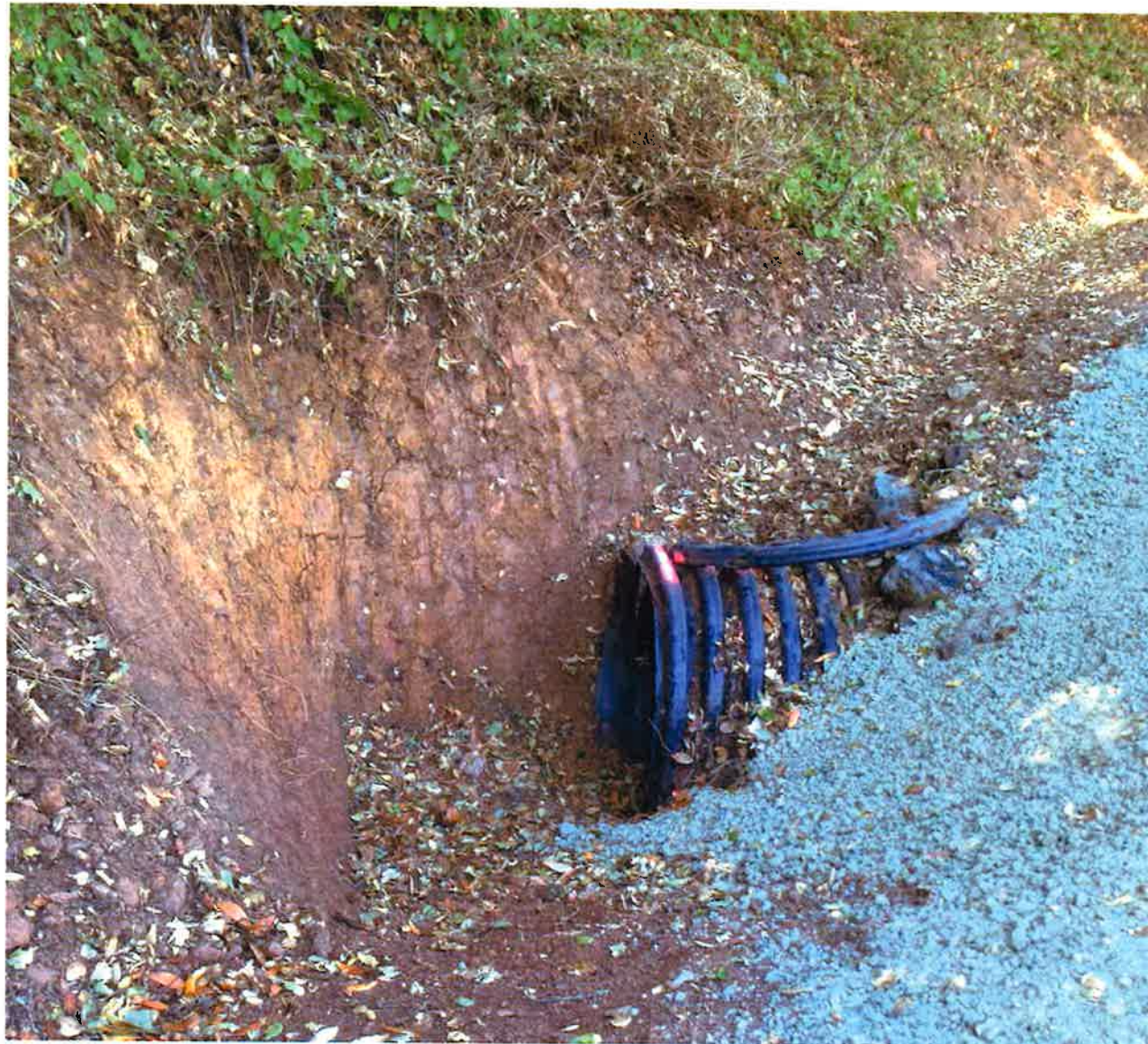


April Trail: Excavation and Blading



April Trail Construction of
Rip Rap at existing culvert

April Trail – Existing
Culvert with new
drainage ditch on uphill
side of trail



April Trail – Armored Rock Crossing 25' x 25'

- Installation included Geotextile fabric, rock slope protection and riprap; 1 ½" drainrock at 18" depth with 6" Class II Aggregate base on top compacted to 95% density





April Trail – Armored Rock Crossing



April Trail – Installation of Aggregate
Paving and Earthen Drainage Ditch

April Trail

- On each Rolling dip (11 in total) on the downhill side of the top of hump...Coyote excrement.



Lower Mine Hill Trail - Excavation

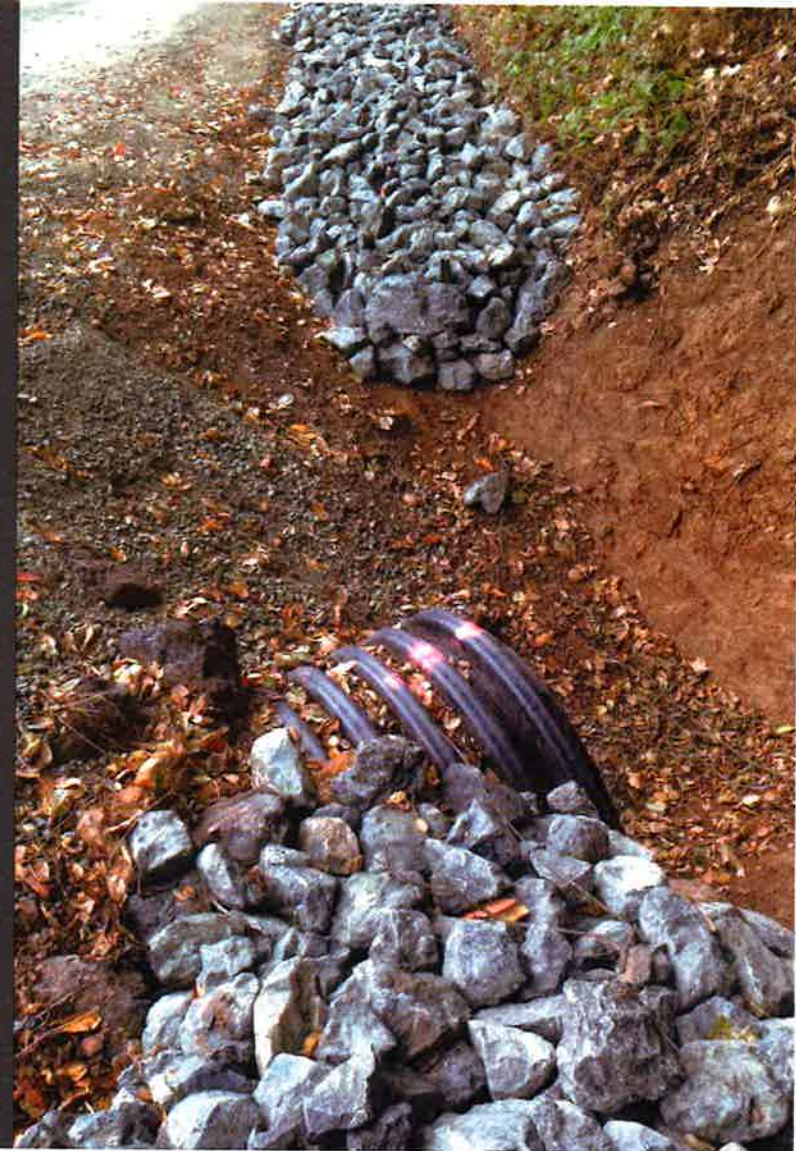




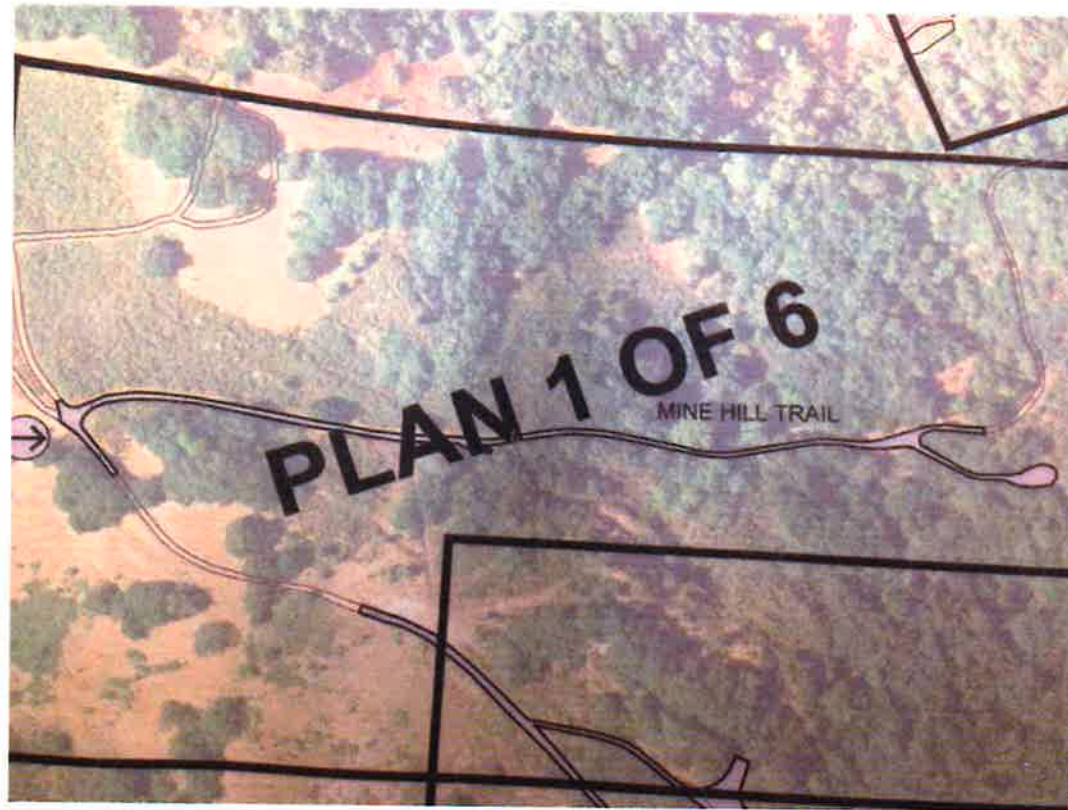
Mine Hill Trail – Excavation and
placement for Rock Lined Drainage
to Existing 36" culvert

Mine Hill/April Trail

Rock Lined V-Ditch from both directions to existing 36" culvert on uphill side of trail



Upper Mine Hill and San Cristobal Trails



Upper Mine Hill & San Cristobal Mine Trail

- Upper Mine Hill Trail included an excess of calcines, deep, with large rocks and boulders beneath - making construction difficult.



Mine Hill at San Cristobal Trail Intersection

Drainage to an existing culvert was required on both sides of the trail. Steep grade from San Cristobal Mine Trail to Mine Hill trail required outslope drainage on the downhill side and a constructed swale on the uphill side leading to the existing 18" culvert.



Yellow Kid Trail





Yellow Kid Trail – Prior to
Excavation



Yellow Kid Trail Excavation

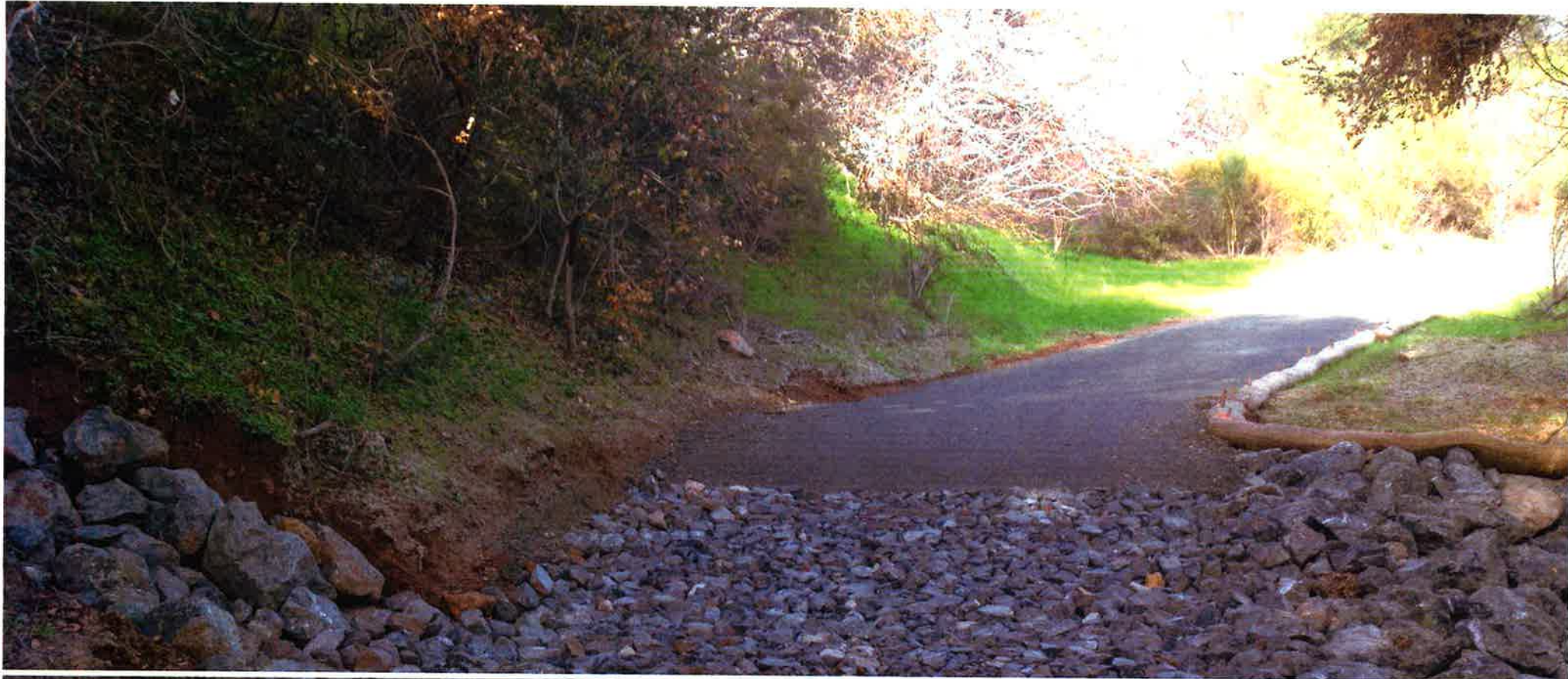
Yellow Kid and Hidalgo Cemetery Trail Excavation

- Clockwise from Top Left:
- 1. Pack Rat Nest
- 2. Excavation at top of Yellow Kid
- 3. Excavation of Hidalgo Cemetery





Yellow Kid Trail – Existing Culvert prior to rip rap installation; 20' x 20' x 5'
depth rip rap downslope of trail



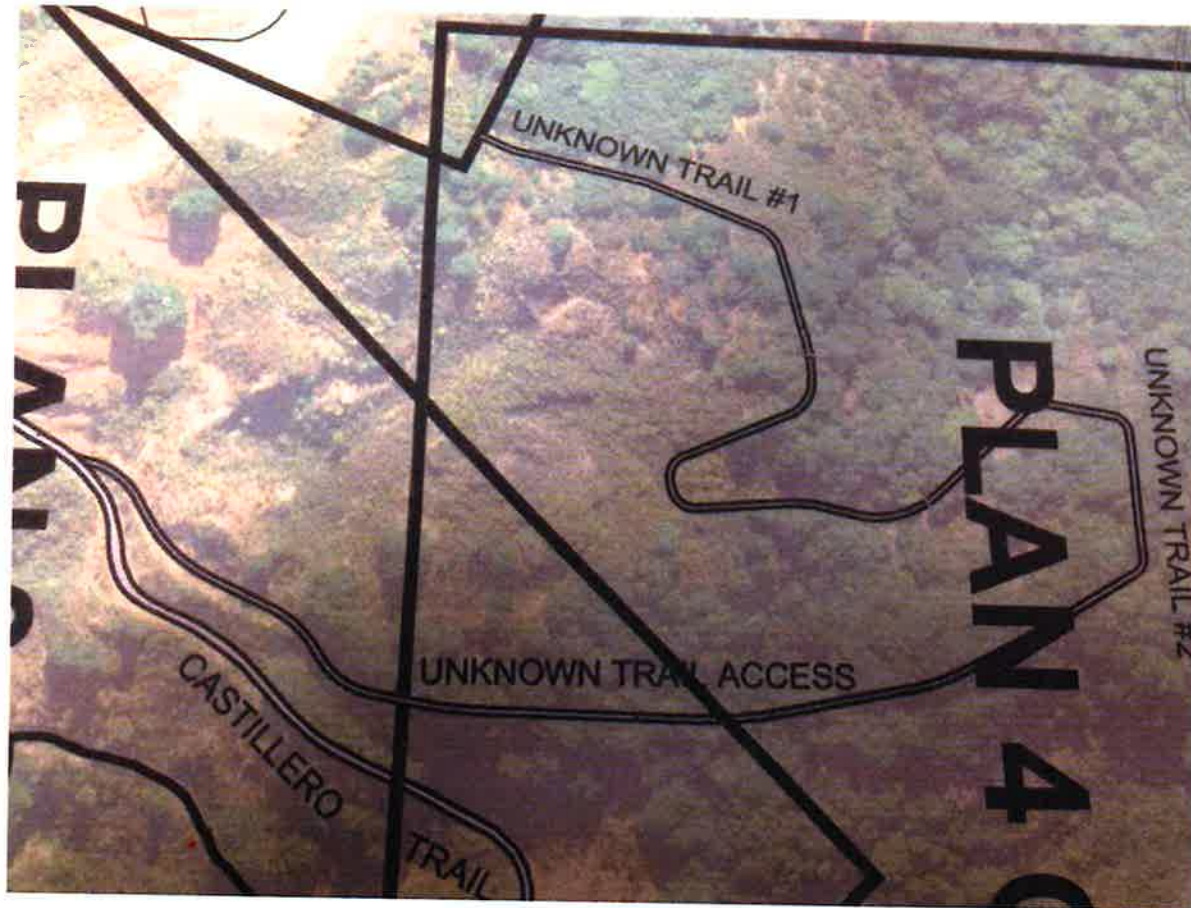
Yellow Kid Armored Crossing

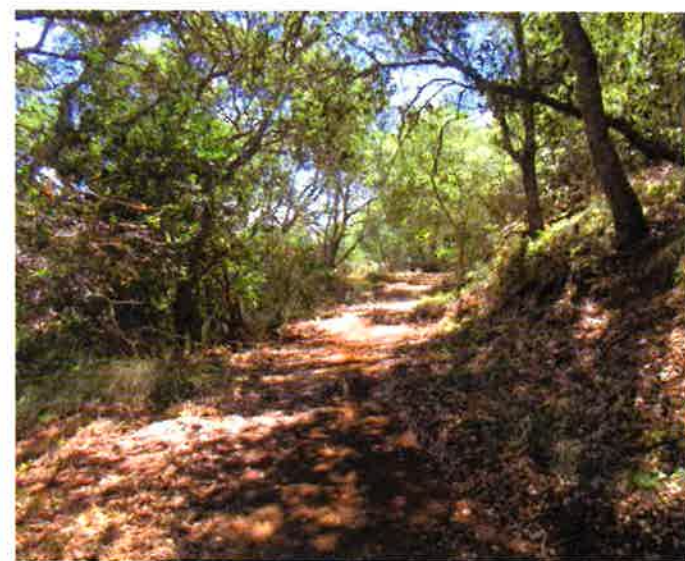




Yellow Kid Trail – Additional
Work to prevent erosion and wet,
muddy conditions

Unknown Trail





Unknown Trail



Unknown Trail #2- Existing
Conditions and Excavation; Unknown
Trail #1 calcines not found



Unknown Trail Paving and Slope Stabilization –

Clockwise from Lower Left: Rock-slope stabilization, Upper Trail, cul-de-sac trail end.

San Francisco Open Cut and Access Trail





Existing Access Trail to SF Open Cut



Access to SF
Open Cut -
Excavation



SF Open Cut – Prior to
Removal of Clay Cap Soil

SF Open Cut

- Transport and Spreading of Calcines on SF Open Cut

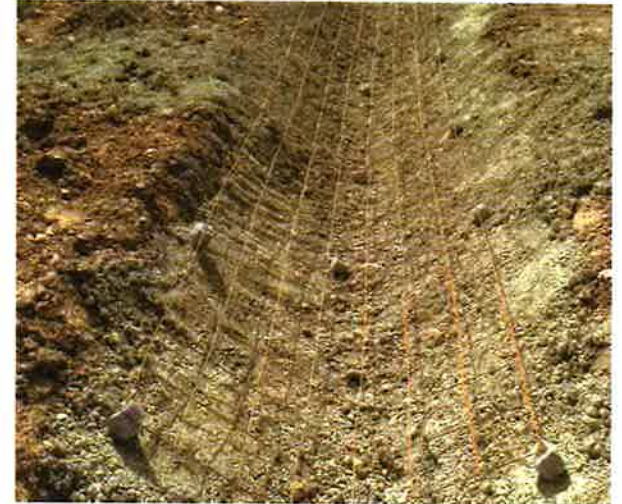




SF Open Cut – Spreading and
Compaction of Clay Cap over
Calcines



SF Open Cut — Rock Lined V Ditch along Access road
with new Aggregate Paving



SF Open Cut – Extension
of Concrete V-Ditch

Hydroseed Delivery

Clockwise from
lower left:
Hydroseeding of
SF Open Cut,
Superior
Hydroseeding
Delivery, seed mix



The End

