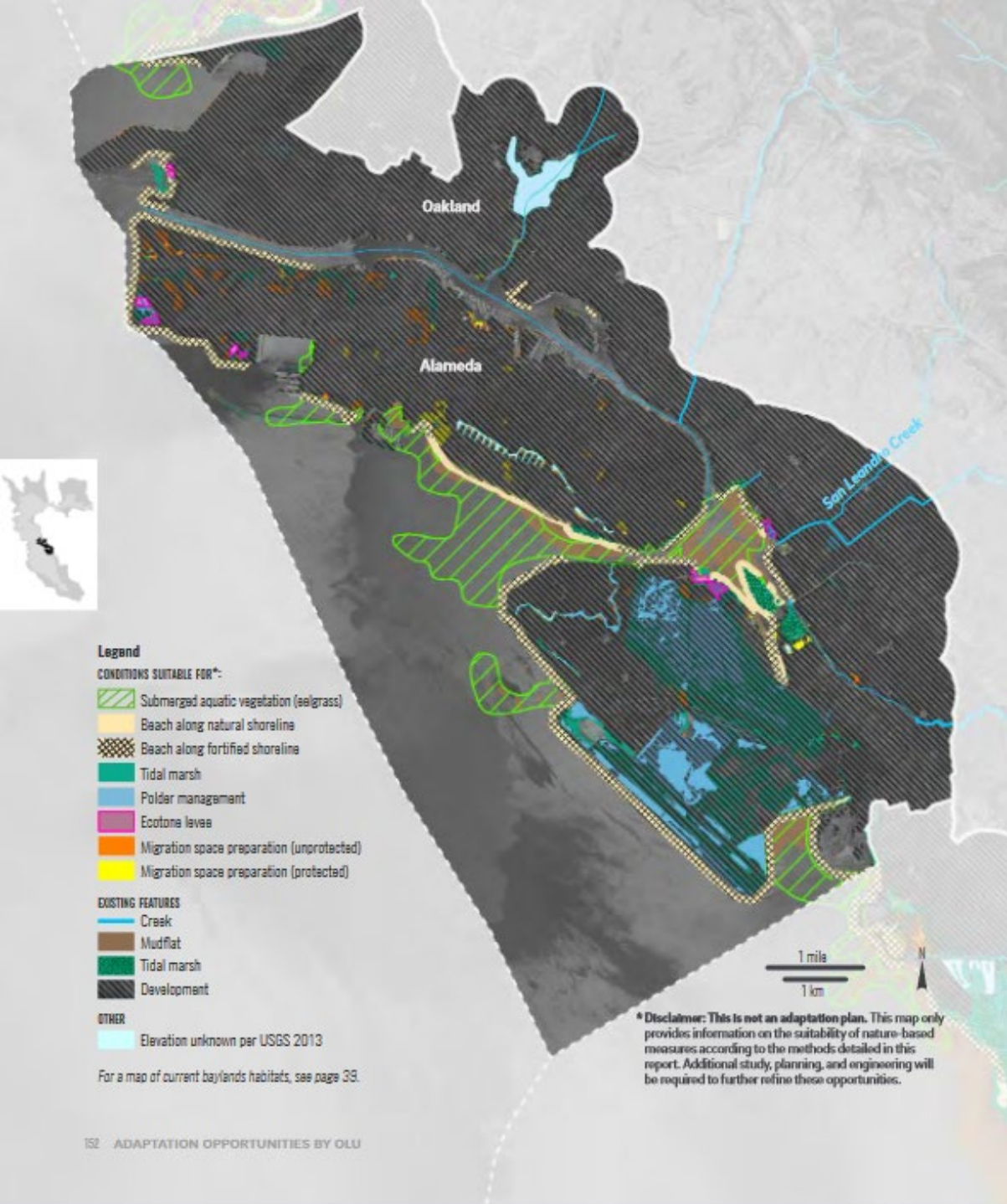


San Leandro Bay/Oakland- Alameda Estuary Adaptation Working Group

SF Estuary Partnership

May 18, 2022





Working Group coordinates San Leandro Bay/Oakland-Alameda Estuary flood and adaptation projects to protect and restore water quality, habitat and community resilience.



**San Leandro Bay
Oakland-Alameda Estuary
Adaptation Working Group**

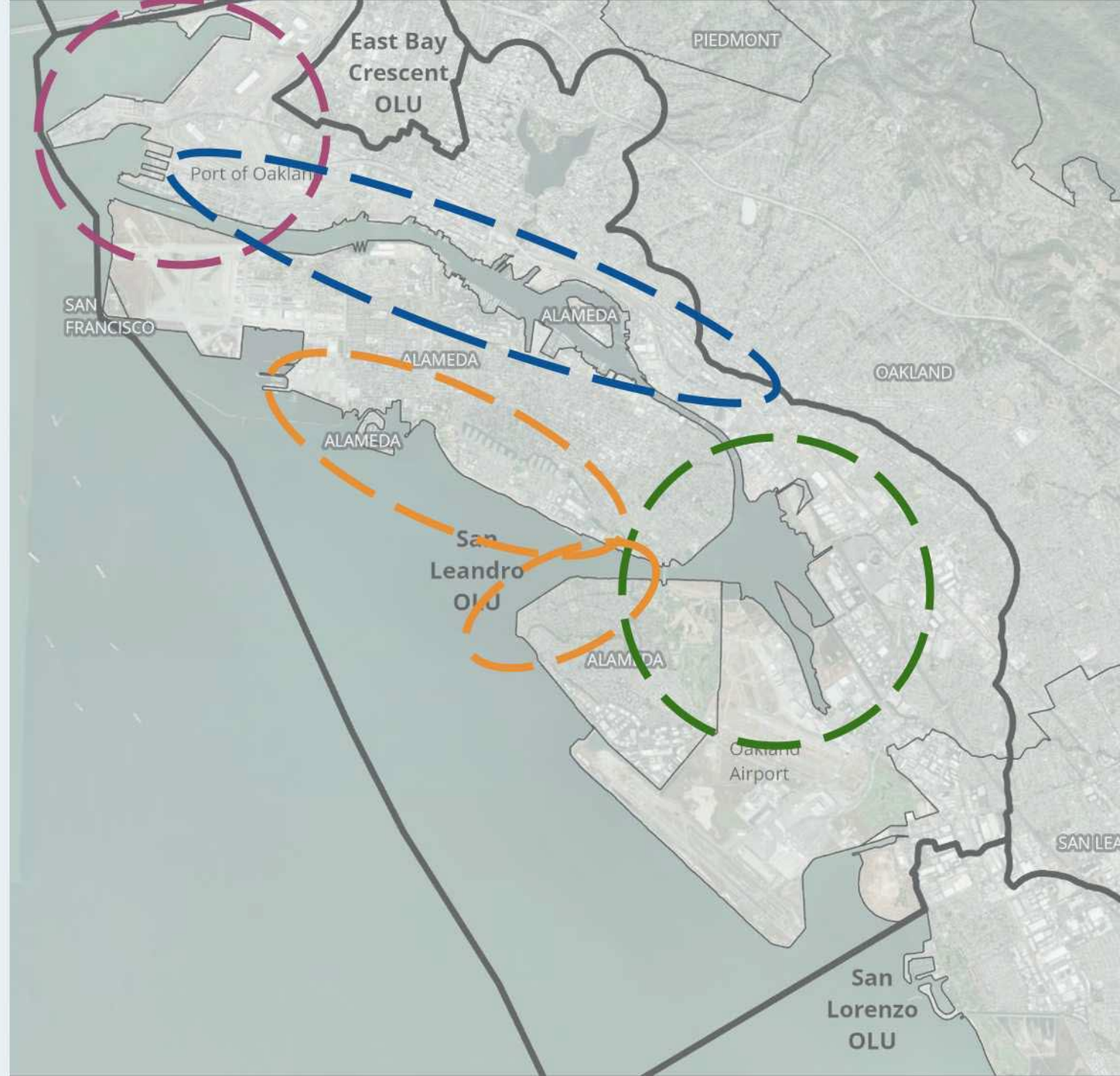
Working Group Composition

- Alameda County
- Alameda County Flood Control District
- Alameda County Mosquito Abatement District
- Assembly Member Mia Bonta's Office
- BART
- Baykeeper
- California State Coastal Conservancy
- Caltrans
- Capital Corridor
- City of Alameda
- City of Oakland
- City of San Leandro
- Community Action for a Sustainable Alameda (CASA)
- East Bay Municipal Utility District (EBMUD)
- East Bay Regional Parks District
- East Oakland Collective
- East Oakland Neighborhood Initiative
- Greenbelt Alliance
- Metropolitan Transportation Commission (MTC)
- Port of Oakland/Oakland International Airport
- San Francisco Bay Conservation and Development Commission (BCDC)
- San Francisco Bay Trail/Association of Bay Area Governments
- San Francisco Estuary Institute (SFEI)
- San Francisco Estuary Partnership (SFEP)
- San Francisco Bay Regional Water Quality Control Board
- Sogorea Te' Land Trust
- UC Berkeley
- US Army Corps of Engineers
- US Coast Guard
- West Oakland Environmental Indicators Project



4 Focus Areas

- Port - vertical walls, dredged channels, beaches, little marsh/transition zone
- Oakland Estuary and Lake Merritt - narrow, highly modified urban estuary
- San Leandro Bay - marsh habitat, little transition zone, creek mouths, watersheds
- Alameda Beaches - wave-dominated bayfront shoreline



Activities to date

- Quarterly meetings
- Steering committee
- San Leandro Bay Sub Working Group
- Developing team charter
- Caltrans Sustainable Transportation Planning Grant
- MLK Jr. Shoreline field trip



MLK Jr. Shoreline Field Trip



Project Outcomes

- Formalized organizational structure
- Action plan with shared vision and needs
- Funding for full CBO participation
- Regional Advisory Committee providing technical support, guidance and funding
- Pilot for locally-driven OLU based adaptation planning with regional partnership and support.



Project Benefits

- Capacity building
- Address shoreline governance challenges
- Engage vulnerable communities in planning
- Locally driven, community supported



Thank you!

Learn more: www.alamedaca.gov/AdaptationWorkingGroup

