

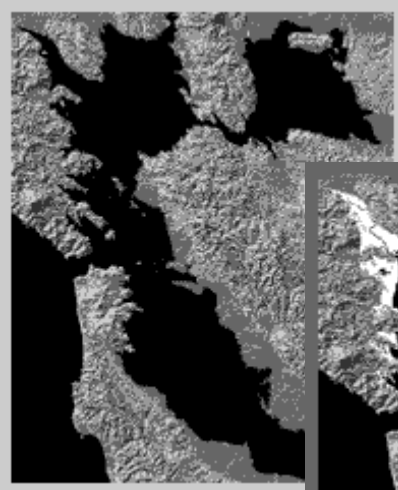
BAY ADAPT

REGIONAL STRATEGY FOR A RISING BAY

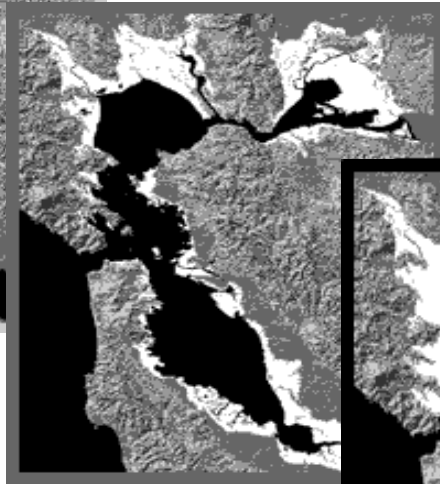
San Francisco Estuary Partnership
Implementation Committee
11/18/20

Jessica Fain, Director of Planning, BCDC
Jessica.fain@bcdcc.ca.gov

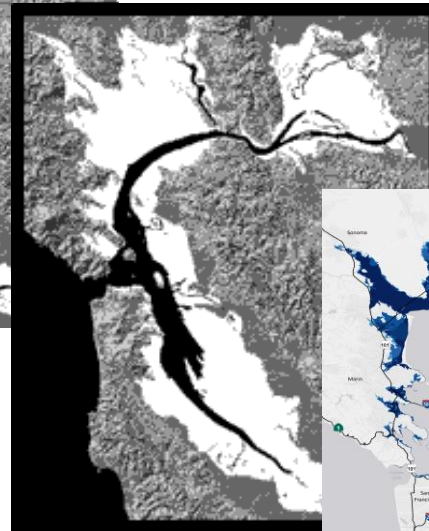
BCDC History and Future



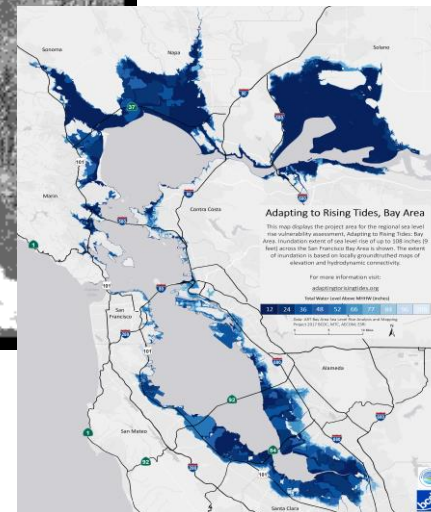
1849



1965



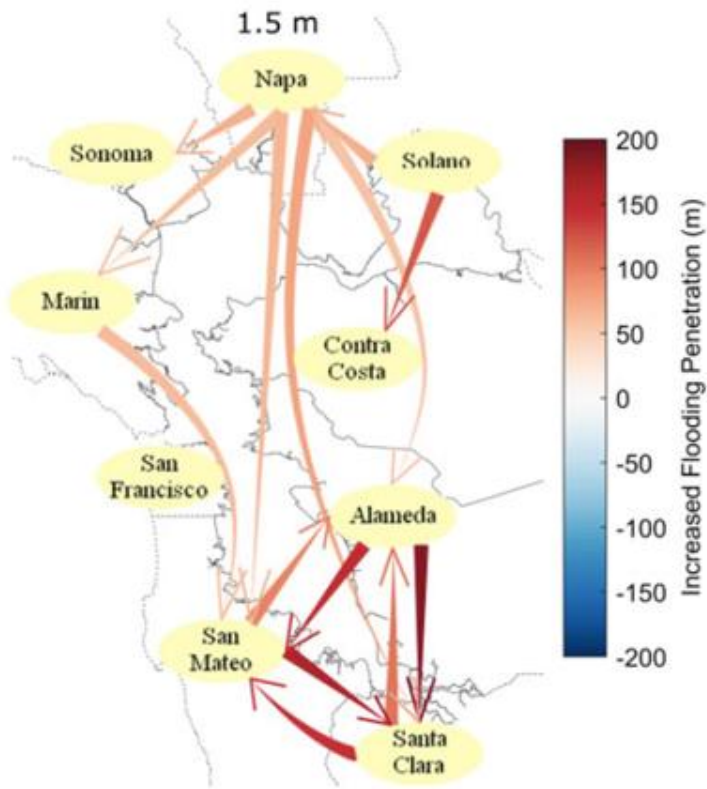
2020



2100?

BCDC protects and enhances San Francisco Bay and encourages the Bay's responsible and productive use for this and future generations.

The Challenge: A Rising Bay



Local Only Adaptation Will Lead to Insufficient Local and Regional Outcomes

- Uneven
- Unequal
- Under funded
- Uncoordinated
- Unknown

THE GOOD NEWS: A Foundation for Action



Climate
Science and
Guidance

Regional Plans
and Goals

Local and
Regional
Adaptation
Planning

Major
Projects

Funding

Regulatory
Updates

Organizing
Efforts

What's at Risk (40-100 years)?



5 million
daily highway
vehicle trips



13,000 existing
housing units

104,000
existing jobs

60,000 daily
rail commuters

70,000 new,
planned housing
units

85,000 new,
planned jobs

28,000 socially
vulnerable
residents



20,000 acres
of depressional
wetlands,
lagoon and tidal
marsh habitat

Where Do We Go From Here?



1. Integrated planning for ecosystems, housing, transportation, and sea level rise – **it's critical to plan for multiple issues at once**
2. Being **proactive vs. reactive** – wildfires are a lesson in the need for planning and investments before disaster strikes
3. Getting to a **comprehensive regional plan** for equitable adaptation and resilience
 - Guiding principles
 - Clear goals and outcomes
 - Roles and responsibilities at the local, regional, state, and federal levels

THE BAY IS RISING.
THE TIME TO COME
TOGETHER TO ACT IS NOW



What is Bay Adapt?



A Rising Bay



News & Events

Purpose

Develop and adopt a regional, consensus-driven strategy that lays out the actions necessary to adapt the Bay Area to rising sea level to protect people and the natural and built environment

Bay Adapt Components

**1. Develop
Guiding Principles** +

*for Bay Area
adaptation to rising
sea levels*

**2. Develop a
Joint Platform** +

*of shared
priority actions*

**3. Adopt the
Joint Platform**

*by committing to
act and act
together*

Bay Adapt Process

JOINT PLATFORM DEVELOPMENT



LEADERSHIP
ADVISORY GROUP



PUBLIC
FORUMS



WORKING
GROUPS



COMMUNITY +
ELECTED
OUTREACH

Bay Adapt Process

JOINT PLATFORM DEVELOPMENT



LEADERSHIP ADVISORY GROUP



PUBLIC FORUMS



WORKING GROUPS



COMMUNITY + ELECTED OUTREACH

Bay Area Regional Collaborative
(BARC)

Bay Area Regional Health Inequities
Initiative (BARHII)

Bay Area Climate Action Network
(BAYCAN)*

Bay Area Council

Bay Planning Coalition*
BCDC*

Building Industry Association
Caltrans

CHARG*

East Bay Regional Parks

Greenaction

Greenbelt Alliance

MTC / ABAG

Nuestra Casa

Resources Legacy Fund

SF Bay Water Quality Control Board

SF Bay Restoration Authority

San Francisco Estuary Institute
(SFEI)*

San Francisco Estuary Partnership
(SFEP)*

San Francisco Public Utilities
Commission*

San Mateo Flood & Resiliency District
Save the Bay

Shore Up Marin City

State Coastal Conservancy

Silicon Valley Leadership Group
SPUR

UC Davis

US Army Corps of Engineers

West Oakland Environmental
Indicators Project (WOEIP)*

**Working Group/Action Leads*

Bay Adapt Process

JOINT PLATFORM DEVELOPMENT



LEADERSHIP
ADVISORY GROUP



PUBLIC
FORUMS



WORKING
GROUPS



COMMUNITY +
ELECTED
OUTREACH

Guiding Principles



**Practice Inclusive, Community-Led
Governance and Decision Making**



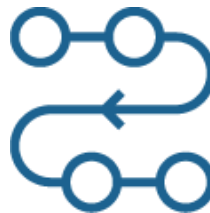
**Support Socially Vulnerable
Communities**



Solve Collaborative Problems Together



Go Green Where Appropriate



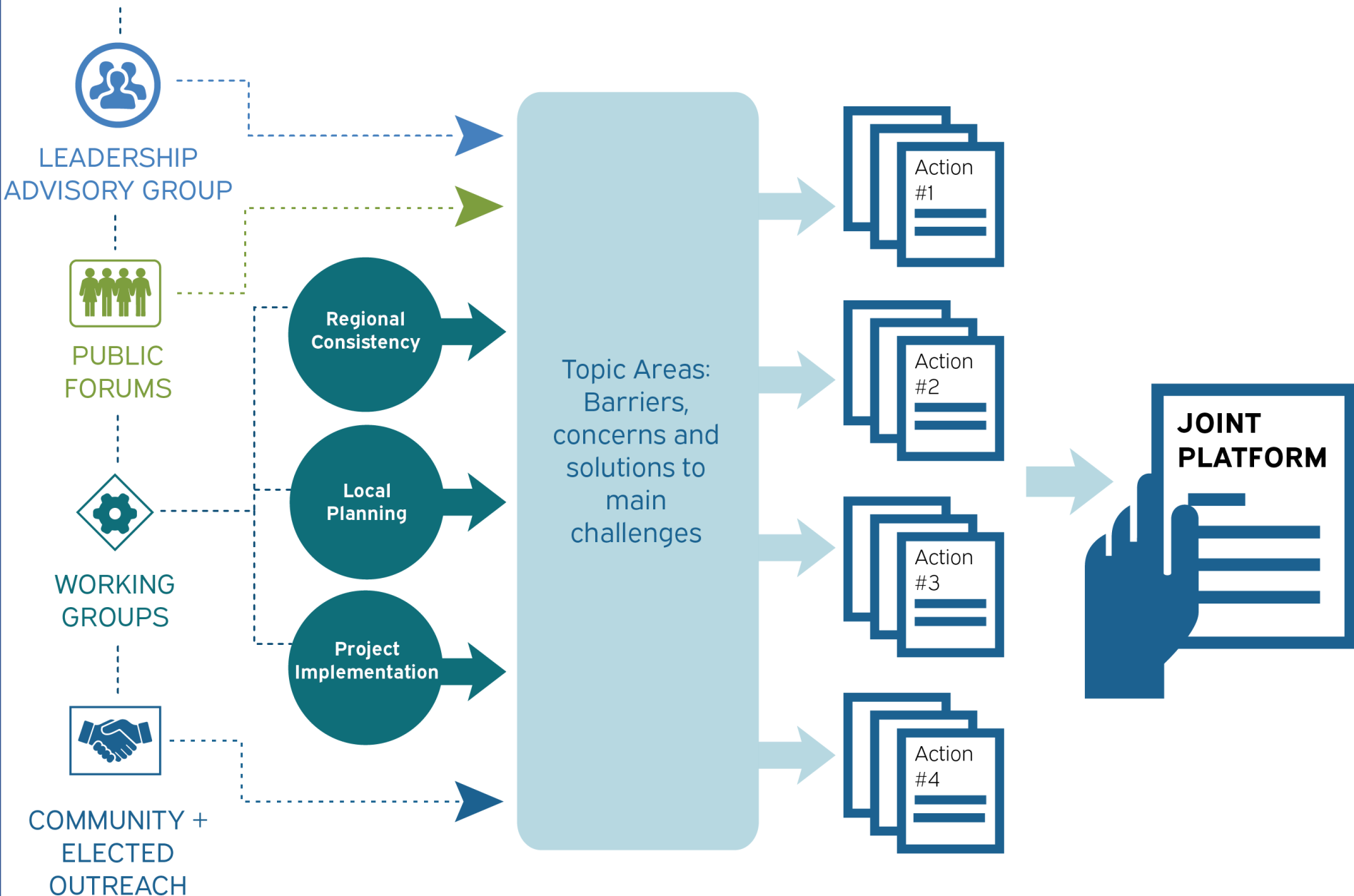
**Don't Hold Back Early Movers
but Play the Long Game**



**Pick the Right Strategy for
the Right Place at the Right
Time**

Bay Adapt Process

JOINT PLATFORM DEVELOPMENT



Joint Platform - Initial Draft

- Developed with ~100 Working Group members
- 15 actions (2-3 pages)
 - ✓ Problem Statement
 - ✓ Action Summary
 - ✓ Intended Outcome
 - ✓ Detailed Proposal
 - ✓ Implementation Roles
- Missing: minimal frontline community input, clear implementation roles, priorities

Joint Platform - Initial Draft (2)



REGIONAL VISION + CONSISTENCY



ENVIRONMENTAL JUSTICE



LOCAL-REGIONAL ALIGNMENT



FUNDING/
FINANCING

DATA, SCIENCE &
TECHNICAL
ASSISTANCE

PROJECT
IMPLEMENTATION



REGIONAL VISION + CONSISTENCY

ACTION 1

Establish a Regional Adaptation Vision
and Consistency Framework

ACTION 2

Identify a Collaborative Management Structure
for Administering Adaptation Activities



ENVIRONMENTAL JUSTICE

ACTION 3

Empower Communities to Lead in
Planning for Equitable Climate Adaptation

ACTION 4

Prepare Current and Future Climate Leaders
through Education, and Two-Way Learning



LOCAL-REGIONAL ALIGNMENT

ACTION 5

Incentivize Local Planning
to Meet Both Local and
Regional Goals

ACTION 7

Align State Planning
Requirements for Local
Jurisdictions

ACTION 9

Update Environmental
Regulations and Policies to
Allow for More Innovation

ACTION 6

Audit Cities and Measure
Region-Wide Progress

ACTION 8

Improve Coordination in
Permitting

FUNDING/FINANCING

ACTION 10

Develop a Regional
Adaptation Funding Plan

ACTION 11

Establish a Regional
Adaptation Legislative
Working Group

DATA & SCIENCE

ACTION 12

Create a Bay Area Climate
Services Consortium

ACTION 13

Establish an Adaptation
Resource Hub to Support
Local Planning

PROJECT IMPLEMENTATION

ACTION 14

Establish Place-Based
Stakeholder Groups to Plan
Across Larger Landscapes

ACTION 15

Improve Construction
Contracting and Logistics for
Adaptation Projects



What's Next

- Refine Draft Actions (Nov – Jan)
- Focus Groups (Nov – Jan)
 - Frontline Community + Youth
 - Elected Officials + Local Gov't
 - Civic / Industry
- Meet with LAG + Working Groups (Jan/Feb)
- Public Workshop + Outreach (Feb – March)
- Plan Alignment (Ongoing)
- Adoption by LAG (April 2021)