

An aerial photograph of a coastal region, likely the San Francisco Bay Area, showing a mix of water, wetlands, and a road. The image is overlaid with a blue and teal graphic in the top left corner.

PLAN BAY AREA 2050

Plan Bay Area 2050: Integrating Sea Level Rise

Rachael Hartofelis, MTC/ABAG

November 19, 2020

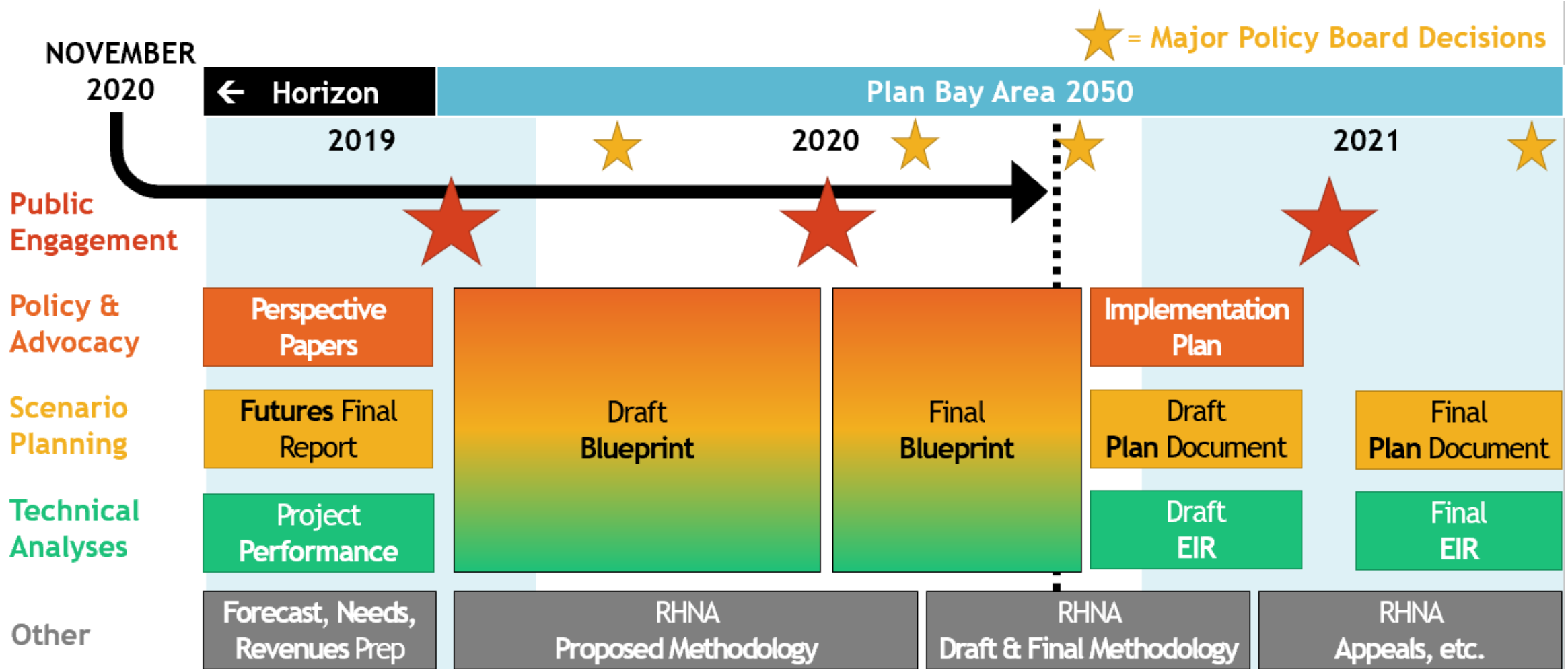
Plan Bay Area 2050: Resilient, Equitable Strategies

Vision: Ensure by the year 2050 that the Bay Area is **affordable**, **connected**, **diverse**, **healthy** and **vibrant** for all.

- **Transportation** Strategies
- **Housing** Geographies & Strategies
- **Economic** Geographies & Strategies
- **Environmental** Strategies



Plan Bay Area 2050: Process & Schedule



Final Blueprint: 11 Themes and 35 Bold Strategies



Maintain and Optimize the Existing System



Create Healthy and Safe Streets



Build a Next-Generation Transit Network



Protect and Preserve Affordable Housing



Spur Housing Production at All Income Levels



Create Inclusive Communities



Improve Economic Mobility



Shift the Location of Jobs



Reduce Risks from Hazards



Expand Access to Parks and Open Space



Reduce Climate Emissions

Cross-cutting Themes



Resilience



Equity

Bold Strategies for a Healthier Environment



Strategies to tackle climate change:

- Expand Clean Vehicle Initiatives
- Fund Energy Upgrades to Enable Carbon Neutrality in Existing Buildings
- Expand Transportation Demand Management Initiatives
- Institute Telecommuting Mandates for Major Office-Based Employers
 - *Commission will further review this strategy by December 2020*

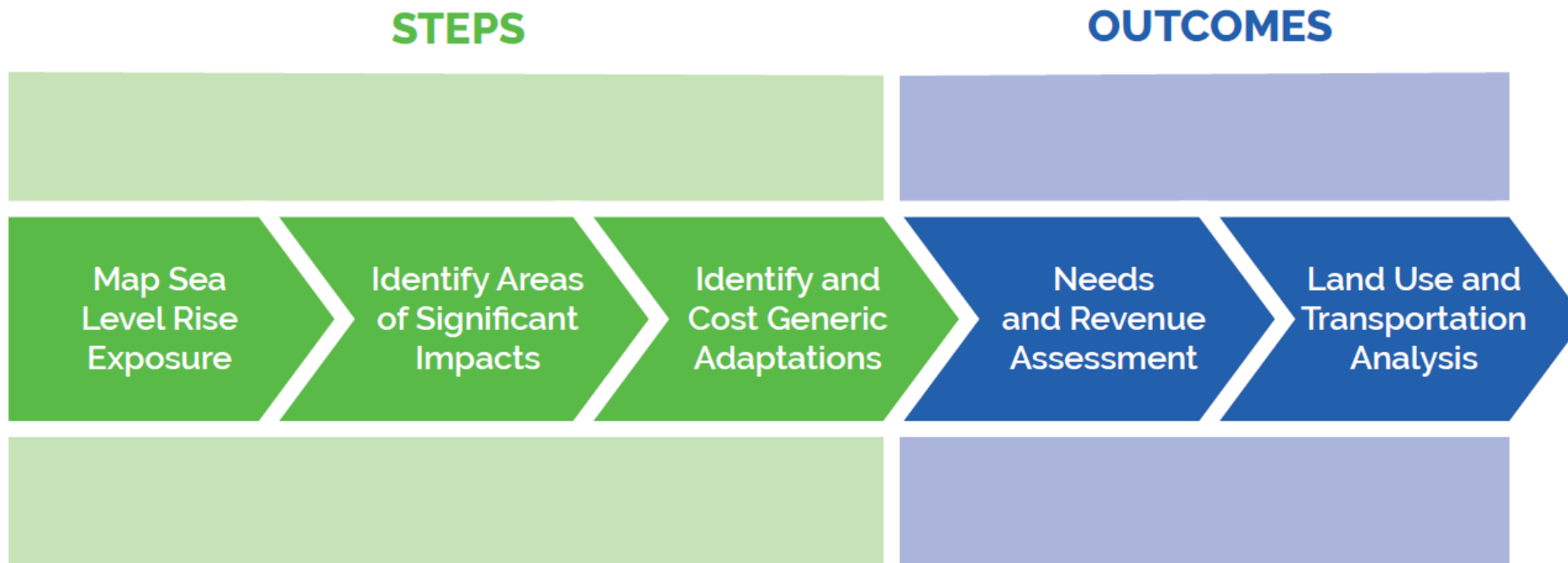
Strategies to expand access to parks and open space:

- Modernize and Expand Parks, Trails, and Recreation Facilities
- Protect and Manage High Value Conservation Lands
- Maintain Urban Growth Boundaries

Strategies to protect tens of thousands of Bay Area homes:

- **Adapt to Sea Level Rise**
- Provide Means-Based Financial Support to Retrofit Existing Residential Buildings

Final Blueprint: Integrating Sea Level Rise



- The “**Adapt to Sea Level Rise**” strategy has gone through many analyses, and has been refined through a series of steps.
- Plan Bay Area 2050 will be the first time sea level rise is integrated into the long-range plan.

Final Blueprint: Mapping Sea Level Rise and Identifying Significant Exposure

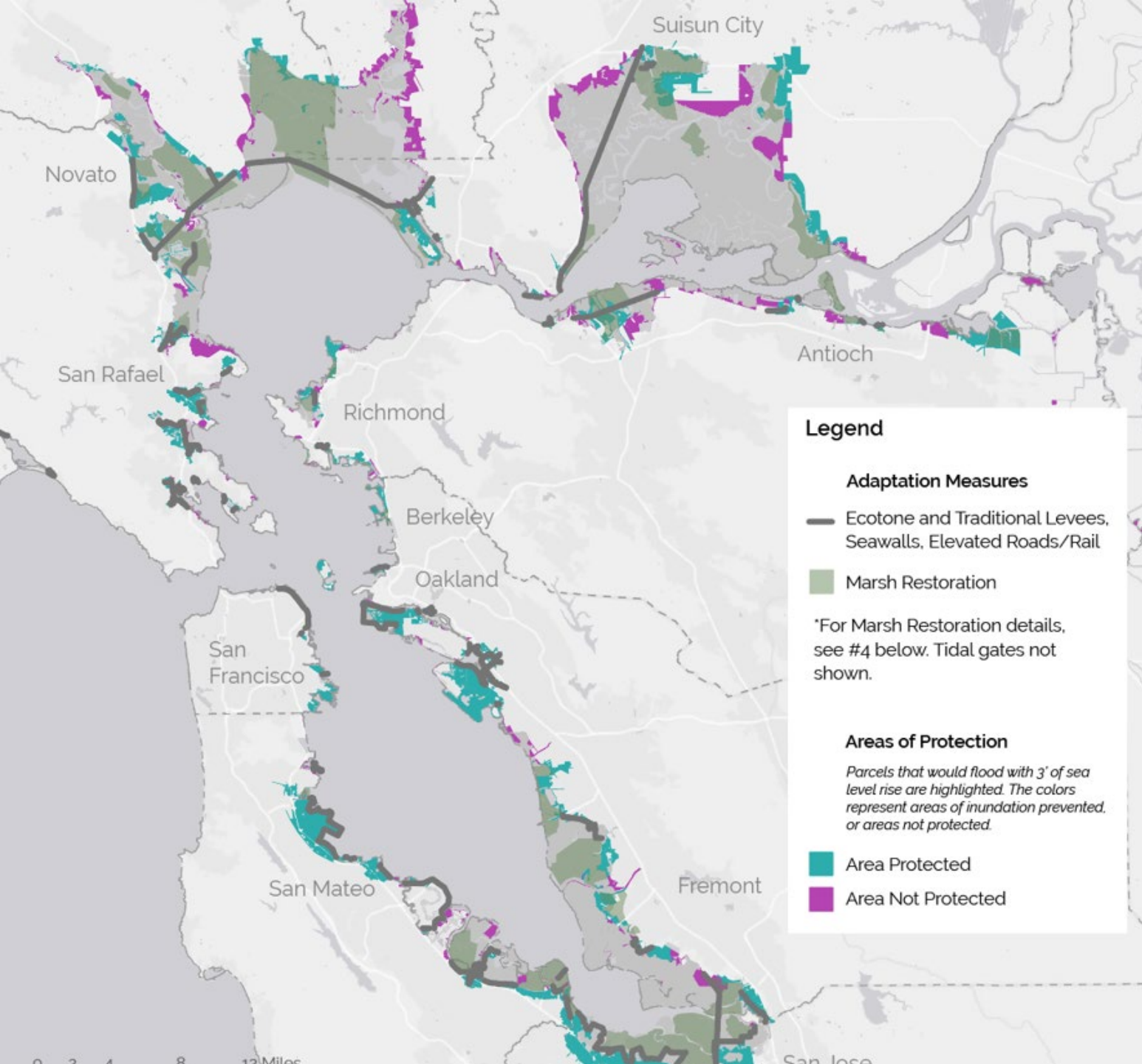
- **Assumed 2 feet of permanent inundation by 2050**
 - Based on 0.5% exceedance in 2018 OPC Guidance
- **Leveraged BCDC mapping to flag inundation areas with:**
 - Existing socially vulnerable communities
 - Existing urban and suburban neighborhoods
 - Future growth areas
 - Transportation corridors with significant volumes
- **Costed a buyout program for unflagged parcels with residences**



Final Blueprint: Cost Generic Adaptations for Areas with Flagged Impacts

Generic adaptations were used to create high level cost assumptions for the strategy

- Known existing concepts were integrated into the plan
- Where no specific adaptation was known for a segment of flagged shoreline, staff leveraged tools like the Adaptation Atlas, and subject matter expert guidance.



Final Blueprint: Needs and Revenue Assessment

The analysis estimates future financial needs related to critical expenditure categories for Plan Bay Area 2050, and the baseline available revenues to support the work.

NEEDS ASSESSMENT

(Based on 2 feet of
sea level rise)

\$19 Billion

EXISTING REVENUE

(30-year estimate of sea level
rise eligible sources)

\$3 Billion

PROPOSED REVENUE

(\$8B projected from resilient
transportation sources)

\$16 Billion

Sea Level Rise Outcomes in Plan Bay Area 2050 Draft Blueprint



Housing

89,000 units protected, 2,000 units still at risk



Jobs

166,000 jobs protected, 10,000 jobs still at risk



Environment

100,000 acres of marsh adaptation projects



Transportation

All major highway and rail corridors protected at 2 feet of sea level rise

The Final Blueprint and Implementation Plan

Final Blueprint

Planning Timeframe

30-year planning horizon



Description

A package of strategies (policies and investments) for local, regional, and state governments

Milestones

Strategies defined in Sept. 2020
Outcomes analyzed in Dec. 2020

Implementation Plan

Planning Timeframe

2021 through 2025



Description

Near term actions for MTC/ABAG in partnership with other public, private, and non-profit entities

Milestones

Kickoff in November 2020

A Strategy vs. An Implementation Action

Final Blueprint Strategies



A strategy is either a public policy or a set of investments that can be implemented in the Bay Area over the next 30 years; a strategy is not a near-term action or legislative proposal.

Implementation Plan Actions



Implementation actions are the specific actions that will be required to advance the Plan Bay Area 2050 Final Blueprint strategies in the next one-to-five years.

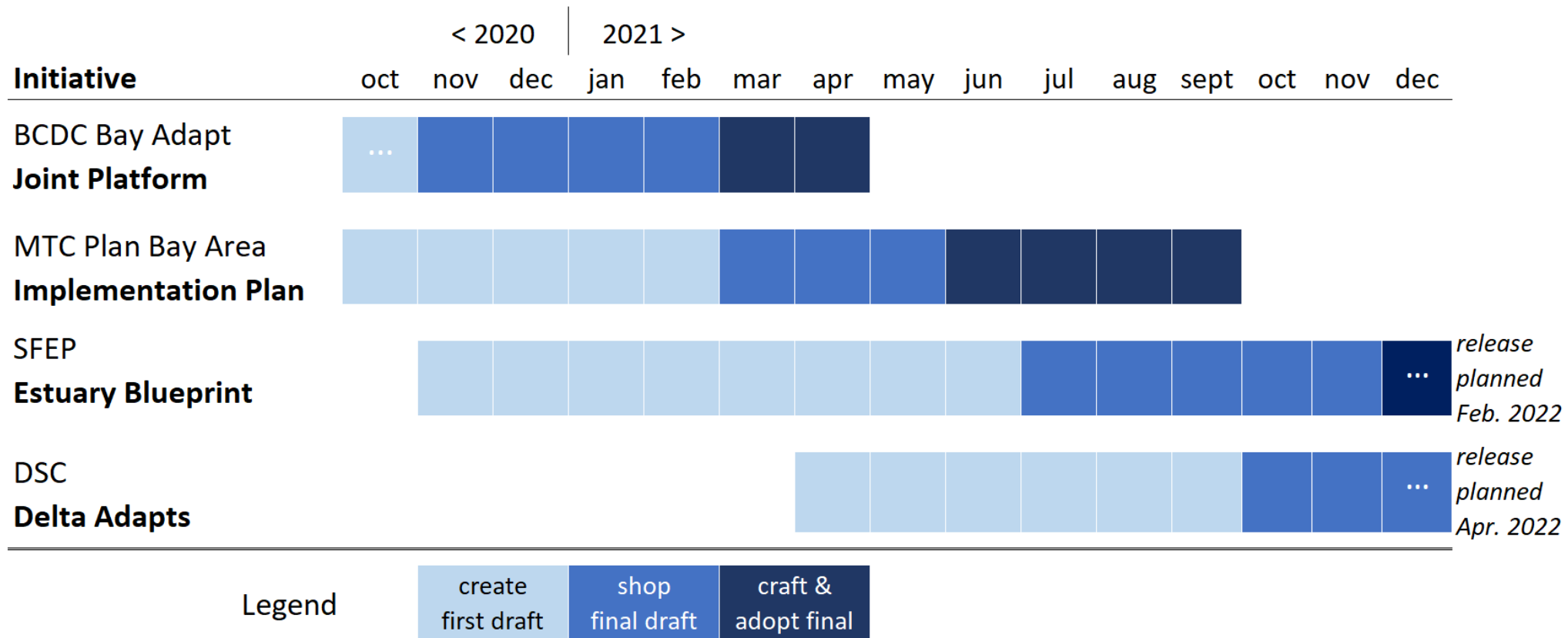
Implementation Plan Objectives

Staff will have the following objectives for each Plan strategy with respect to implementation:

- 1. Identify requirements for strategy success**
 - Authority, financial resources, technical capacity, public/political support
- 2. Identify MTC/ABAG role**
 - Lead, partner, support
- 3. Identify vehicles for strategy implementation**
 - Advocacy/legislation (including outreach/communications, regulation, etc.)
 - New or ongoing initiatives (policy, project/program, convening/task force)
 - Planning and research (technical assistance, data and modeling)
- 4. Recommend detailed implementation actions**
 - Include key details like timeframe for implementation

Complementary Initiatives

- Alignment on these initiatives will focus on coordination with both outreach, and **action** development.
- **BCDC's Joint Platform Actions** and **MTC/ABAG's Implementation Actions** are intended to be mutually supportive.



Looking Ahead

Final Blueprint

Sept 2020 - Early 2021

Final analysis on the regional Adapt to Sea Level Rise strategy will be presented to MTC/ABAG boards after public release in January.

Implementation Plan

Nov 2020 - Summer 2021

The first step in the process occurs November 17 and 19 at virtual workshops. Join the mailing lists below to hear about more opportunities to engage.

Mailing Lists

Plan Bay Area 2050 Mailing List

<https://www.planbayarea.org/your-part/mailing-list>

Regional Advisory Working Group Mailing List

<https://mtc.ca.gov/about-mtc/what-mtc/mtc-organization/partnership-committees/regional-advisory-working-group>

Contact

Resilience: Rachael Hartofelis,

rhartofelis@bayareametro.gov

Implementation Plan: Chirag Rabari,

crabari@bayareametro.gov