

# RESILIENT SOUTH CITY

## SOUTH SAN FRANCISCO, SAN MATEO COUNTY

Resilient by Design  
Bay Area Challenge

October 2019

Richard Mullane,  
Principal, HASSELL

HASSELL+

RESILIENT

BAY AREA CHALLENGE

BY

DESIGN



## Our Team

The **HASSELL+** team understands water. We understand designing for water, living with water and **the immense social potential that waterfront places offer communities** when they are connected to them.



## The Challenge

A year-long **collaborative design challenge** bringing together local residents, public officials and local, national and international experts to develop **innovative community-based solutions** that will strengthen our region's resilience to **sea level rise, severe storms, flooding and earthquakes**

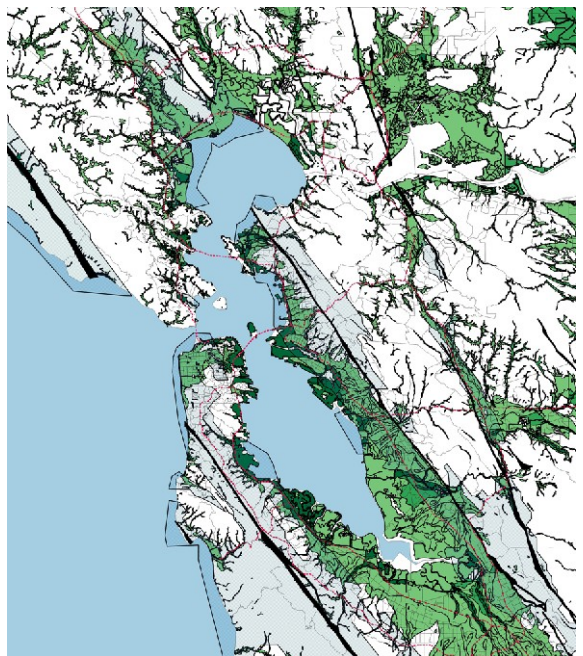
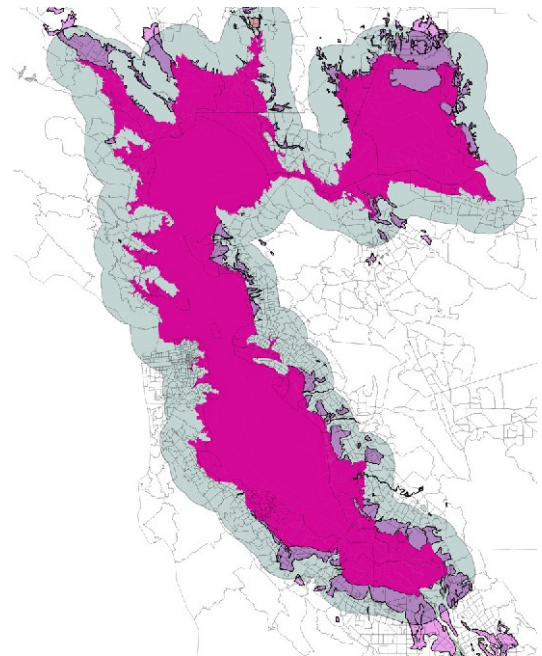
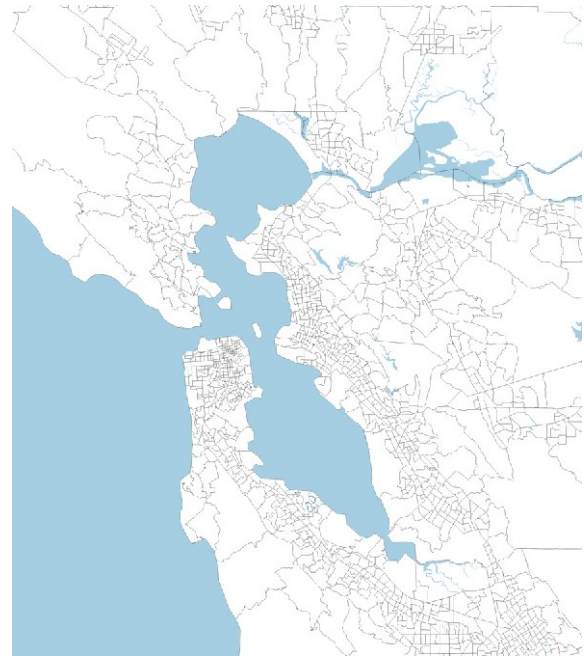
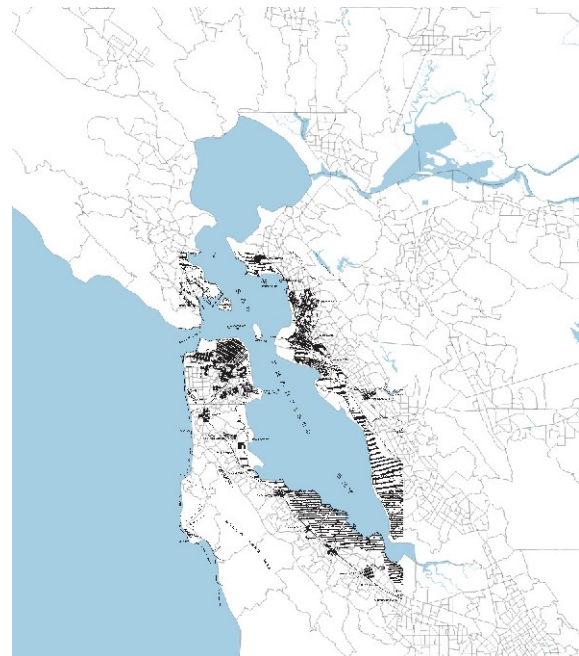
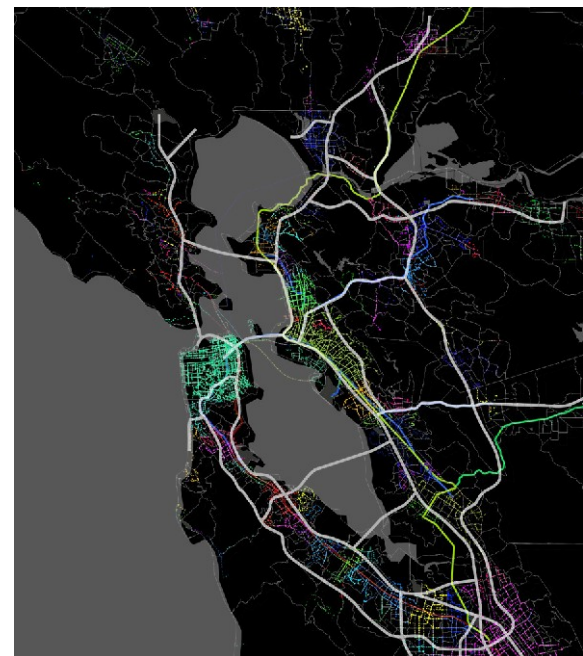
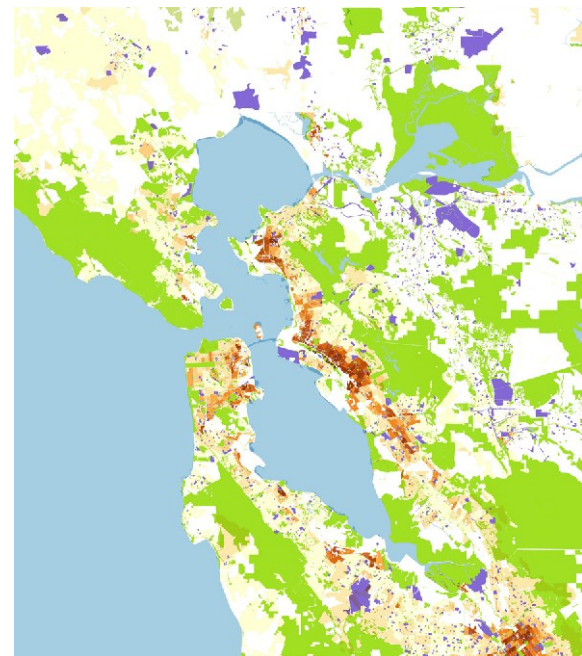
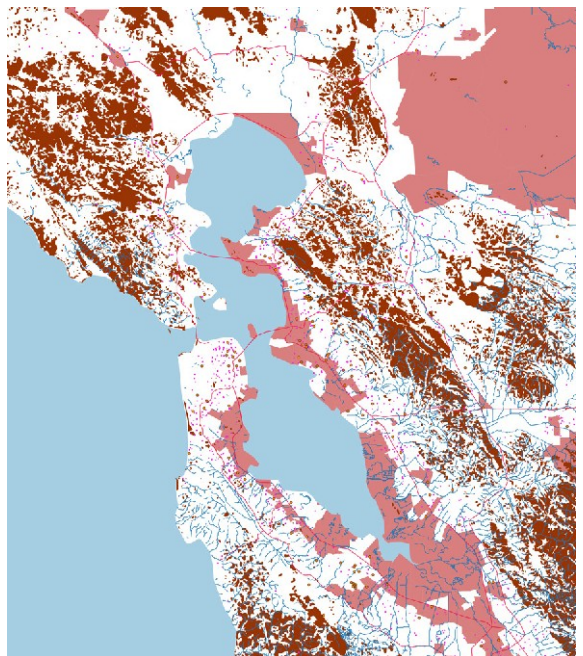
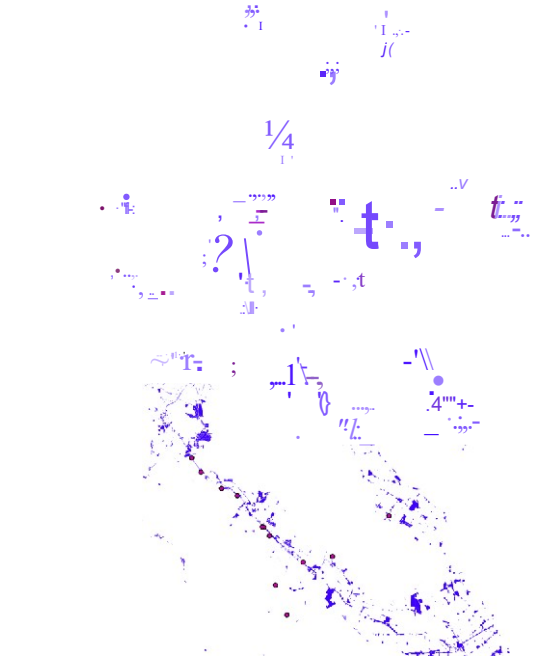
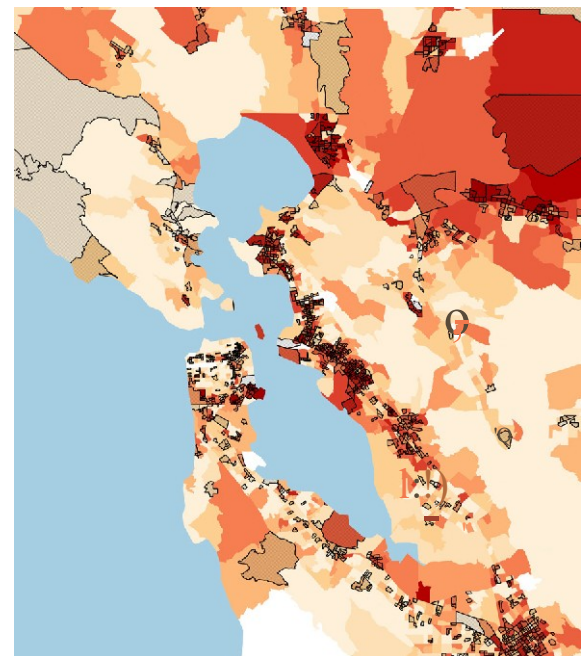
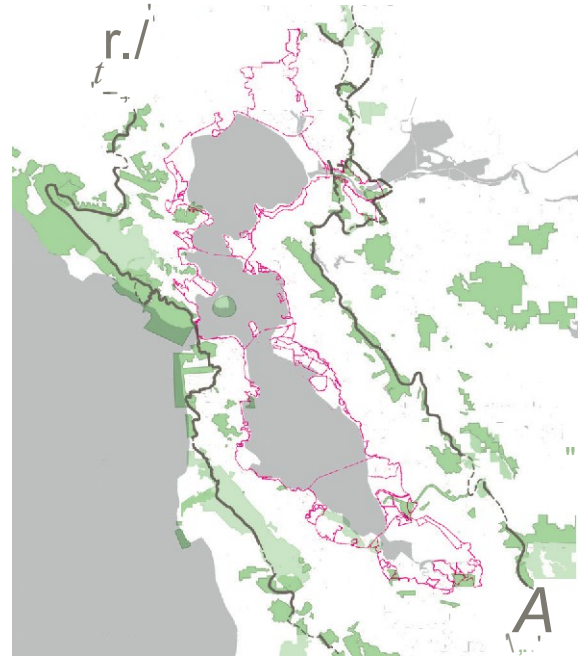
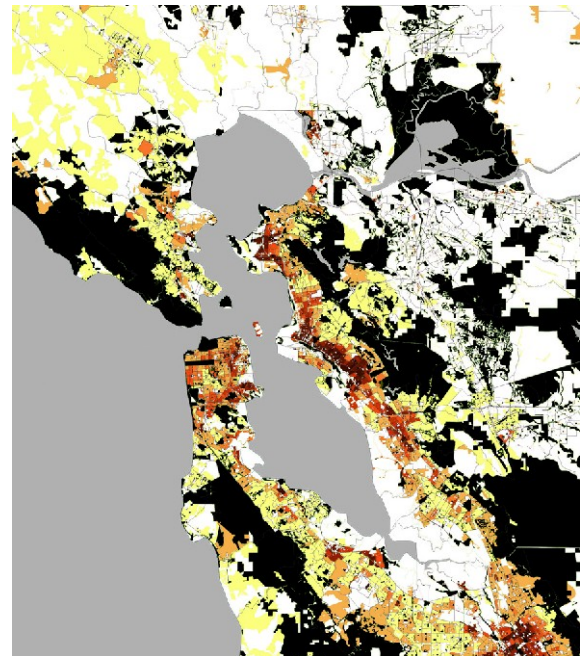
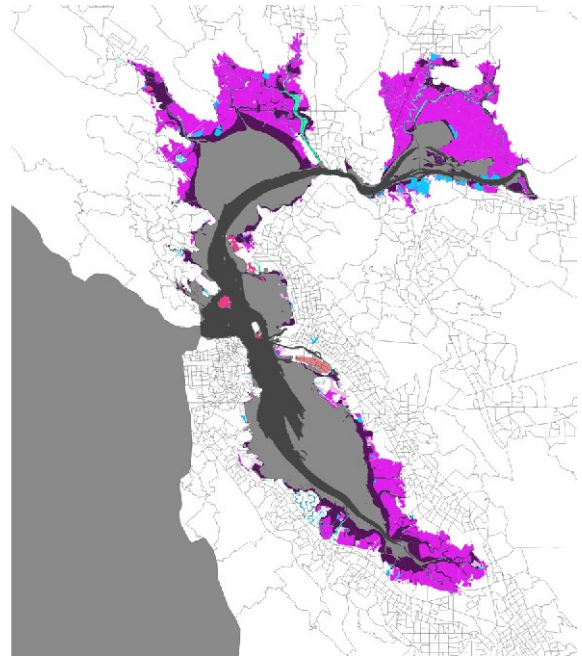
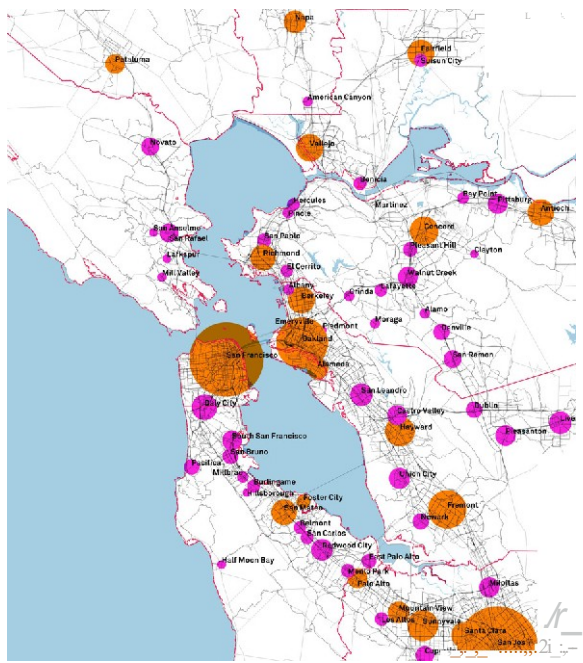
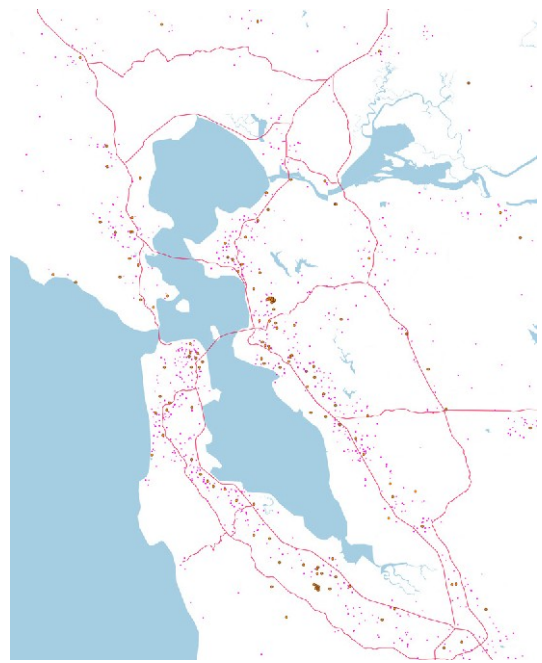
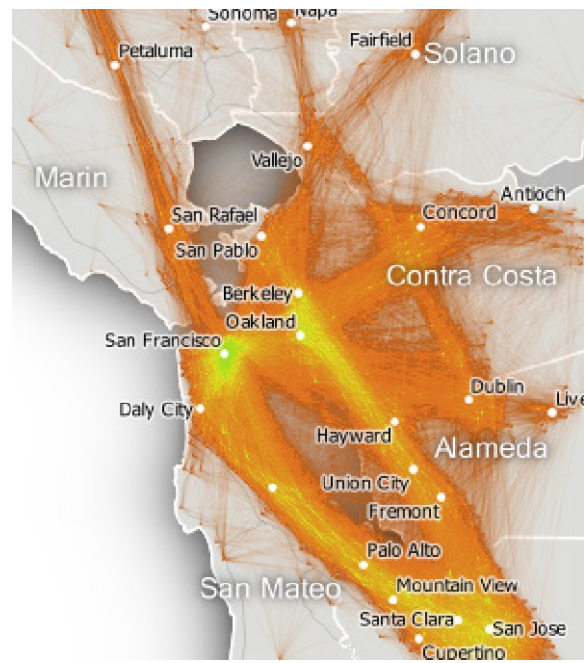
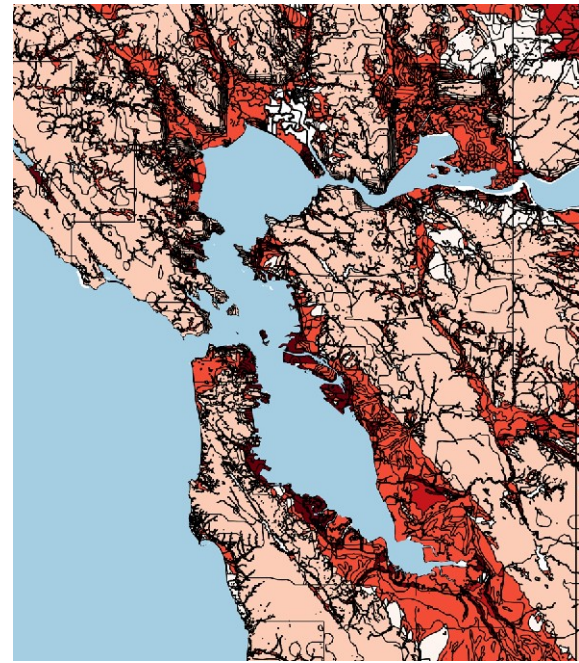
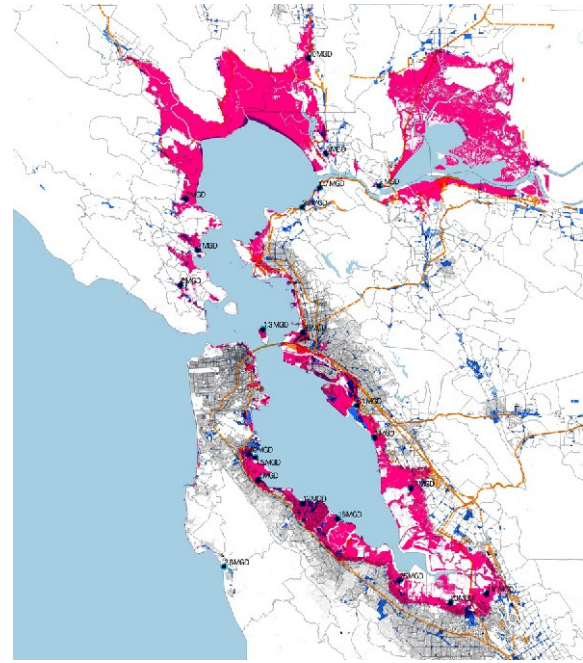
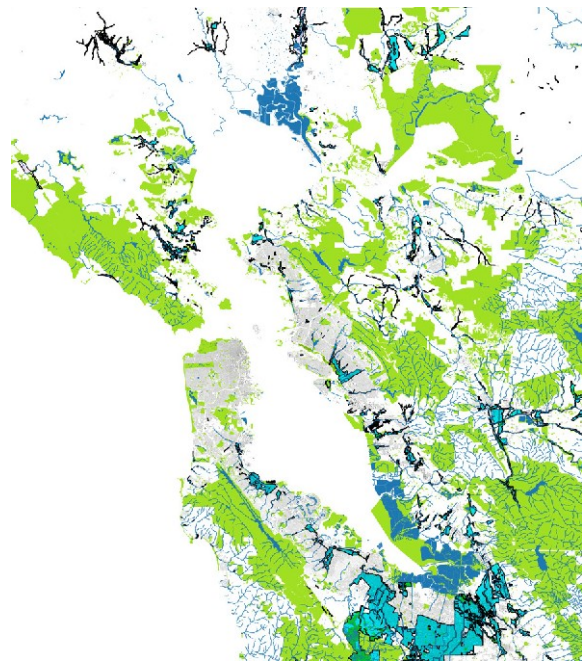






HASSELL









304

WHAT

WOULD

YOU DO TO

BECOME

RESILIENT





# SOUTH CITY STOREFRONT

“A little higher.... Yeh that’s the spot. It floods there sometimes... plus it’s hard to cross the street! I’m no expert but I’ve got a couple of ideas...”

HASSELL





# SOUTH CITY ENGAGEMENT





# STAKEHOLDERS & ENGAGEMENT

**CITY OF SOUTH SAN FRANCISCO**  
**MAYOR & COUNCILMEMBERS**  
**CITY MANAGER'S OFFICE**  
**DEP. ECONOMIC DEVELOPMENT**  
**DEP. PLANNING**  
**DEP. PARKS & RECREATION**  
**DEP. PUBLIC WORKS**  
**SAN MATEO COUNTY**  
**SUPERVISOR PINE'S OFFICE**

**COUNTY FLOOD DISTRICT**  
**OFFICE OF SUSTAINABILITY**  
**SAMTRANS**  
**SAN FRANCISCO AIRPORT**  
**SOUTH SAN FRANCISCO WATER**  
**QUALITY CONTROL PLANT**  
**COLMA CREEK ADVISORY COMMITTEE**  
**CITY OF SAN BRUNO**  
**DEP. PUBLIC WORKS**

**CALIFORNIA COASTAL CONSERVANCY**  
**CALIFORNIA DEPARTMENT OF TRANSPORT**  
**WATER EMERGENCY TRANSIT AUTHORITY**  
**SAN FRANCISCO ESTUARY INSTITUTE**  
**THE SIERRA CLUB**  
**GENENTECH(ESTATES & SUSTAINABILITY)**





An aerial, black and white photograph of a coastal town. The town is densely packed with buildings, mostly rectangular in shape, and is situated on a flat area. To the left of the town, there is a wide, sandy beach that meets the ocean. In the background, a range of mountains or hills rises against a light sky. The overall scene is captured from a high angle, providing a clear view of the town's layout and its proximity to the water.

**"In those days, one would head for the beach with his bathing trunks and a towel. No lunch, no snacks, no bottled water, etc.**

**..Just salt water and sunshine"**

**- Karl Rolih, past resident**



**ANALYSIS:  
HISTORIC HYDROLOGY 1896**

**HASSELL**





# ANALYSIS: FEMA FLOOD ZONE



**RESILIENT SOUTH CITY** Resilient South City is in South San Francisco, California. Published by Richard Mullane [?] · 2018 ·

Have you seen flooding in South City over the years? We want to know the problem spots! This image was taken at Grand Ave/Airport Blvd (11 December 2014)



5,924 people reached [Boost Again](#)

Wendy Sinclair-Smith if the water gets to the height of this mock photo then those neighborhoods I mentioned above will be in very serious trouble.  
Like Reply Message 1w Edited

Nancy Kehle I remember in the late 50's or early 60's my Dad worked on Linden when it flooded real bad and he and a co-worker where going up and down Linden in a row boat.  
Like Reply Message 1w

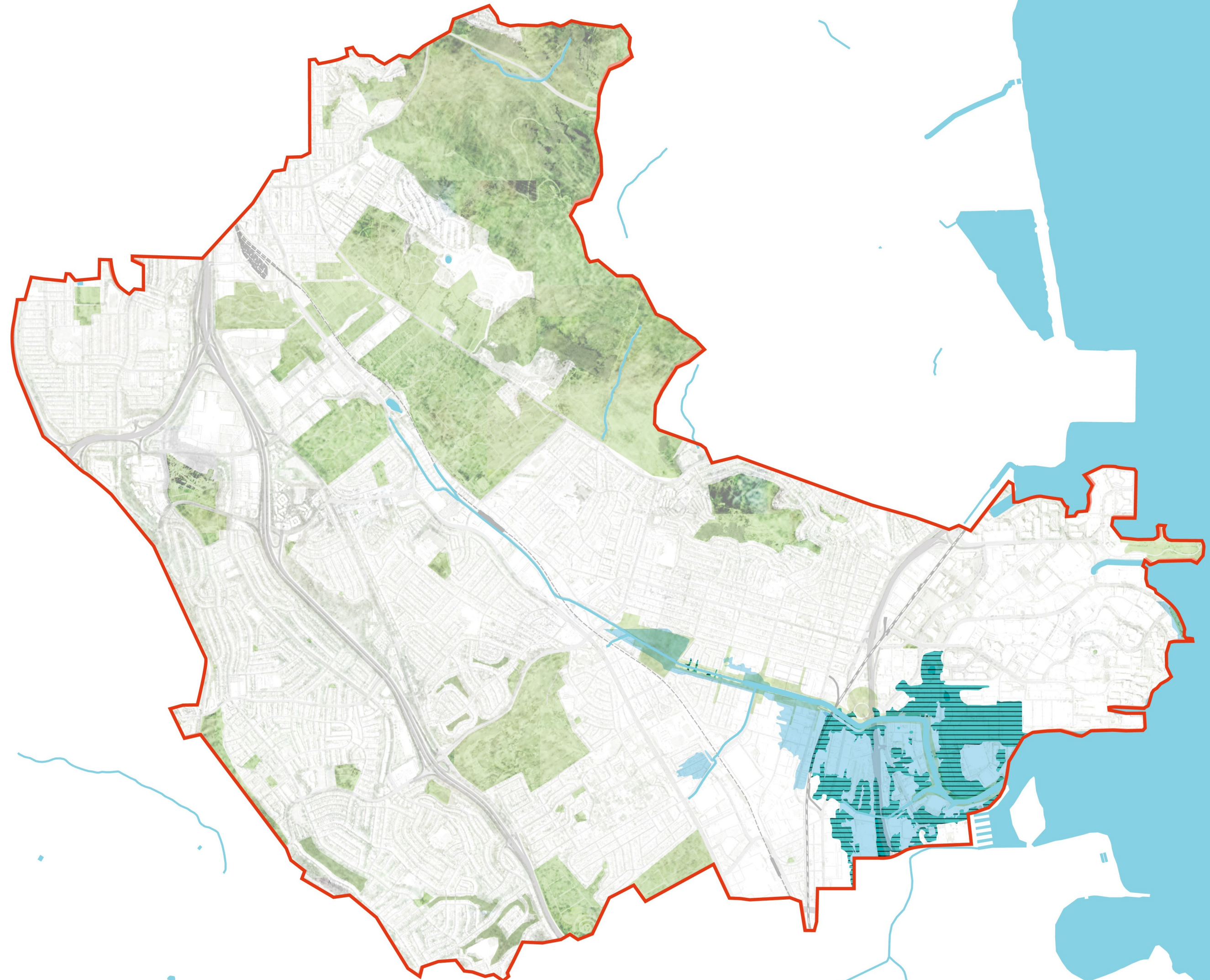
Resilient South City Incredible! Do you have any photos of when this happened? We are always looking for photos and stories about the creek from back in the day!  
Like Reply Commented on by Jenny Gonzalez [?] · 2d  
View more replies

Sal Lopez Man that's a trip looks so real. You never know what can happen. I remember when it flooded a couple years back the entrances of the freeway on airport we couldn't leave.  
Like Reply Message 6d

Aaron Marks Get us off fossil fuels!  
Like Reply Message 6d

Alfonso Murillo San Francisco is seeking millions to repair the seawall along the Embarcadero...if I was you, I'd be getting in line for possible funds.  
Like Reply Message 4d

Write a comment...





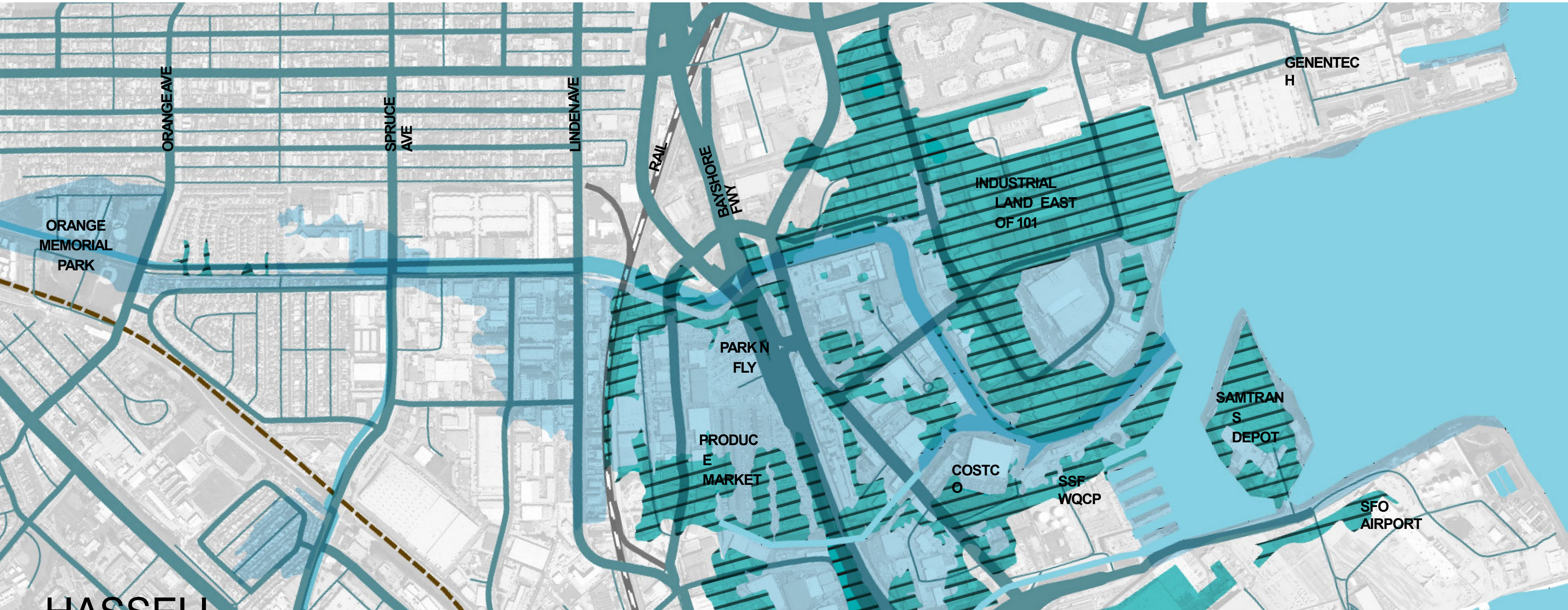
# COLMA CREEK



HASSELL



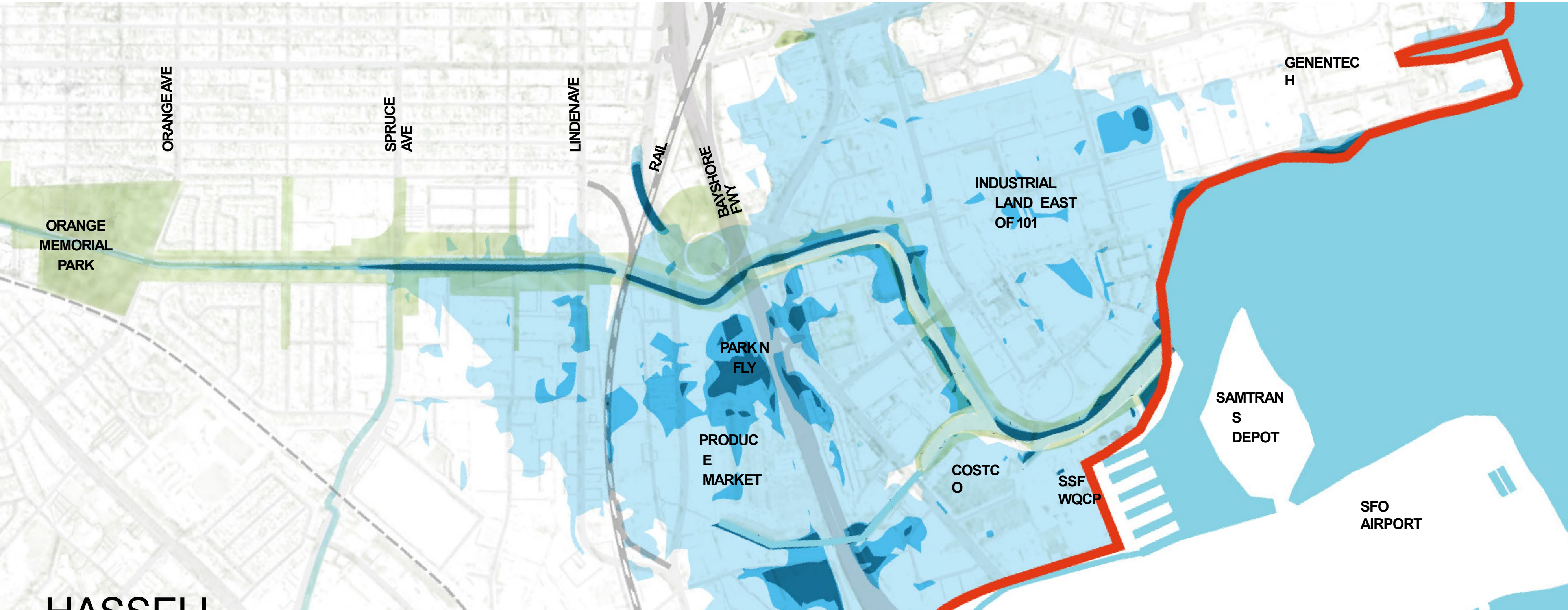
# ANALYSIS: COLMA CREEK FEMA FLOOD ZONE



HASSELL



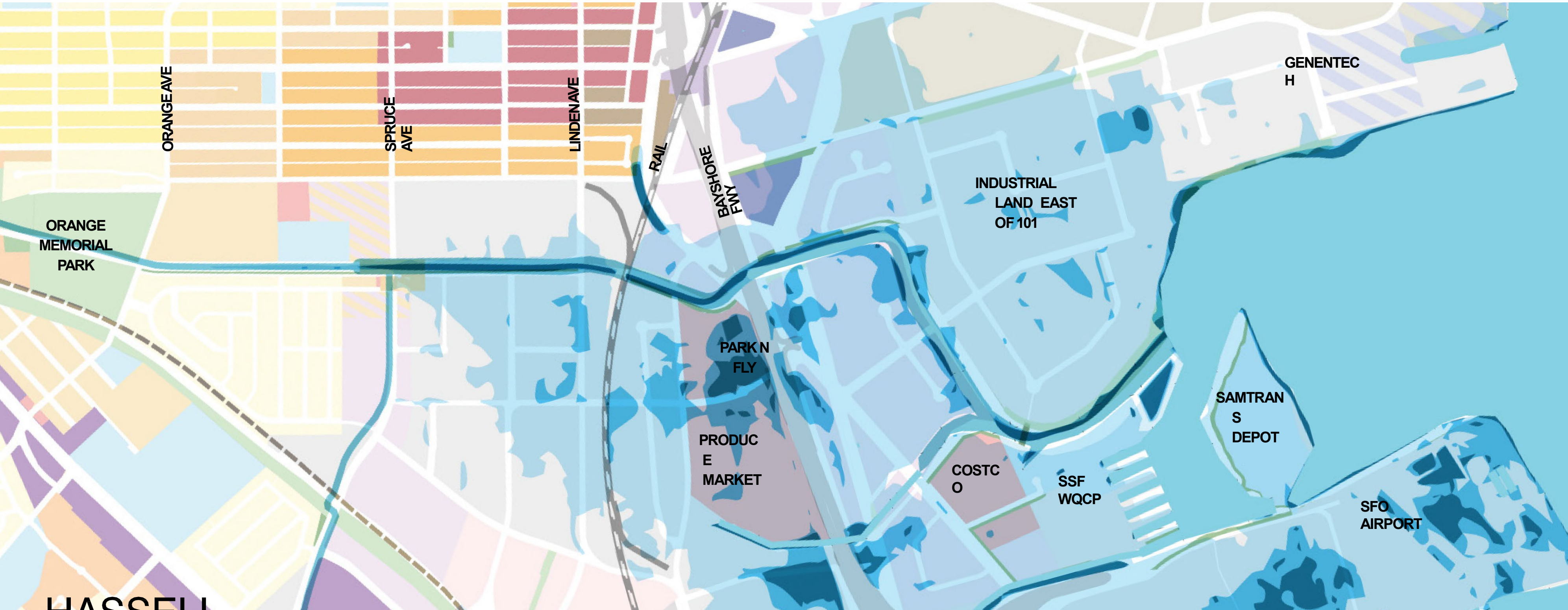
# ANALYSIS: 60" SEA-LEVEL RISE + 100YR EVENT



HASSELL



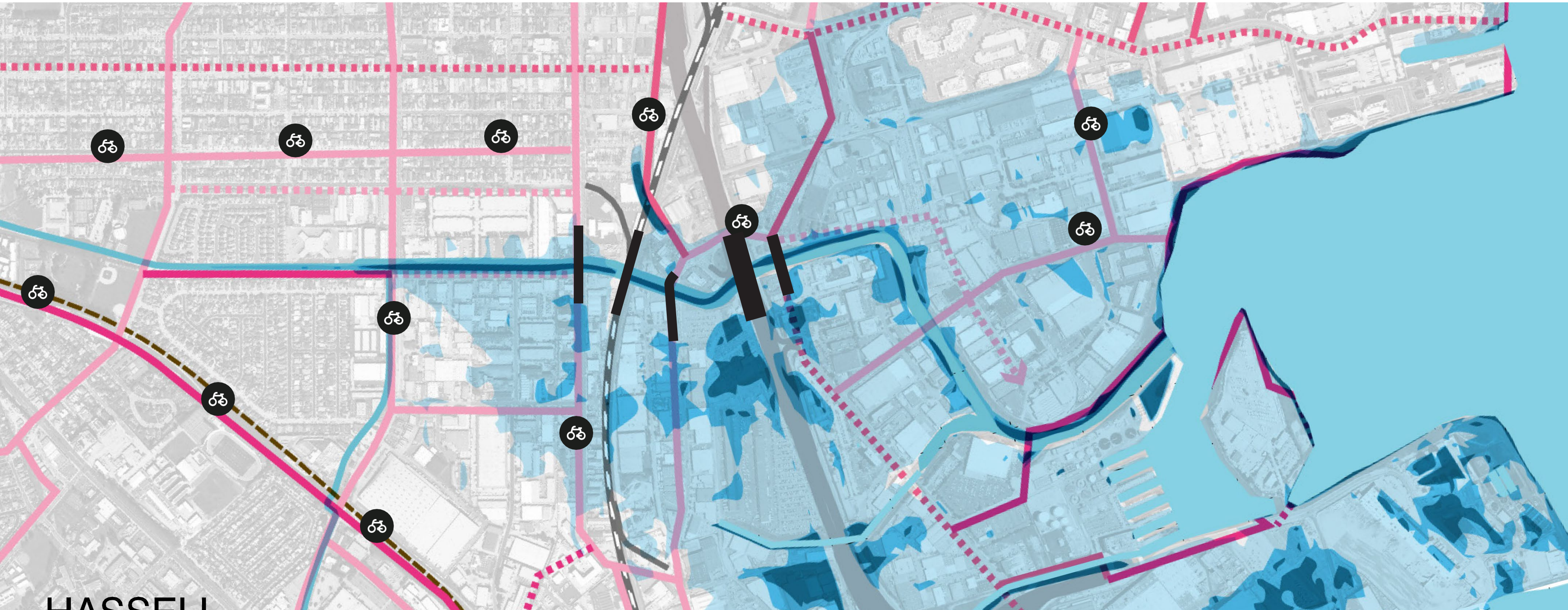
# ANALYSIS - COLMA CREEK: LAND USE AT RISK



HASSELL



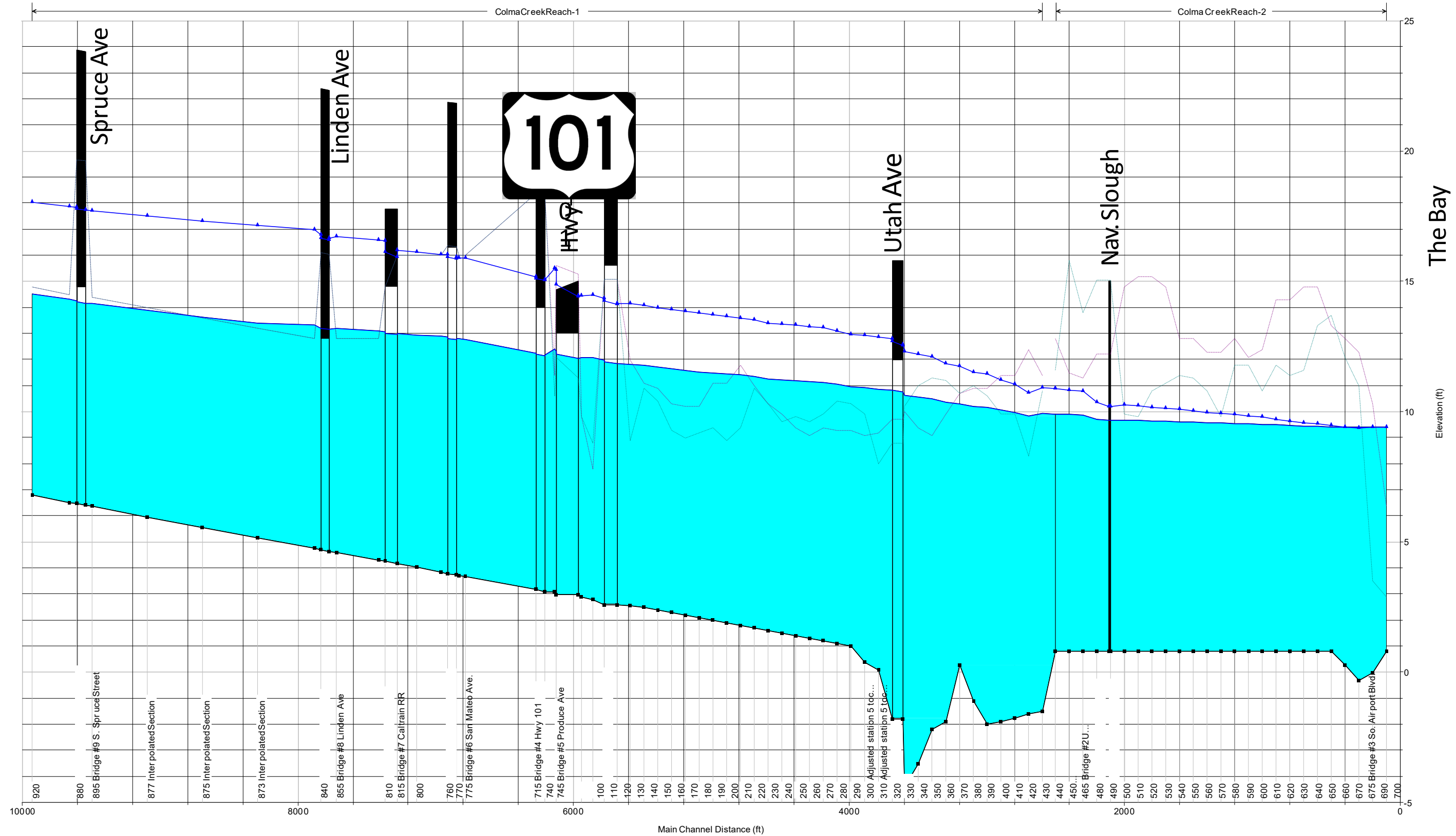
# ANALYSIS - COLMA CREEK: POOR ACCESS TO WATERFRONT



HASSELL

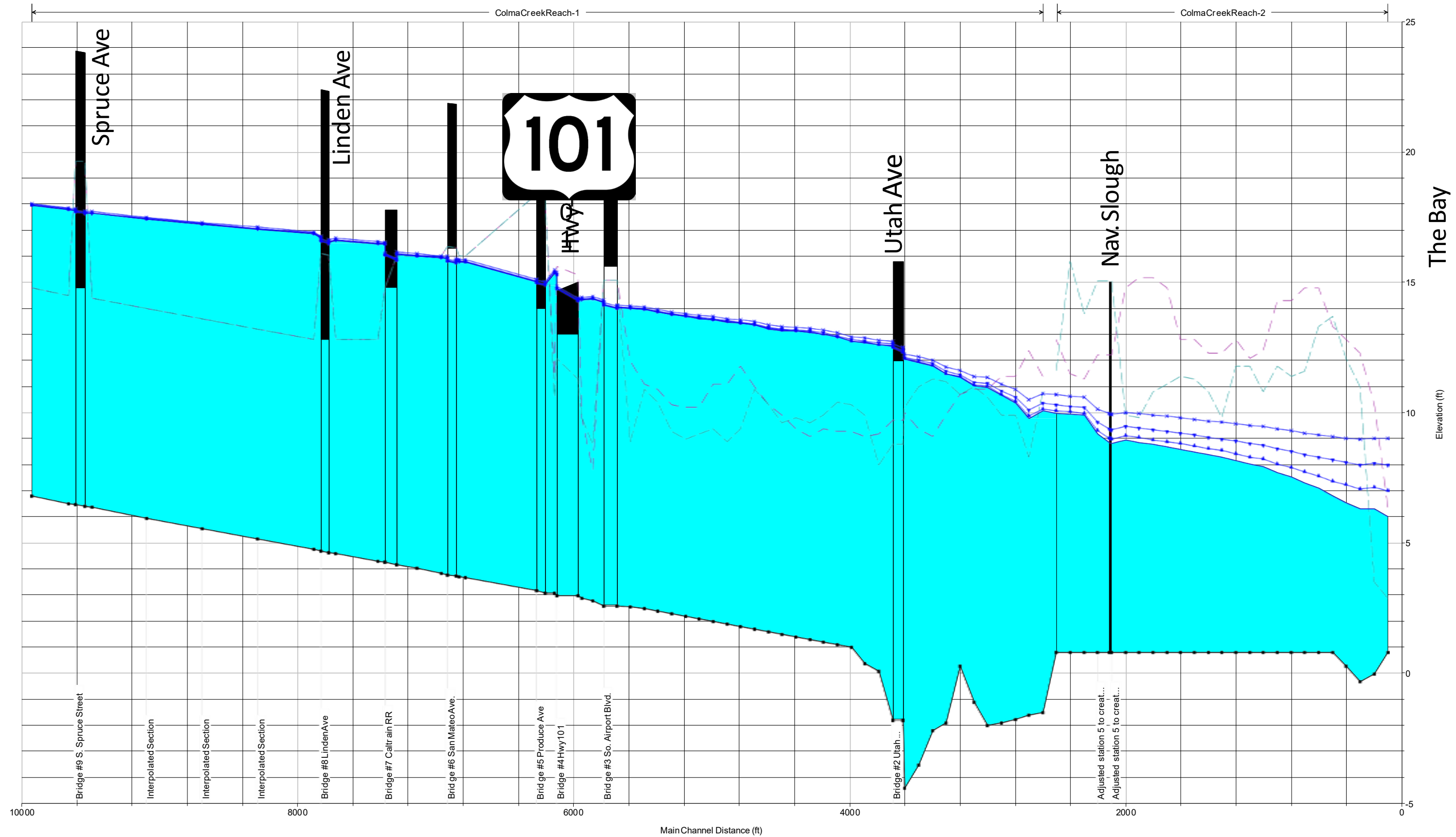


# ANALYSIS - COLMA CREEK: CREEK FLOW MODEL - 10YR EVENT (100 YR DOTTED)





# ANALYSIS - COLMA CREEK: CREEK FLOW MODEL - 100YR EVENT+SLR



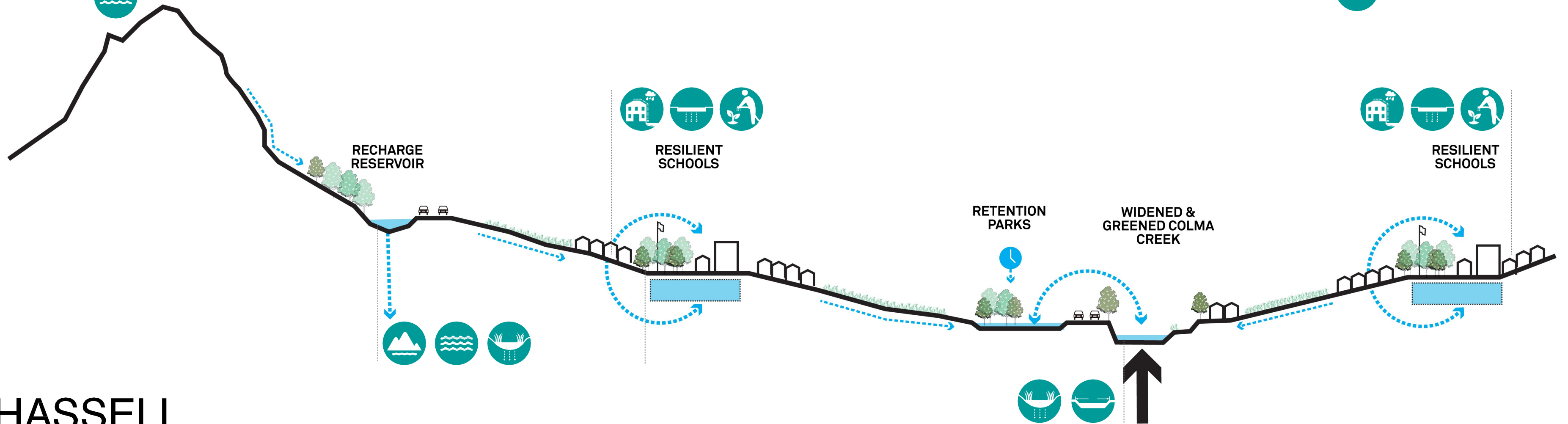
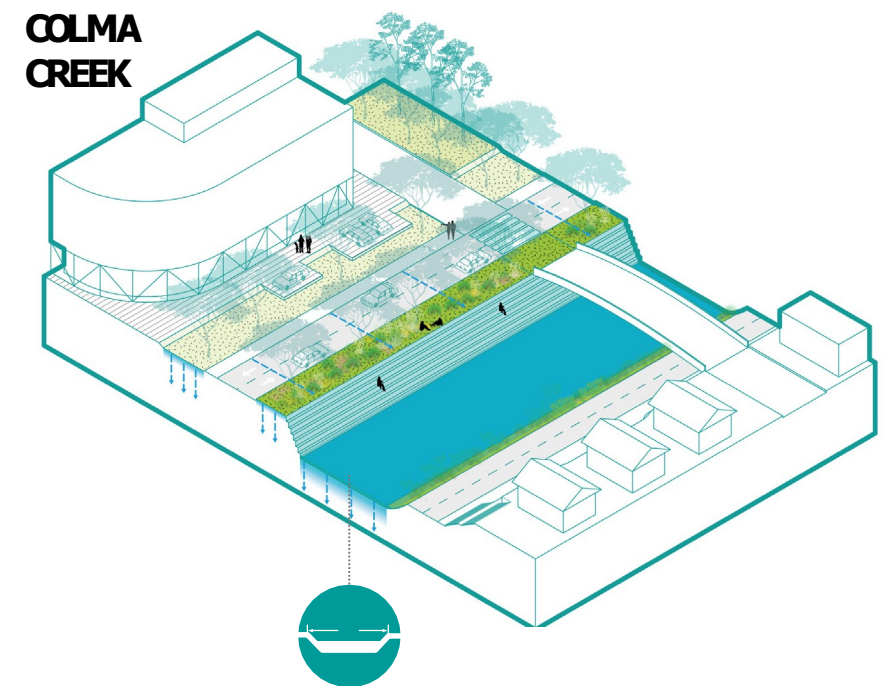
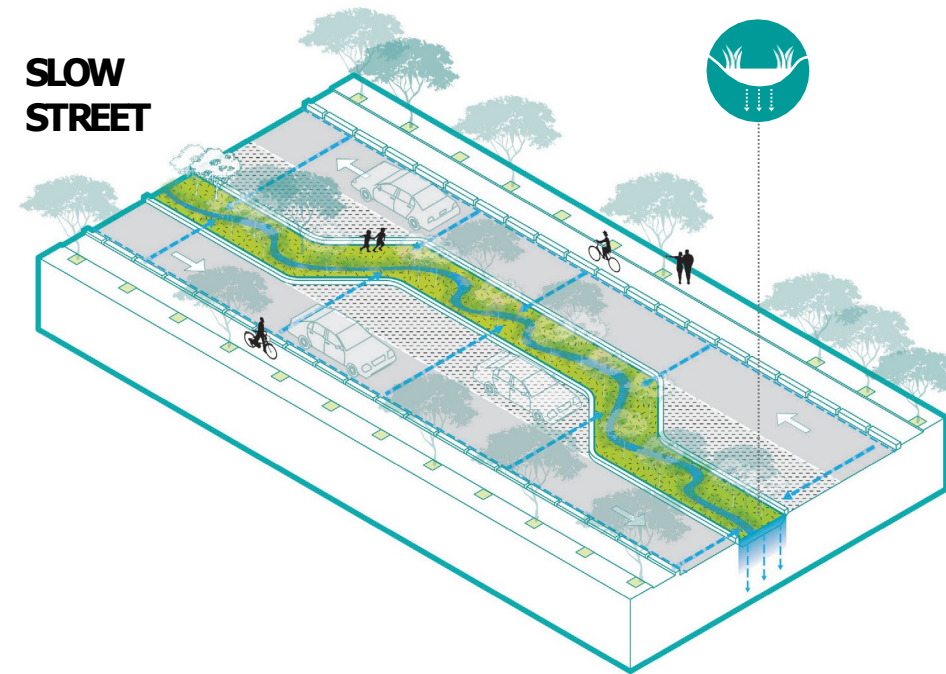
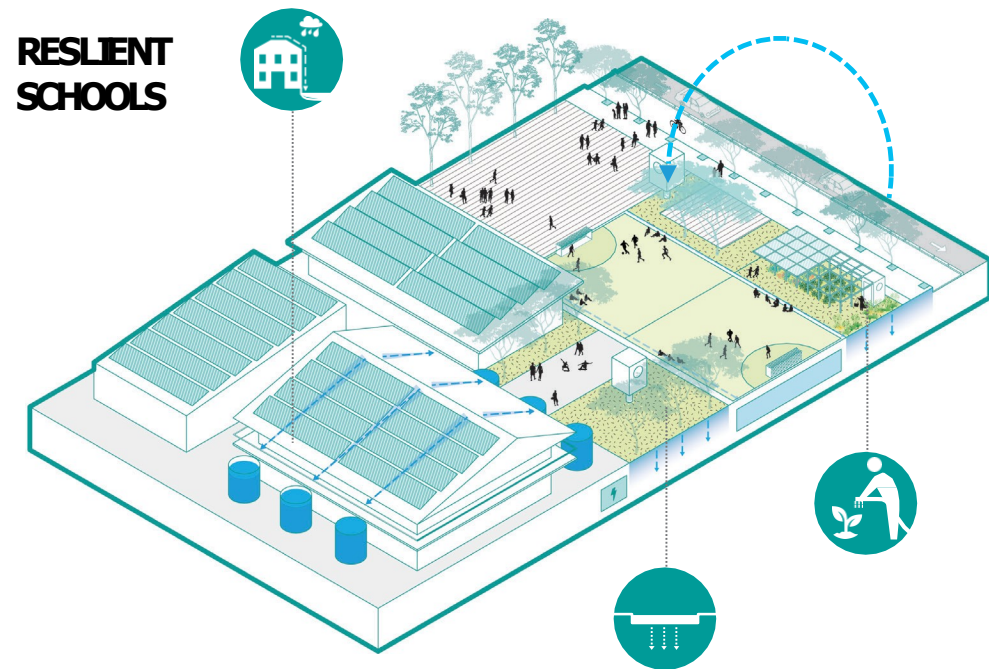
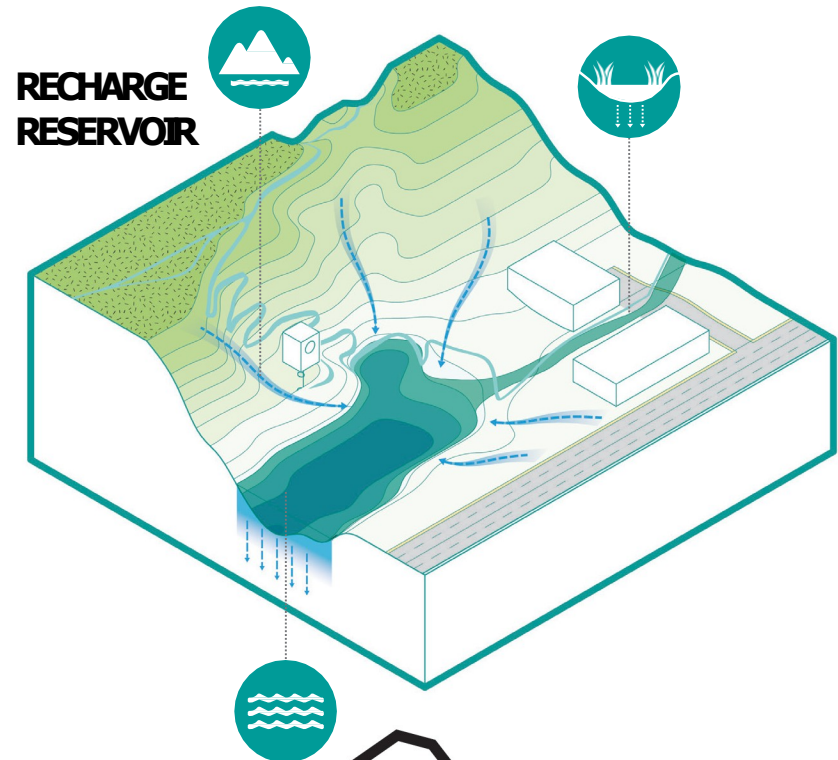


# "COLLECT & CONNECT" RESILIENT SOUTH CITY





# WATER



# HASSELL



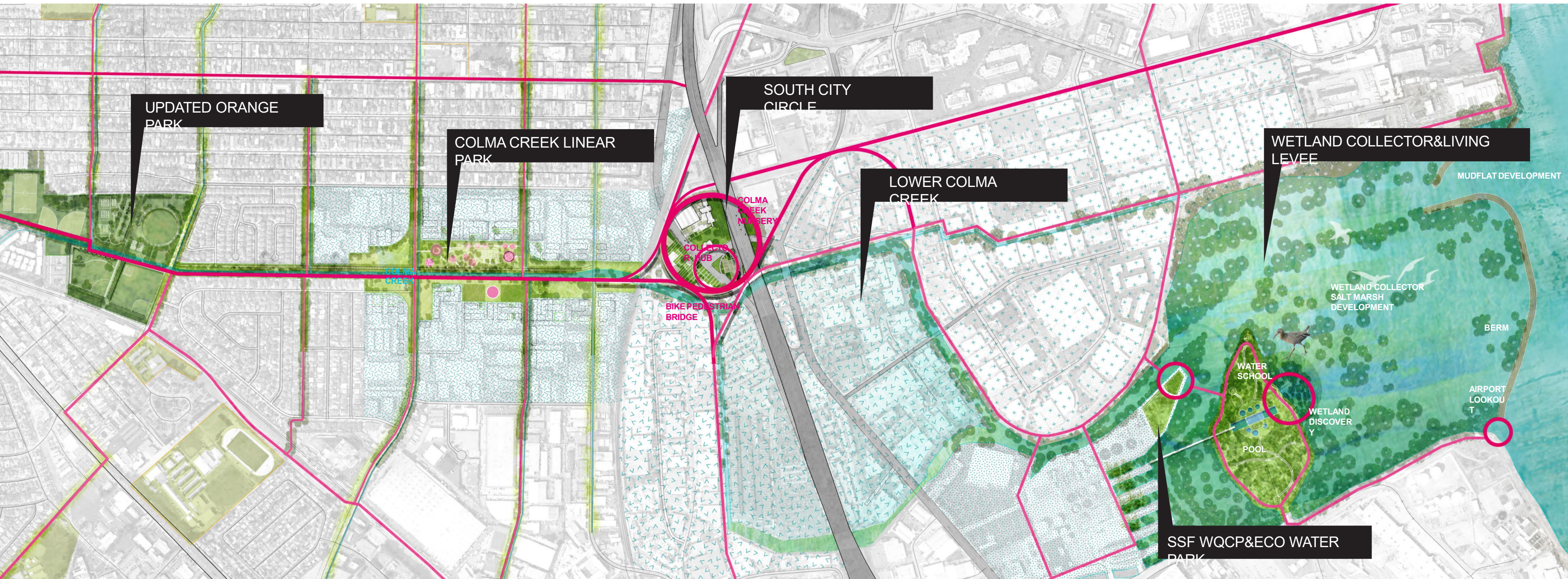








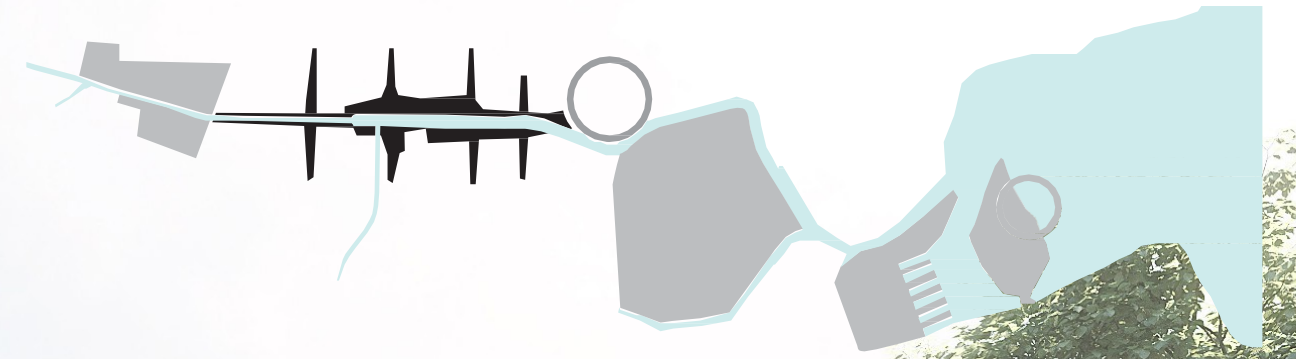
# COLMA CREEK MASTER PLAN



HASSELL



# “COLLECT & CONNECT” NEW COLMA CREEK & CREEK-SIDE PARKS





# “COLLECT & CONNECT” SOUTH CITY CIRCLE



HASSELL



# “COLLECT & CONNECT” SOUTH CITY CIRCLE

HASSELL





# THE BAY POOL

HASSELL





COLMA CREEK



HASSELL



# ONGOING ENGAGEMENT





# ONGOING ENGAGEMENT





**RESILIENT**

SOUTH

CITY

**HASSELL<sup>+</sup>**