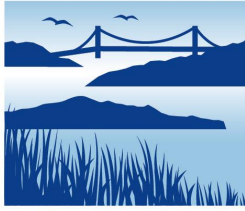




SAN FRANCISCO



ESTUARY
PARTNERSHIP

Implementation Committee

November 15, 2017
9:30 am - 12:30 pm
1515 Clay Street
Room 10, Floor 2
Oakland, CA

MEETING AGENDA

- | | |
|-------|---|
| 9:30 | 1. Welcome and Introductions
<i>Amy Hutzel, Chair</i> |
| 9:40 | 2. Public Comment |
| 9:45 | 3. Approve 05/24/17 Meeting Summary (ACTION)
(Attachment 1) |
| 9:50 | 4. Director's Report
(Attachment 2) |
| 10:05 | 5. Nominations for Chair and Vice Chair
<i>Chair</i> |
| 10:15 | 5. Estuary Blueprint Progress Report
(Attachment 3)
<i>Director</i> |
| 10:30 | Break |
| 10:45 | 7. Partnership Updates <ul style="list-style-type: none">• Water Trail Maps (Task 31-1)
<i>Ben Botkin, MTC</i>• Road Map of Funding Solutions for Sustainable Streets (Task 24-4)
<i>Matt Fabry, San Mateo County</i>• 2017 State of the Estuary Conference Highlights (Task 32-2)
<i>Karen McDowell, SFEP</i> |
| 11:45 | 8. Revised Operating Procedures (ACTION)
(Attachment 4)
<i>Director</i> |
| 12:00 | 9. IC Member Announcements |
| 12:15 | 10. Concluding Business/Meeting Road Map
(Attachment 5) |
| 12:30 | 11. Adjourn |

San Francisco Estuary Partnership
Implementation Committee Meeting
Wednesday, August 23, 2017
1515 Clay Street, Oakland

MEETING SUMMARY

1. Welcome and Intro

Amy Hutzal, Chair, called the meeting to order, and each member introduced themselves.

2. Public Comment

There were no public comments

3. Approve 5/24/17 Meeting Summary

The May 24, 2017 Meeting Summary was approved. Motion to approve by Pat Eklund, seconded by Barbara Salzman. Motion carried

4. Director's Report

Caitlin Sweeney highlighted several items from the Director's Report

New Website

Showcases the Estuary Blueprint, with the four goals and projects listed underneath. Revised to be more user-friendly and be more user-friendly

Sewer Lateral Repair Report

Research and report on sewer lateral ordinances completed over the summer, focusing on one of the Blueprint tasks. Members discussed and supported distributing to cities and sanitary districts.

SFEP Hosing CA Sea Grant Fellow

SFEP will be hosting a student from the Sea Grant State Fellowship for 'on the job' experience in marine/coastal resource policy work. This supports Action 2, Regional Monitoring Program.....

Resilient By Design

Amy gave an update on the shoreline resilience design challenge. Ten teams have been selected by the jury. The collaborative research starts soon including site visits, with submittal of concepts to follow. Teams will work with communities, local governments, etc. and the ten completed designs will be unveiled in May.

SFEP Communications Plan

SFEP developing a new communications plan beginning in October. Interested IC members invited to contact Darcie (darcie.luce@sfestuary.org).

New IC Members

Listed in the Agenda. Eleven new members, welcome to all.

5. Estuary Blueprint Presentation Template

Staff gave an overview of the Blueprint, reviewing goals, recent success stories, and ways to get involved. Feedback from IC members will be incorporated and sent out. Suggestion to include in slide show why we're doing the work and give context, particularly to a broader audience, as well as how to get involved at the local level. Suggestion to be less nuts-and-bolts and include local examples. Importance of communication plan stressed.

6. Estuary Blueprint Progress

Review of the tracking document. Five 2017 Tasks completed. SFEP staff will be bringing some of the more challenging tasks to the IC. Suggestion to include a more comprehensive overview of progress on Tasks and Actions once a year or so. Challenge is balancing internal/external communication, level of detail, amount of staff work vs. ability of members to use that info. Suggestion to identify Tasks that are not progressing and how the IC addresses these.

7. Partnership Update

Healthy Watersheds, Resilient Baylands Project

Darcie Luce, SFEP

Erica Spottswood (SFEI)

Scott Dusterhoff (SFEI)

Overview of a cluster of projects covering watershed improvement, urban greening, tidal wetland restoration, and regional resource development. Goal is to develop integrated multi-benefit actions that support healthy watersheds and resilient baylands. Review of regional strategy development, understanding the benefits, and how these guide the implementation. Tidal wetland restoration piece looks at sediment supply and demand to assess bayland

resilience. Suggestion to include some other stakeholders. Also question on how to have IC engaged on a deeper level on projects.

State of the Estuary Conference

Karen McDowell, SFEP

Program being finalized, and registration opening shortly. Trying to highlight the Blueprint at the conference. Poster session is the first night. Collecting final sponsorships.

8. Draft Revised Bylaws

Operating procedures that have been revised over time, with updates in 2011. Goal is to streamline and add anything missing. One new item is what to do between IC meetings if we need a vote. Suggestion to add to H to add a time period required. This will be sent out for comments. Suggestion to rename to Operating Procedures. Suggestion to include how to get an item on the agenda. Suggestion to include introduction/purpose of IC, NEP, and a 'Wait, why am I talking?' Question on communication between with primaries and alternates. Question on alternate voting rights and inclusion of rules of order. Suggestion on clarifying one vote per organization.

10. Concluding Business / Meeting Road Map

Proposed alternating meetings between San Francisco and Oakland. Next meeting will solicit nominations for Chair and Vice Chair. Reviewed potential meeting discussion ideas. Suggestion on having IC members discuss strategic Action areas that need attention. Dyan Whyte retiring

11. Adjourn

Meeting adjourned at 12:25.

Attendees:

IC Members: Matt Fabry (SMCWPPP), Brad Paul (MTC), Rick Thomasser (BAFPAA), Steve Goldbeck (BCDC), Pat Eklund (ABAG Exec Board), Rebecca Smyth (NOAA), Leigh Sharp (NRCD), Alyson Aquino (NRCS), John Coleman (BPC), Anna Wearn (NRDC), Amy Hutzler (SCC), Tom Mumley (SFBRWQCB), Diane Ross-Leech (PG&E), Arthur Feinstein (CCCR), Michael Vasey (SFBNERR), Jenna Judge (NOAA), Debra Kustic (DC), Adrian Covert (BAC), Paula Trigueros (FoE), Michelle Selmon (DWR), Jane Lavalley (SFPUC), Barbara Salzman (Audubon), Beth Huning (SFBJV), Werner Chabot (SFEI), Luisa Valiela (EPA), Chris Barton (EBRPD), Jessica Martini-Lamb (SCWA), Melody Tovar (City of Sunnyvale), John Klochak (USFWS)

Public: Erica Yelenski – EPA

SFEP Staff: Caitlin Sweeney, Karen McDowell, Adrian Baudrimont, Darcie Luce, Josh Bradt, Natasha Dunn, Heidi Nutters

Presenters: Erica Spottswood (SFEI), Scott Dusterhoff (SFEI)



Director's Report

November 15, 2017

PROGRAM HIGHLIGHTS

2017 State of the Estuary Conference



The State of the San Francisco Estuary Conference was held October 10-11, 2017 at the Oakland Scottish Rite Center. Over 800 people attended the 2 day event, which had over 90 speakers and 190 poster presenters. The program and abstracts are available on the conference web site: www.sfestuary.org/soe, and a slide show of some of the photos of the event will also be available.

At the conference, SFEP was honored to present IC members Arthur Feinstein and Barbara Salzman with a one-time *Estuary Legacy Award*. Sam Schuchat, Executive Officer of the

Coastal Conservancy, presided over the award presentation and via video recording, Senator Dianne Feinstein acknowledged their decades-long and tireless efforts to protect Bay habitats and wildlife. Congratulations Arthur and Barbara!



In addition, several partners were the recipients of an Outstanding Environmental Project Award from the Friends of the Estuary. Please visit the [Friends webpage](#) for information on the 2017 award winners.

SF Bay Restoration Authority

The San Francisco Bay Restoration Authority (SFBRA) released its first Request for Proposals (RFP) in September, with proposals due the day of the IC meeting, November 15, 2017. The RFP, grant guidelines, a recording of the RFP webinar, and other related materials are available on the Grants tab of the SFBRA's web site: www.sfbayrestore.org. The SFBRA expects to award its first round of grants in early 2018.

Resilient By Design



The Resilient By Design (RbD) challenge is off to a fast-paced start. The 10 multidisciplinary design teams, the RbD staff, and the Research Advisory Council have toured various shoreline communities around the SF Bay, since kicking off the Collaborative Research phase in early September. This phase began with a full-day

orientation at the David Brower Center in Berkeley, where regional planners, academics, and social scientists provided an overview of SF Bay Area challenges and complexities. Over the weeks, the RbD team co-hosted week long tours of shoreline sites in the East Bay (Sept 11), North Bay (Oct 2), South Bay (Oct 16), and San Francisco (Nov 1). Included in the itineraries were informational panels of local and regional experts providing social and political context to the project opportunities. By December 8, the Research Advisory Committee will assign a site to each team. The final designs are due in the late spring of 2018, with a jury announcing the winner in May.

SFEP and Partner Responses to The North Bay Fires

While the State of the Estuary Conference was taking place, devastating wildfires were tearing through the North Bay, scorching thousands of acres of homes, businesses, farmland, and wildland and casting a smoky pall over the conference. At SFEP, our thoughts and hearts go out to our many partners in the North Bay who are dealing with the aftermath. IC members from Sonoma County Water Agency, Regional Water Quality Control Board, Point Blue Conservation Science, Napa RCD, and others have begun the work of assessing the damage of natural resources and planning for recovery. In addition, the Bay Area Air Quality Management District (BAAQMD), MTC, and ABAG supported first responders and continue to support the ongoing response effort.

Our staff and other partners like the Bay Planning Coalition and Marin Municipal Water District have contributed funds and volunteer hours to help those impacted by the wildfires. If you would like to donate, here is a list of just a few of the organizations accepting online donations:

[Red Cross](#) (Select “California wildfires” from the dropdown menu)

[City of Santa Rosa](#) (in partnership with the United Way)

[Redwood Credit Union Community Fund](#) (in partnership with Senator Mike McGuire and others)

NEW FUNDING

Wetlands Regional Monitoring Program Plan

SFEP was recently awarded a Wetlands Program Development Grant by EPA Region 9 to develop a Wetland Regional Monitoring Program (WRMP) Plan for the San Francisco Bay. Key partners on the grant include SFEP, SFEI, the San Francisco Bay National Estuarine Research Reserve, EPA Region 9, CA Department of Fish and Wildlife and the San Francisco Bay Regional Water Quality Control Board. Over the 18 month period, the core team will convene a Steering Committee from a diverse array of experts on wetlands, community engagement and monitoring. The Steering Committee will focus their efforts on identifying the key management questions that will inform a monitoring program, critical data needs and finally, programmatic and funding options for a WRMP. To learn more about the project, go to www.wrmp.org.

COMPLETED PROJECTS

Water Trail Maps



SFEP is pleased to announce the completion of a series of interpretive and public access maps encompassing San Francisco and Suisun Bays. These maps, completed in partnership with the San Francisco Bay Area Water Trail, are part of an outreach effort meant to educate non-motorized small boaters on boating safety, environmental processes and ethics, and Water Trail launching and landing facilities. The Water Trail has also completed a new mobile-friendly website that encourages stewardship of Bay resources and provides the information boaters need to plan for a fun and safe day of adventure on the Bay. SFEP provided funding and worked with partners to create the environmental interpretive information found on the map and the website. The maps were also made with support from the State

Coastal Conservancy and a generous grant from the North Bay Watershed Association. More information can be found online at www.sfbaywatertrail.org.

Transition Zone Methodology

We are excited to announce release of a new report on mapping the transition zone, entitled “Mapping the Transition Zone: Integrating the Upper Boundary and Bay Margin Methods”. The project team included Brian Fulfroast, and staff from the San Francisco Bay Joint Venture (SFBJV), San Francisco Estuary Institute (SFEI) and SFEP. The Task Force considered key management questions and map uses, as well as ideas for regional mapping methodology of existing and potential transition zone. Subsequent Task Force meetings considered the 2015 Baylands Habitat Goals Science Update’s recommended use of distinct and overlapping ecosystem-based subzones, key audiences, and review of existing (the Bay Margin) and emerging mapping (the Upper Boundary) methodologies. The work of the task force was to clarify and refine how these methodologies overlap, and how they are different so that intended users can better navigate the two approaches. More information, including a link to the report, can be found at: <http://www.sfestuary.org/vision/>.

Integrated Regional Water Management (IRWM) Grants funded under California Proposition 84 Bond Funds via the Department of Water Resources

Four additional projects have been completed: two from Round 2 and two from Round 3, making a total of ten projects completed out of the total of 36 projects under IRWM Rounds 2, 3 & 4.

Round 2

1. Regional Groundwater Storage and Recover Project Phase 1A: South Westside Basin, Northern San Mateo County

Project Sponsor: San Francisco Public Utilities Commission

This Project constructed 6 groundwater wells and treatment systems in Daly City, Colma and South San Francisco as part of SPUC’s effort to install a total of roughly 13 – 16 groundwater wells, key components of SFPUC’s Water System Improvements. Together

these wells will store up to 60,500 acre-feet in the South Westside Groundwater Basin; a capacity that will provide approximately 7.5 years of water during drought years.

2. Lagunitas Creek Watershed Sediment Reduction and Management Project

Project Sponsor: Marin Municipal Water District

Tasked with replacing 3 failing culverts to reduce stream sedimentation as well as enhancing salmonid habitat, due to extensive permitting requirements and the significant increase in construction costs, only one culvert was replaced at Jewell Creek as part of this Project. The Jewell Creek culvert was prioritized because it would reduce stream sedimentation by 2,495 cubic yards, greater than the other two culverts combined.



New Culvert Outfall Erosion Stabilization

Round 3

3. DERWA Phase 3 Recycled Water Expansion Project

Project Sponsors: Dublin-San Ramon Services District and East Bay Municipal Utility District

This Project constructed nine miles of recycled water pipelines throughout Central and West Dublin and San Ramon Valley, which will make possible the replacement of approximately 867 acre feet per year of potable water with recycled water.

4. Sunnyvale Continuous Recycled Water Production Facilities and Wolfe Road Pipeline Project

Project Sponsor: Santa Clara Valley Water District

This Project installed a new recycled water pipeline and implemented improvements at the Sunnyvale Water Pollution Control Plant to offset approximately 1,680 acre feet per year of potable water demand and improve water quality.



Sunnyvale Upgraded Treatment Plant

OUTREACH

Estuary Blueprint Template Presentation Available

At the August 23 IC meeting, Heidi Nutters presented a draft template presentation of the Estuary Blueprint for IC members to use. Feedback from that meeting has been incorporated into a revised version of the presentation template and it is now available! The 17-slide presentation includes speaker notes and can be modified as needed for various uses and audiences. The presentation template in Google Slides can be accessed via [this link](#), or SFEP staff can email you a 7MB PowerPoint version of the presentation upon request. A copy of the slides with notes is included in the Director's Report.

Estuary News



The September issue of Estuary News explores historic places in the Delta, discusses options for keeping Highway 37 dry and surrounding habitats wet, and reports on Bay Area preparations for drought and sea level rise. Other stories cover key purchases in watershed headwaters, new non-lethal techniques for testing sturgeon for selenium, and the 25th anniversary of the RMP.

[Explore the September issue online.](#)

Clean Vessel Act Program

The CVA program continues to work with local, state, and national partners in their efforts to decrease sewage discharge into the San Francisco Bay and Sacramento-San Joaquin Delta. Three staff traveled to the annual States Organization for Boating Access conference in Anchorage, Alaska to give two presentations and to represent California in the Federal Training Workshop that provided focused feedback on federal guidelines for the CVA program. SFEP presented on the newly developed Pumpout Nav mobile app and the California Pumpout Report released earlier this year. SFEP also attended the Marine Recreation Association and the California Association of Harbormasters and Port Captains conferences in Monterey and Oakland, respectively. Staff presented on the Pumpout Nav app and demonstrated the app in the exhibitor section. SFEP is pleased to announce that the app is currently in phase II of development that will streamline all reporting and admin processes for the app and the associated database. This work is expected to be completed by the end of the year.

PROGRAM MANAGEMENT

California Sea Grant Fellow Matched!

Heidi Nutters and I attended a two-day California Sea Grant Fellow “matching workshop” in Sacramento in October, where we interviewed 23 Sea Grant finalists. I am pleased to announce that as a result of that process we have been matched with Ian Kelmartin. Ian is finishing up his Master’s in Fisheries Biology from Humboldt University. He has extensive experience in research, data management and analysis, and outreach. We are looking forward to Ian joining the SFEP team on February 5, 2018 for one year to help advance the Wetlands Regional Monitoring Program effort as well as other SFEP projects and programs.



West Coast NEP Meeting



On October 26, EPA Region 9 hosted a meeting of all the West Coast NEP directors (Puget Sound, Lower Columbia, Tillamook, San Francisco, Morro Bay, and Santa Monica Bay) and the EPA staff from the regions that work with those NEPs. The meeting objective was to advance NEP effectiveness by elevating support for and among West Coast NEPs and EPA Regions 9 and 10, share information

and innovations, and identify needs and opportunities. Meeting topics included: development and tracking of CCMPs, monitoring and science, climate change, and public engagement. Joining the beginning of the meeting via video from Washington DC was Surabhi Shah, EPA Partnership Programs Branch Chief.

NEP Fall Tech Transfer Conference

Darcie Luce and I attended the 2017 NEP Tech Transfer Conference in Boston in November. The 3-day conference included representatives of most of the 28 NEPs as well as EPA headquarters staff and covered topics of mutual interest to all the NEPs including economic valuation, measuring progress, reaching underserved communities and populations, science and monitoring, innovations in NEP operations, restoration, and communications. EPA Partnership Programs Branch Chief Surabhi Shah opened the meeting by expressing her admiration for the NEPs and optimism for EPA's work with the NEPs going forward.



ABAG/MTC Consolidation Update

The Partnership is scheduled to move to the MetroCenter (at 375 Beale Street in San Francisco) in early January, 2018. The IC's first meeting of 2018, March 7, will be held at the MetroCenter.



Estuary Blueprint

32 Actions for a Healthy Estuary



A regional collaborative blueprint for the future of the Estuary

*Where do we want to be in 2050 and what can we do in the
next five years to get there?*



- The 2016 Estuary Blueprint (or CCMP) Revision is a pragmatic 5-year plan for the Estuary based on visionary goals for the future.
- In taking this approach, we are able to set achievable actions every five years to support a broader vision for health of the Estuary



How Healthy is the Estuary?

- Upper Estuary (Suisun Bay and Delta) is in **fair to poor condition and getting worse**, while the lower Estuary (San Francisco Bay) is in **better health but jeopardized by climate change**.
- Human activities have severely altered physical processes such as freshwater flows and sediment movement.
- Impairment is intertwined with habitat loss, degradation, and fragmentation contributing to unproductive food webs, smaller and declining fish and wildlife populations and dominance of invasive species.



These findings come from the 2015 State of the Estuary Report which reports on the health of the estuary across number scientific indicators of health.



Can We Improve the Health of the Estuary?

- The 2015 State of the Estuary Report suggests that we can if we choose to make the investment
- Gains have already been made on water quality, tidal marsh restoration and wildlife populations.
- Climate change jeopardizes the health of all parts of the Estuary



These findings come from the 2015 State of the Estuary Report which reports on the health of the estuary across number scientific indicators of health.



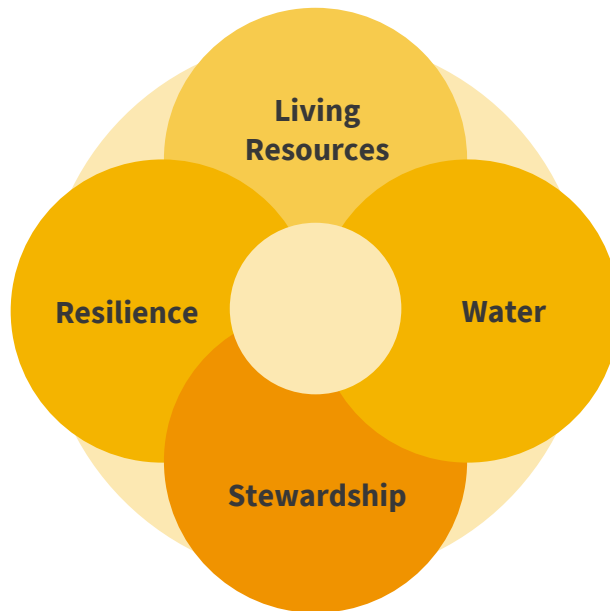
What Will It Take to Achieve a Health Estuary?





- Investment in restoring critical physical processes and habitats
- Greater efficiencies in human use of the system's freshwater
- Watershed-based regional approach to managing sediment and freshwater for tidal wetlands
- Habitat connectivity in light of climate change for wildlife conservation
- Collaboration, adaptation, flexibility and resilience

These findings come from the 2015 State of the Estuary Report which reports on the health of the estuary across number scientific indicators of health.

Driven by Four Key Goals



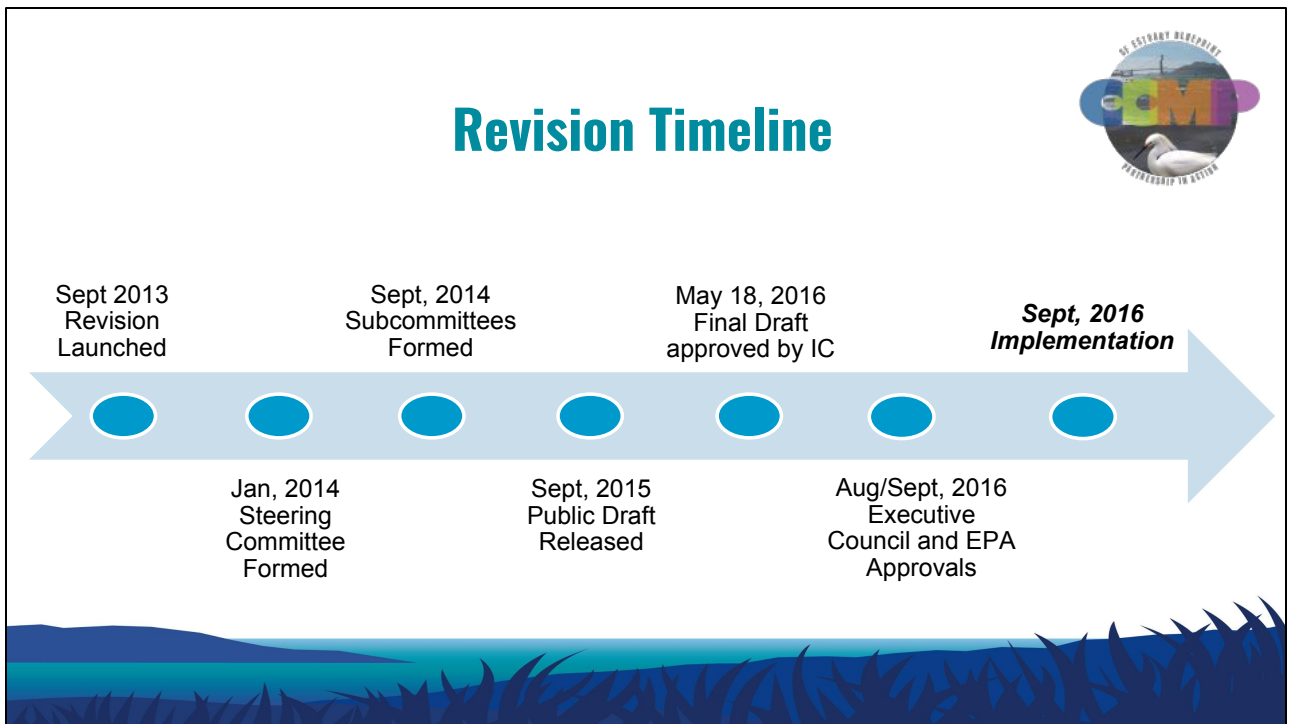
- The San Francisco Estuary Partnership is one of 28 National Estuary Programs across the Country
- Each National Estuary Program is required to update their CCMP every five years
- We call our CCMP "The Estuary Blueprint"
- The first CCMP in the San Francisco Estuary was in 1993, and the 2016 CCMP (or Estuary Blueprint) represents a major overhaul of the Plan

Goals

- Sustain and improve the Estuary's habitats and living resources.
- Bolster the resilience of Estuary ecosystems, shorelines, and communities to climate change.
- Improve water quality and increase the quantity of fresh water available to the Estuary.
- Champion the Estuary.

- The four goals of the Estuary Blueprint were selected by stakeholders
- The 32 Actions in the Estuary Blueprint are cross-cutting and are designed to support multiple goals
- The actions range on topics within these goals. To find out more, check out the website <http://www.sfestuary.org/ccmp/>



- The Estuary Blueprint Revision process was launched in September 2013
- The process included extensive stakeholder involvement of a broad range of organizations from the upper and lower Estuary (SF Bay & Delta)
- A final draft was approved by the San Francisco Estuary Partnership Implementation Committee (or IC) in May 2016
- Stakeholders moved into implementation in September 2016



Credit: Darcie Luce



There are 32 Actions in the Estuary Blueprint that span the goals described previously. Recently, at the State of the Estuary Conference in October 2017, artist Cristina Victor created a visual representation of these 32 Actions. The 32 Actions are intended to be implementable within the 5-year span of the Blueprint.

“The CCMP catalyzes the work of others -- setting goals, defining actions, and aiding in efforts to collaborate among multiple agencies and organizations”

Amy Hutzel - Coastal Conservancy



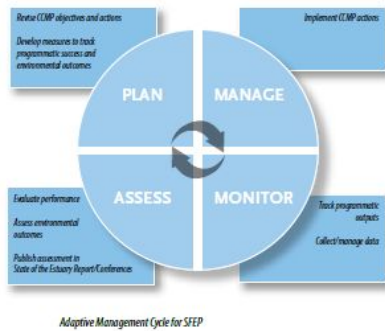
“The CCMP is the framework for conservation of the San Francisco Estuary into the future”

Mike Vasey - SF Bay National Estuarine Research Reserve



- These quotes are from two San Francisco Estuary Partnership Implementation Committee members who were involved in adoption of the Estuary Blueprint
-

Implementation



Over 80 agencies, non-profits, businesses and Universities are involved in completion of tasks

You can follow progress on any of the 32 Estuary Blueprint Actions at our website!

- Now that we are in the implementation phase of the Estuary Blueprint, over 80 organizations are working to complete the 32 Actions within the Plan
- The new SFEP website includes a number of tracking tools to see progress on Actions

Wetland restoration IS working!



Many partners around the Estuary help to implement key Actions in the Estuary Blueprint, to **restore living resources and improve habitats** including:
Action 3, 4, 5, 6, 7, and 8.

Thanks to our partners at the San Francisco Bay Joint Venture for producing this video!

Restoring and enhancing living resources is one focus area of the Estuary Blueprint. Actions 3-8 focus on tidal marsh and tidal flat, transition zones, intertidal and subtidal, managed wetlands and ponds, riparian and in-stream and finally seasonal wetland habitats. This video is one in a series developed by the San Francisco Bay Joint Venture focusing on successful wetland restoration projects around the Estuary.

Success Stories

Delta Conservancy Awarded for New Carbon Methodology



In April 2017, the [American Carbon Registry](#) presented the Innovation Award to the [Delta Conservancy](#) and its partners for the development of a landmark carbon offset methodology to quantify greenhouse gas emission reductions from the restoration of wetlands in the Delta and along the California coast.



Levees and subsided farmland in the Delta
Photo: Department of Water Resources

Completion of methodology marks implementation of
[Estuary Blueprint](#) Task 11.3

- Project staff have developed a number of success stories that can be found on the website
- This success stories covers completion of a new carbon methodology to quantify greenhouse gas emissions reductions from the restoration of wetlands in the Delta and along the CA coast
- The science-based methodology combines data and restoration techniques to create a carbon offset project development framework which can be used to seek funding for restoration or habitat enhancement projects
- You can read the full success story at the Estuary Blueprint website

Success Stories

Climate Change and Community Built into Dotson Family Marsh



View of San Pablo Bay from the newly dedicated
Dotson Family Marsh
Photo: EBRPD

After decades of efforts to protect a critical part of the Richmond shoreline, the East Bay Regional Park District recently celebrated the official dedication of the Dotson Family Marsh and Atlas Road Bridge at Point Pinole Regional Shoreline.

**This innovative planning advances
Tasks 4.4 and 31.2 of the [Estuary Blueprint](#)**

- This success story completes Task 4.4 and 31-2 of the Estuary Blueprint
- Dotson Family Marsh, formerly known as Breuner Marsh, is a 150-acre site near Pt. Pinole in San Pablo Bay. Parchester Village residents in Richmond have passionately fought for decades for its protection, restoration and for public access.
- You can read the full success story at the Estuary Blueprint website

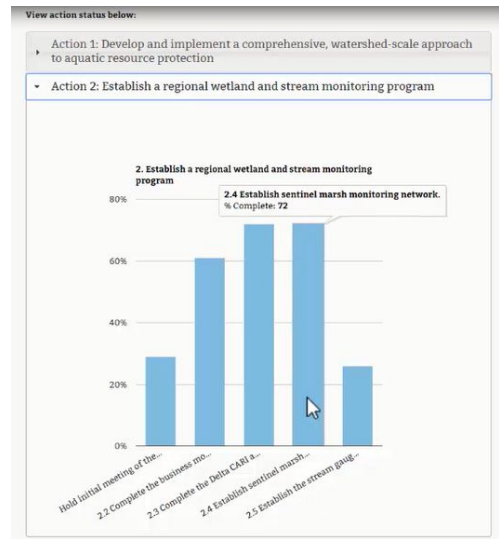
Success Stories

[Add additional success stories here]



sfestuary.org/ccmp/

- Funding Analysis
- Progress Tracker
- Success Stories
- Sign up for our Quarterly Newsletter



- The website has lots of resources for getting more involved with tracking and following Estuary Blueprint implementation
- There are a number of interactive tools to help you see progress, understand the Actions and read more



Get Involved!

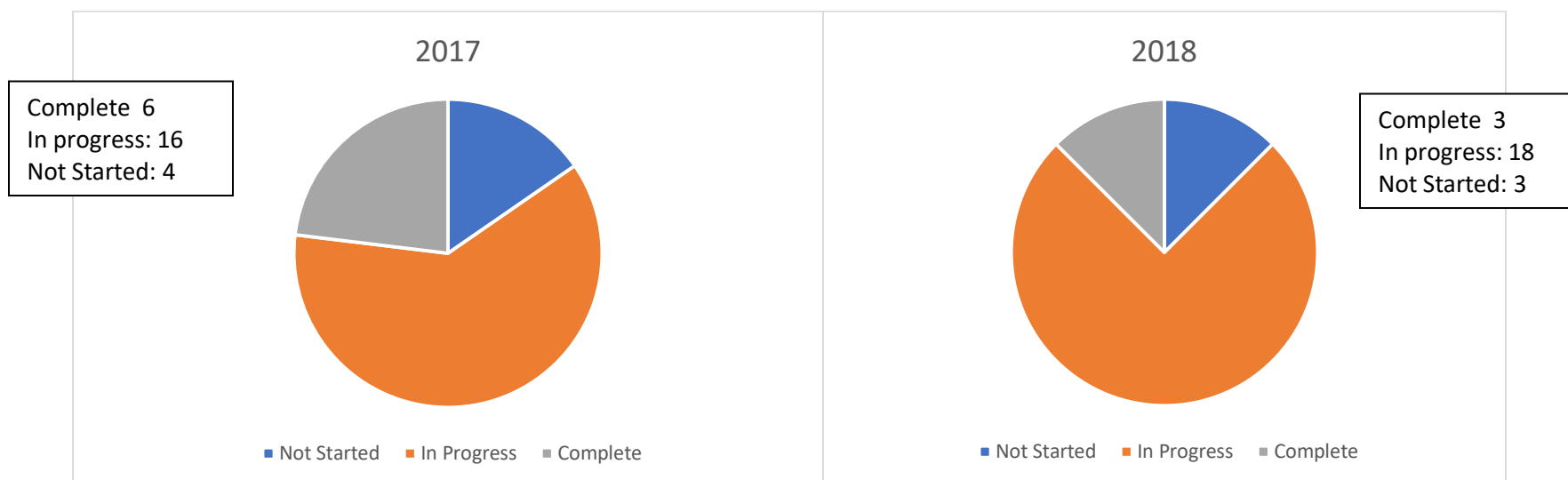
- Collaborate with SFEP staff on covering your Estuary Blueprint-related projects in a success story
- Sign up for our quarterly newsletter
- Track implementation of Actions



- There are several ways to get more engaged with the Estuary Blueprint
- SFEP staff can help to develop a success story on one of your projects that links to the Estuary Blueprint
- There is a quarterly newsletter with more information
- You can track implementation of actions



Estuary Blueprint 2017 and 2018 Task Status Updates November 15, 2017



Estuary Blueprint 2017 and 2018 Task Status Updates

2017 Tasks

Action Name	Task #	Task Description	Milestone	% Complete	Owner	SFEP Contact
Develop and implement a comprehensive, watershed-scale approach to aquatic resource protection	1.1	Develop a written framework that explains the need for watershed-based aquatic resource protection; frames an approach to meet this need; and identifies and incorporates supporting technical tools and policies. The framework should also address relevant regulatory and governance issues	Complete framework.	50	SFEI	Josh Bradt josh.bradt@sfestuary.org
Identify, protect, and create transition zones around the Estuary	4.1	Develop a regional steering committee and technical advisory committee to guide a bay-wide, science-based, inventory of existing and projected future transition zones. Base the inventory on current baylands restoration projects, land use, ownership, topography, elevation, and other criteria consistent with climate change adaptation science and regional, state, and federal agency initiatives.	Establish transition zone inventory steering and technical advisory committees.	100	SFBJV, SFEP	Heidi Nutters heidi.nutters@sfestuary.org
Protect, restore, and enhance seasonal wetlands	8.1	Re-establish the Interagency Vernal Pool Stewardship Initiative among state and federal agencies. Build relationships through the Initiative with land trusts and conservancies, landowners, Resource Conservation Districts, and municipalities to coordinate planning efforts.	Re-establish the Vernal Pool Stewardship Initiative.	0	SFEP	Caitlin Sweeney caitlin.sweeney@sfestuary.org
Restore watershed connections to the Estuary to improve habitat, flood protection and water quality	12.2	Advance a multi-benefit project in the Yolo Bypass by establishing a common vision for improvements supported by local, state, and federal agencies.	Initiate construction of multiple fish passage improvement projects within the Yolo Bypass.	50	DWR	Adrien Baudrimont adrien.baudrimont@sfestuary.org

Action Name	Task #	Task Description	Milestone	% Complete	Owner	SFEP Contact
Manage sediment on a regional scale and advance beneficial reuse	13.1	Strengthen Long Term Management Strategy (LTMS) policies on the beneficial reuse of dredged material by expanding programs such as "SediMatch." Resolve logistical issues in matching sediment supply from dredging projects and upland construction sites with habitat restoration and shoreline adaptation projects.	Expand and improve SediMatch.	65	BCDC, SF Bay JV, SFEI	Adrien Baudrimont adrien.baudrimont@sfestuary.org
Manage sediment on a regional scale and advance beneficial reuse	13.2	Identify funding to pay for the additional costs of dredged materials disposal beyond "least-cost" options, including costs for offloaders to pump sediment for beneficial reuse projects on Estuary shorelines.	Identify and secure funding.	0	SF Bay Joint Venture	Adrien Baudrimont adrien.baudrimont@sfestuary.org
Manage sediment on a regional scale and advance beneficial reuse	13.4a	Advance understanding of how the creation of sandy beaches and their replenishment provides multiple benefits in terms of ecosystem health, shoreline erosion control, and sea level rise adaptation. Create (or enhance an existing) monitoring tool to identify potential sites for sandy beach creation or replenishment projects, choose pilot project sites, and track progress. Provide information about the benefits of sandy beaches to regulators and the restoration community.	Release the monitoring and tracking tool.	0	SF Bay JV	Adrien Baudrimont adrien.baudrimont@sfestuary.org
Demonstrate how natural habitats and nature-based shoreline infrastructure can provide increased resiliency to changes in the Estuary environment.	14.1	Develop a primer on how bayshore projects can be designed and optimized to achieve multiple rather than single benefits. Challenge designers and planners to look beyond a primary objective and find opportunities to incorporate not only flood protection but also habitat enhancement and recreational access, among other objectives, in proposed projects.	Develop primer and implement outreach strategy for primer.	10	SFEI, SFEP	Adrien Baudrimont adrien.baudrimont@sfestuary.org
Advance natural resource protection while increasing resiliency of shoreline communities in the Bay Area	15.2	Integrate resiliency and natural resource protection into Plan Bay Area. Lay the groundwork for a more comprehensive regional resiliency effort.	Complete resiliency section in the 2017 update of Plan Bay Area.	75	BARC, SCC	Heidi Nutters heidi.nutters@sfestuary.org

Action Name	Task #	Task Description	Milestone	% Complete	Owner	SFEP Contact
Integrate natural resource protection into state and local government hazard mitigation, response, and recovery planning	16.1	Establish and implement innovative approaches for integrating natural resources into hazard mitigation, response and recovery planning in the Delta.	Complete the Delta Levee Investment Strategy.	100	Delta Stewardship Council	Heidi Nutters heidi.nutters@sfestuary.org
Improve regulatory review, permitting, and monitoring processes for multi-benefit climate adaptation projects	17.3a	Analyze current San Francisco Bay Regional Water Quality Control Board regulations and policies governing the permitting of multi-benefit projects designed to address sea level rise. Develop findings, alternatives, and recommendations to support the Board's evaluation of baylands climate adaptation projects. Address concerns about balancing long-term wetlands protection, restoration, and enhancement against short terms losses in ecosystem function.	Complete report with recommendations.	70	SF Bay Regional Board	Adrien Baudrimont adrien.baudrimont@sfestuary.org
Improve regulatory review, permitting, and monitoring processes for multi-benefit climate adaptation projects	17.3b	Analyze current San Francisco Bay Regional Water Quality Control Board regulations and policies governing the permitting of multi-benefit projects designed to address sea level rise. Develop findings, alternatives, and recommendations to support the Board's evaluation of baylands climate adaptation projects. Address concerns about balancing long-term wetlands protection, restoration, and enhancement against short terms losses in ecosystem function.	Revised policies as necessary.	0	SF Bay Regional Board	Adrien Baudrimont adrien.baudrimont@sfestuary.org
Improve regulatory review, permitting, and monitoring processes for multi-benefit climate adaptation projects	17.4	Bring major permitting and regulatory agencies together with project implementers and other key stakeholders in workshops to facilitate the creation of a more transparent and predictable system for the review and approval of multi-species and multi-benefit projects over the long-term. Design a model process and overall system that reduces time and conflicts while also outlining a roadmap for those entering into this process for the first time.	Institute a once or twice yearly workshop.	5	Coastal Hazards Adaptation Resiliency Group	Adrien Baudrimont adrien.baudrimont@sfestuary.org

Action Name	Task #	Task Description	Milestone	% Complete	Owner	SFEP Contact
Improve the timing, amount, and duration of freshwater flows critical to Estuary health	18.1	Work with partners to disseminate a report highlighting the contribution of freshwater flows to the health of the lower Estuary, San Francisco Bay.	Disseminate report.	100	SFEP	Darcie Luce darcie.luce@sfestuary.org
Develop long-term drought plans	19.1	Fund an assessment that analyzes which retail and wholesale water supply agencies around the Estuary have long-term water supply plans for five to 10 year drought.	Complete assessment.	90	SFEP	Darcie Luce darcie.luce@sfestuary.org
Expand the use of recycled water	22.1	Promote existing outreach activities educating the public about recycled water. Encourage the sharing of informational materials, resources, and program models among municipalities, wastewater agencies, and drinking water agencies.	Develop platform for sharing resources	5	BACWA, SFEP	Darcie Luce darcie.luce@sfestuary.org
Integrate water into the updated Plan Bay Area and other regional planning efforts	23.2	Incorporate water and San Francisco Bay related issues into the Plan Bay Area 2017 update. Consider ways to reduce per capita water use and optimize water recycling in the update, as well as issues such as landscape water use, water quality, stormwater management (low impact development and green infrastructure), and drought preparedness.	Complete an update of Plan Bay Area.	100	SFEP, ABAG	Josh Bradt josh.bradt@sfestuary.org
Manage stormwater with low impact development and green infrastructure	24.1	Develop outreach materials on lessons learned and the current state of LID benefits knowledge.	Develop materials.	100	SFEP, EPA	Josh Bradt josh.bradt@sfestuary.org
Manage stormwater with low impact development and green infrastructure	24.2	Improve the San Francisco Estuary Institute's LID tracking tool "GreenPlan-IT." Enhance all components of the LID planning tool, "GreenPlan-IT."	Complete refined GreenPlan-IT.	95	SFEP, EPA	Josh Bradt josh.bradt@sfestuary.org
Decrease raw sewage discharges into the Estuary	26.1	Review sewer lateral repair ordinances currently in operation around the region, and target 30 percent of the uncovered jurisdictions for assistance in developing and passing sewer ordinance modeled on existing ordinances.	Complete review and identify jurisdictions.	95	SFEP	James Muller james.muller@sfestuary.org

Action Name	Task #	Task Description	Milestone	% Complete	Owner	SFEP Contact
Decrease raw sewage discharges into the Estuary	26.4a	Develop a mobile app for boaters to report broken pumpouts, and for marinas to report pumpout use and operational status; pilot a mobile pumpout program for marinas and recreational boaters in the Oakland Estuary. Install 10 new dockside pumpout systems in marinas to increase the size and availability of the pumpout network.	Launch application and pilot program.	85	SFEP	James Muller james.muller@sfestuary.org
Decrease raw sewage discharges into the Estuary	26.5	Work with the Bay Area Pollution Prevention Group (BAPPG) to identify new audiences for outreach messages about reducing non-flushable items to sanitary sewers to reduce sanitary sewer overflows	Identify new audiences.	50	SFEP	James Muller james.muller@sfestuary.org
Implement Total Maximum Daily Load projects in the Estuary, including projects to reduce mercury, methylmercury, pesticides and areas of low dissolved oxygen	27.1	Develop and implement a multi-media outreach campaign aimed at reducing household indoor and outdoor pesticide use.	Complete final report on outreach campaign.	100	SFEP	James Muller james.muller@sfestuary.org
Advance nutrient management in the Estuary	28.1	Secure additional funding to ensure continuation of long-term monitoring of nutrient-related parameters in the Bay through the San Francisco Bay Regional Water Quality Control Board's Nutrient Management Strategy.	Secure funding and continue monitoring.	35	SF Bay Regional Board, SFEI	Karen McDowell karen.mcdowell@sfestuary.org
Advance nutrient management in the Estuary	28.2	Undertake and fund water quality research to attain an improved quantitative understanding of San Francisco Bay's "dose response" to nutrients.	Secure funding and continue research.	35	SF Bay Regional Board, SFEI	Karen McDowell karen.mcdowell@sfestuary.org
Advance nutrient management in the Estuary	28.4	Develop a Nutrient Research Plan for the freshwater Sacramento-San Joaquin Delta through the Central Valley Regional Water Quality Control Board. Use the plan to determine whether nutrient objectives are needed to protect beneficial uses in upper Estuary.	Complete Delta Nutrient Research Plan.	70	Central Valley Regional Board	Karen McDowell karen.mcdowell@sfestuary.org

2018 Tasks

Action Name	Task #	Task Description	Milestone	% Complete	Owner	SFEP Contact
Develop and implement a comprehensive, watershed-scale approach to aquatic resource protection	1.2	Develop criteria to evaluate watersheds that could be used to pilot the Task 1-1 framework. Select a pilot watershed that drains into San Francisco Bay based on these criteria.	Complete criteria and select pilot Bay watershed	0	SFEI, SFEP	Josh Bradt josh.bradt@sfestuary.org
Establish a regional wetland and stream monitoring program	2.1	Develop and implement a Bay Area and Delta regional wetland monitoring plan that establishes separate, yet closely coordinated, steering committees for the upper and lower Estuary. The plan will identify regulatory and management monitoring priorities, as well as existing wetland, stream, or riparian monitoring efforts, to determine where there may be opportunities for partnerships and where there are gaps.	Hold initial meeting of the steering committees.	25	SF Bay JV, SF Bay Regional Board, SFEI	Heidi Nutters heidi.nutters@sfestuary.org
Establish a regional wetland and stream monitoring program	2.2	Determine how much funding is needed to support program management and administration, technology purchase and upgrades, hardware and software operations and maintenance, practitioner training, and annual data synthesis and report; develop a business model to meet these funding needs .	Complete the business model.	15	SF Bay JV, SFEP	Heidi Nutters heidi.nutters@sfestuary.org
Establish a regional wetland and stream monitoring program	2.3	Complete the California Aquatic Resource Inventory (CARI) for the Delta; complete riparian inventories for the Delta and the Bay Area; upload the inventories into the California EcoAtlas information system	Complete the Delta CARI and the Delta and Bay Area riparian inventories.	5	SF Bay JV, SFEI	Heidi Nutters heidi.nutters@sfestuary.org
Identify, protect, and create transition zones around the Estuary	4.2	Complete a regional inventory of transition zones based on the methodology developed by the technical advisory committee.	Complete Bay transition zone inventory.	25	SF Bay JV, SFEP	Heidi Nutters heidi.nutters@sfestuary.org
Protect, restore, and enhance seasonal wetlands	8.3	Develop a white paper on best practices for grazing management to protect seasonal wetlands and enhance habitat quality.	Complete white paper.	0	SF Bay JV	Caitlin Sweeney caitlin.sweeney@sfestuary.org

Action Name	Task #	Task Description	Milestone	% Complete	Owner	SFEP Contact
Increase the efficacy of terrestrial predator management	10.1a	Develop a map showing priority areas in the San Francisco Estuary where actions can be taken to reduce feral cat predation on sensitive species, particularly Ridgway's Rail. This cat predator threat assessment and opportunities map will include: 1) locations of known or suspected feral cat colonies and feeding stations; 2) identification of entity(s) maintaining each cat colony (individual, group-sanctioned, or city and county authorized activity); 3) jurisdictions of landowners with the authority and willingness to enforce the law (map to include all landowners of marshes and adjacent areas); 4) information on city and county cat-feeding station laws; 5) presence of critical Ridgway's Rail populations; and 6) extent of housing and urban development, including landfills and transfer stations.	Produce feral cat threat assessment and opportunities map	10	Point Blue, USFWS	Karen McDowell karen.mcdowell@sfestuary.org
Manage sediment on a regional scale and advance beneficial reuse	13.3	Identify funds and conduct research and monitoring to quantify all potential sediment sources to the Estuary. Determine sediment needs for maintaining current habitats under various sea level rise projections.	Complete study and share results.	30	SF Bay JV, SFEI	Adrien Baudrimont adrien.baudrimont@sfestuary.org
Demonstrate how natural habitats and nature-based shoreline infrastructure can provide increased resiliency to changes in the Estuary environment.	14.2	Develop a system for describing the variety of shorelines around the Estuary based on shoreline features, ecosystem processes, land use, and other relevant factors.	Develop shoreline typologies.	10	SFEI, SFEP	Adrien Baudrimont adrien.baudrimont@sfestuary.org
Improve the timing, amount, and duration of freshwater flows critical to Estuary health	18.2	Assist the State Water Resources Control Board in updating the San Francisco Bay/Sacramento-San Joaquin River Delta Water Quality Control Plan (Bay Delta WQCP) by providing concise, scientifically sound data to the State Board during its deliberations and by keeping the public and local officials informed.	Complete update of the Bay-Delta WQCP with updated flow objectives.	20	SFEP	Darcie Luce darcie.luce@sfestuary.org

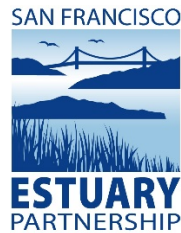
Action Name	Task #	Task Description	Milestone	% Complete	Owner	SFEP Contact
Improve the timing, amount, and duration of freshwater flows critical to Estuary health	18.3	Work with relevant partners and agencies to more broadly incorporate integrated freshwater flow and habitat messages and information in public outreach materials or relevant programs.	Add messages to the materials of at least 3 partners.	10	SFEP	Darcie Luce darcie.luce@sfestuary.org
Reduce water use for landscaping around the Estuary	21.1	Work with water supply agencies, municipalities, the California Department of Water Resources (DWR), the California State Water Resources Control Board, and others to develop a standardized approach to quantifying and reporting on water use for all new and existing landscaped areas. Use the latest available technology, as well as the methodology developed by DWR for the update 2015 MWELO, and other methods as appropriate.	Ensure standardized reporting in place.	5	SFEP	Darcie Luce darcie.luce@sfestuary.org
Reduce water use for landscaping around the Estuary	21.2	Working with the partners identified in Task 21-1, develop permanent (i.e., non-drought) performance standards against which progress in reducing landscape water use region-wide will be measured.	Ensure performance standards in place.	5	SFEP	Darcie Luce darcie.luce@sfestuary.org
Expand the use of recycled water	22.2	Collaborate with BACWA's Recycled Water Committee and others to: expand incorporation of recycled water in local and regional water resources planning processes; identify opportunities for the broader use of recycled water; overcome funding and planning gaps; and address regulatory and permitting constraints.	Hold three meetings.	5	BACWA, SFEP	Darcie Luce darcie.luce@sfestuary.org
Manage stormwater with low impact development and green infrastructure	24.3	Partner with local jurisdictions to analyze LID and GI potential in select areas using Green Plan-IT and other applicable planning tools, and integrate findings into relevant agency planning mechanisms and policies for adoption and implementation.	Complete identification and analysis.	75	SFEP, US EPA	Josh Bradt josh.bradt@sfestuary.org
Manage stormwater with low impact development and green infrastructure	24.4	Develop and promote a comprehensive regional road map that identifies key policies, documents, legislation, agencies, and specific actions needed for integrating GI with future climate change, transportation, and other infrastructure investments, including looking for opportunities to implement large regional projects.	Complete work plan.	85	SFEP, US EPA	Josh Bradt josh.bradt@sfestuary.org

Action Name	Task #	Task Description	Milestone	% Complete	Owner	SFEP Contact
Manage stormwater with low impact development and green infrastructure	24.5	Create and make available to municipalities and other interested parties design tools for LID retrofits, such as: cost-effective, low maintenance standard design details for LID retrofits of typical road configurations; unit cost estimates for both LID retrofit practices and non-LID standard street details; and "lessons learned" reports on previous grant- or local agency-funded LID retrofit projects.	Complete design tools and make available.	100	SFEP, US EPA	Josh Bradt josh.bradt@sfestuary.org
Manage stormwater with low impact development and green infrastructure	24.6	Create a GIS-based database to track completed LID and GI projects in the public and private realms; coordinate the database with Total Maximum Daily Load (TMDL) accounting systems developed by other local partners to identify and quantify the load reduction benefits of LID and GI.	Launch database.	80	SFEP, US EPA	Josh Bradt josh.bradt@sfestuary.org
Address emerging contaminants	25.2	Support the continuation and evaluate the effectiveness of the regional education program aimed at reducing or eliminating the use of triclosan and triclocarban. Evaluate tools, such as non-purchase agreements, ordinances, or inclusion as a priority product by the California Department of Toxic Substances Control, to reduce personal care products containing triclosan or triclocarban.	Complete evaluations.	100	Bay Area Pollution Prevention Group, CA PSP, SFEP	Darcie Luce darcie.luce@sfestuary.org
Decrease raw sewage discharges into the Estuary	26.2	Produce and promote a white paper that describes existing and potential funding mechanisms for residents to help pay for private sewer line repair and replacement, such as grant programs and financing strategies	Complete white paper.	95	SFEP	James Muller james.muller@sfestuary.org
Implement Total Maximum Daily Load projects in the Estuary, including projects to reduce mercury, methylmercury, pesticides and areas of low dissolved oxygen	27.2	Evaluate Best Management Practices (BMPs) in Suisun Marsh to improve marsh water quality and address dissolved oxygen and methylmercury impairment. Characterize managed wetland responses to BMPs through water quality modeling.	Develop water quality model.	70	SF Bay Regional Board, SFEP, Suisun RCD	James Muller james.muller@sfestuary.org

Action Name	Task #	Task Description	Milestone	% Complete	Owner	SFEP Contact
Advance nutrient management in the Estuary	28.3	Update the Nutrient Management Strategy for San Francisco Bay based on monitoring and modeling and load reduction study results from Tasks 28-1 and 28-2.	Update Nutrient Management Strategy.	0	SF Bay Regional Board, SFEI	Karen McDowell karen.mcdowell@sfestuary.org
Engage the scientific community in efforts to improve baseline monitoring of ocean acidification and hypoxia effects in the Estuary.	29.1	Convene scientists from around the San Francisco Estuary, including from leading marine laboratories and universities, to identify potential impacts of ocean acidification and hypoxia on beneficial uses of the state's waters. Build a conceptual model that can inform design and implementation of monitoring approach.	Convene workshop and complete a meeting summary with recommended actions.	100	SFEI, SFEP	Heidi Nutters heidi.nutters@sfestuary.org
Champion and implement the CCMP	32.3a	On a five-year cycle, provide current information about the health status of the Estuary through an updated State of the Estuary Report. Continue to gather data for current indicators, and develop new indicators that provide needed information regarding Estuary health and align with actions in the CCMP.	Develop a strategy for updating the 2015 State of the Estuary Report, including advancing new indicators.	10	SFEP	Caitlin Sweeney caitlin.sweeney@sfestuary.org

Overall Estuary Blueprint Action % Complete

Action	%	Action	%	Action	%	Action	%
Action 1: Develop and implement a comprehensive, watershed-scale approach to aquatic resource protection	18	Action 9: Minimize the impact of invasive species	9	Action 17: Improve regulatory review, permitting, and monitoring processes for multi-benefit climate adaptation projects	49	Action 25: Address emerging contaminants	52
Action 2: Establish a regional wetland and stream monitoring program	13	Action 10: Increase the efficacy of terrestrial predator management	3	Action 18: Improve the timing, amount, and duration of freshwater flows critical to Estuary health	43	Action 26: Decrease raw sewage discharges into the Estuary	76
Action 3: Protect, restore and enhance tidal marsh and tidal flat habitat	7	Action 11: Increase carbon sequestration through wetland restoration, creation, and management	3	Action 19: Develop long-term drought plans	63	Action 27: Implement Total Maximum Daily Load projects in the Estuary	86
Action 4: Identify, protect, and create transition zones around the Estuary	34	Action 12: Restore watershed connections to the Estuary	36	Action 20: Increase regional agricultural water use efficiency	5	Action 28: Advance nutrient management in the Estuary	25
Action 5: Protect, restore, and enhance intertidal and subtidal habitats	8	Action 13: Manage sediment on a regional scale and advance beneficial reuse	19	Action 21: Reduce water use for landscaping around the Estuary	3	Action 29: Improve baseline monitoring of ocean acidification and hypoxia effects in the Estuary.	75
Action 6: Maximize habitat benefits of managed wetlands and ponds	13	Action 14: Demonstrate how natural habitats and nature-based shoreline infrastructure can provide increased resiliency.	7	Action 22: Expand the use of recycled water	5	Action 30: Reduce trash input into the Estuary	0
Action 7: Conserve and enhance riparian and in-stream habitats throughout the Estuary's watersheds	25	Action 15: Advance natural resource protection while increasing resiliency of shoreline communities in the Bay Area	68	Action 23: Integrate water into the updated Plan Bay Area and other regional planning efforts	67	Action 31: Foster support for resource protection and restoration by providing Estuary-oriented public access and recreational opportunities	41
Action 8: Protect, restore, and enhance seasonal wetlands	0	Action 16: Integrate natural resource protection into hazard planning	38	Action 24: Manage stormwater with LID and green infrastructure	89	Action 32: Champion and implement the CCMP	24



Implementation Committee OPERATING PROCEDURES (Last updated 11/15/17)

I. Introduction

The National Estuary Program (NEP) was established under Section 320 of the 1987 Clean Water Act as a U.S. Environmental Protection Agency place-based program to protect and restore the water quality and ecological integrity of estuaries of national significance. The San Francisco Estuary Partnership (SFEP), one of 28 NEPs around the country, is a collaboration of partners working to protect and restore the San Francisco Estuary (including the Bay and Delta)

The NEPs develop and implement Comprehensive Conservation and Management Plans (CCMPs), for their estuaries. Each NEP also has a Management Conference (or Implementation Committee) that consists of diverse stakeholders to implement the CCMP.

SFEP's Implementation Committee is made up of partners who are engaged in implementing the Estuary Blueprint (SFEP's CCMP). The committee works with SFEP staff to coordinate the implementation of the Estuary Blueprint, helps to set priorities for SFEP's work and approves annual work plans and budgets.

II. Committee Operation

- A. Meetings will be held quarterly in March, May, August, November, unless otherwise specified. Proposed meeting dates for the following year are provided to members at the August meeting of each year and finalized by the November meeting. Meetings will be held in the San Francisco Estuary region.
- B. SFEP staff in consultation with the committee Chair and Vice Chair will develop an agenda for each meeting. Committee members may suggest agenda items to the Chair, Vice Chair, or SFEP Director at any time. Suggestions will be added to a future meeting "Road Map" that will be provided at every meeting.

- C. Agenda and meeting materials will be emailed to members and posted on SFEP's website at least one week prior to the meeting date.
- D. A written summary of each meeting will be prepared by SFEP staff, approved at the following committee meeting, and posted on the SFEP website.

III. Meeting Structure/Ground Rules

- A. Meetings will be run by the Chairperson. At times when a dispute surfaces and/or a formal vote is necessary, the Chair has the responsibility to ensure that the interaction remains orderly.
- B. Should a formal process be needed, the Chair shall run the meeting according to Rosenberg's Rules of Order. (At the same time, as stated in the Rules there should always be flexibility as to the strictness of application of the rules - dependent on the particular situation and the members' knowledge of parliamentary procedure).
- C. Both members and non-members may speak at committee meetings after being recognized by the Chair. Members should be recognized first.
- D. The committee shall strive for a constructive, collaborative process, with active participation of all members and will conduct meetings according to the following ground rules:
 - All committee members take responsibility for the overall conduct and outcome of each meeting
 - Speak one at a time
 - Every perspective deserves to be heard
 - Be honest and respectful
 - Take sidebar conversations out of the room
 - Do not repeat points
 - Step up, step back (speak up to make your point, but make sure to not dominate the conversation)
 - W.A.I.T (ask yourself "Why Am I Talking"?) before speaking
 - Have fun

IV. Voting Procedures

- A. There are no quorum rules. Decisions are made by member representatives that are present at the meetings.
- B. Substantive items that are raised should be agendaized for future meetings.

- C. Motions may be made by any voting member of the committee. All motions must be seconded by a voting member of the committee.
- D. Procedural motions may be made and a vote taken at the same meeting. Motions for other than procedural issues may be made; however, only a non-binding intent vote can be taken at the meeting during which a non-procedural motion was first made.
- E. The Committee shall strive for a participatory or consensus process in discussing issues and arriving at a decision. Consensus is defined as general agreement of all members of the consensus group. Specifically, it is all members of the group being at level four or above on the following consensus scale:
 - 1. I can say an unqualified “yes” to the decision. I am satisfied that the decision is an expression of the wisdom of the group.
 - 2. I find the decision perfectly acceptable.
 - 3. I can live with the decision; I’m not especially enthusiastic about it.
 - 4. I do not fully agree with the decision and need to register my view about it. However, I do not choose to block the decision. I am willing to support the decision because I trust the wisdom of the group.
 - 5. I do not agree with the decision and feel the need to stand in the way of the decision being accepted.
 - 6. I feel that we have no clear sense of unity in the group. We need to do more work before consensus can be reached.
- F. Failing consensus, a vote shall be taken, with a simple majority (51%) of those present needed for a motion to pass. Each designated Committee member gets one vote. If both the primary and alternate representative for a Committee member entity are present at the meeting, there may be only one vote per Committee member entity.
- G. When a vote is taken, only the decision will be recorded. The actual vote count will only be used when the decision is close.
- H. The Committee may take action between meetings if necessary due to timing constraints. These actions shall be limited to business that has already been raised at a meeting and comment letters. In these instances, Committee members may be asked by the Chair to vote via email within a specific stated time period of no less than five (5) days. In these instances, unanimous consent (meaning no objections raised) is necessary for approval.

V. Membership

- A. Maintaining an effective and vibrant Committee depends in part on the active participation and commitment of the members. Committee positions need to be filled by people with the time commitment to make the four quarterly meetings and to contribute ideas and energy to the Committee.
- B. Members whose representatives do not participate in meetings will be asked to either designate replacement representatives or to step down from the Committee. Two missed meetings within a 12 month period will result in a warning, and three missed meetings in a 12 month period will require a replacement or resignation.
- C. Members represent organizations, not individuals. Each member should designate a primary and an alternate representative. If a primary or alternate representative of a Committee member vacates their position as a primary or alternate, the Director of SFEP will work with the member to identify a replacement representative.
- D. Changes to Committee membership (removing or adding member entities) must be approved by the Implementation Committee and the Executive Council. The Committee may convene an ad hoc member subcommittee to review Committee membership and recommend revisions to the full Committee.
- E. The Chair and Vice Chair will serve a two-year term, beginning in even-numbered years. The current Chair will solicit nominations for members who wish to serve as the upcoming Chair or Vice Chair, convening an ad hoc nominating committee if necessary to create a nomination slate. The slate will be sent to IC members in advance of the first meeting in an election year. The Committee will select these positions at the first meeting of each even-numbered year. The newly elected Chair and Vice Chair will assume their roles at the second meeting of even-numbered years. Because the San Francisco Bay Regional Water Quality Control Board (Regional Board) is a lead agency implementing the CCMP, at least one of the Chair or Vice Chair shall be a member of the Regional Water Board.
- F. Committee members express only their own viewpoints to the media. Committee members agree not to characterize the viewpoints of other committee members when contacted by media representatives about business related to SFEP, nor to use the media as means to unilaterally influence any process related to SFEP.

Road Map for IC Meetings

March 7, 9:30 am - 12:30 pm (San Francisco - 375 Beale Street)

Confirmed

- Draft work plan and budget
- Select Chair and Vice Chair

Potential

- Action 1: Watershed-based aquatic resource protection
- Action 4: Transition zone methodology and North Richmond Community Vision
- Action 13: Sedimatch
- Action 18: incorporating freshwater flow messages in partner materials
- Highway 37 Update
- Novato Creek Dredged Sediment Beneficial Reuse Project

May 23, 9:30 am - 12:30 pm (Oakland - 1515 Clay Street)

Confirmed

- Approve final work plan and budget

Potential

- Action 2: Regional Wetland Monitoring Program
- Action 15: BARC Resiliency Report
- Action 9: Invasive Species
- IRWM Program
- Estuary News Magazine

August 22, 9:30 am - 12:30 pm (San Francisco - 375 Beale Street)

Potential

- Resilient by Design
- Action 8: Grazing practices

November 7, 9:30 am - 12:30 pm (Oakland - 1515 Clay Street)