



# Director's Report

November 15, 2017

---

## PROGRAM HIGHLIGHTS

### 2017 State of the Estuary Conference



The State of the San Francisco Estuary Conference was held October 10-11, 2017 at the Oakland Scottish Rite Center. Over 800 people attended the 2 day event, which had over 90 speakers and 190 poster presenters. The program and abstracts are available on the conference web site: [www.sfestuary.org/soe](http://www.sfestuary.org/soe), and a slide show of some of the photos of the event will also be available.

At the conference, SFEP was honored to present IC members Arthur Feinstein and Barbara Salzman with a one-time *Estuary Legacy Award*. Sam Schuchat, Executive Officer of the

Coastal Conservancy, presided over the award presentation and via video recording, Senator Dianne Feinstein acknowledged their decades-long and tireless efforts to protect Bay habitats and wildlife. Congratulations Arthur and Barbara!



In addition, several partners were the recipients of an Outstanding Environmental Project Award from the Friends of the Estuary. Please visit the [Friends webpage](#) for information on the 2017 award winners.

## SF Bay Restoration Authority

The San Francisco Bay Restoration Authority (SFBRA) released its first Request for Proposals (RFP) in September, with proposals due the day of the IC meeting, November 15, 2017. The RFP, grant guidelines, a recording of the RFP webinar, and other related materials are available on the Grants tab of the SFBRA's web site: [www.sfbayrestore.org](http://www.sfbayrestore.org). The SFBRA expects to award its first round of grants in early 2018.

## Resilient By Design



The Resilient By Design (RbD) challenge is off to a fast-paced start. The 10 multidisciplinary design teams, the RbD staff, and the Research Advisory Council have toured various shoreline communities around the SF Bay, since kicking off the Collaborative Research phase in early September. This phase began with a full-day

orientation at the David Brower Center in Berkeley, where regional planners, academics, and social scientists provided an overview of SF Bay Area challenges and complexities. Over the weeks, the RbD team co-hosted week long tours of shoreline sites in the East Bay (Sept 11), North Bay (Oct 2), South Bay (Oct 16), and San Francisco (Nov 1). Included in the itineraries were informational panels of local and regional experts providing social and political context to the project opportunities. By December 8, the Research Advisory Committee will assign a site to each team. The final designs are due in the late spring of 2018, with a jury announcing the winner in May.

## SFEP and Partner Responses to The North Bay Fires

While the State of the Estuary Conference was taking place, devastating wildfires were tearing through the North Bay, scorching thousands of acres of homes, businesses, farmland, and wildland and casting a smoky pall over the conference. At SFEP, our thoughts and hearts go out to our many partners in the North Bay who are dealing with the aftermath. IC members from Sonoma County Water Agency, Regional Water Quality Control Board, Point Blue Conservation Science, Napa RCD, and others have begun the work of assessing the damage of natural resources and planning for recovery. In addition, the Bay Area Air Quality Management District (BAAQMD), MTC, and ABAG supported first responders and continue to support the ongoing response effort.

Our staff and other partners like the Bay Planning Coalition and Marin Municipal Water District have contributed funds and volunteer hours to help those impacted by the wildfires. If you would like to donate, here is a list of just a few of the organizations accepting online donations:

[Red Cross](#) (Select "California wildfires" from the dropdown menu)

[City of Santa Rosa](#) (in partnership with the United Way)

[Redwood Credit Union Community Fund](#) (in partnership with Senator Mike McGuire and others)

## NEW FUNDING

### Wetlands Regional Monitoring Program Plan

SFEP was recently awarded a Wetlands Program Development Grant by EPA Region 9 to develop a Wetland Regional Monitoring Program (WRMP) Plan for the San Francisco Bay. Key partners on the grant include SFEP, SFEI, the San Francisco Bay National Estuarine Research Reserve, EPA Region 9, CA Department of Fish and Wildlife and the San Francisco Bay Regional Water Quality Control Board. Over the 18 month period, the core team will convene a Steering Committee from a diverse array of experts on wetlands, community engagement and monitoring. The Steering Committee will focus their efforts on identifying the key management questions that will inform a monitoring program, critical data needs and finally, programmatic and funding options for a WRMP. To learn more about the project, go to [www.wrmp.org](http://www.wrmp.org).

## COMPLETED PROJECTS

### Water Trail Maps



SFEP is pleased to announce the completion of a series of interpretive and public access maps encompassing San Francisco and Suisun Bays. These maps, completed in partnership with the San Francisco Bay Area Water Trail, are part of an outreach effort meant to educate non-motorized small boaters on boating safety, environmental processes and ethics, and Water Trail launching and landing facilities. The Water Trail has also completed a new mobile-friendly website that encourages stewardship of Bay resources and provides the information boaters need to plan for a fun and safe day of adventure on the Bay. SFEP provided funding and worked with partners to create the environmental interpretive information found on the map and the website. The maps were also made with support from the State Coastal Conservancy and a generous grant from the North Bay Watershed Association. More information can be found online at [www.sfbaywatertrail.org](http://www.sfbaywatertrail.org).



## Transition Zone Methodology

We are excited to announce release of a new report on mapping the transition zone, entitled “Mapping the Transition Zone: Integrating the Upper Boundary and Bay Margin Methods”. The project team included Brian Fulfrost, and staff from the San Francisco Bay Joint Venture (SFBJV), San Francisco Estuary Institute (SFEI) and SFEP. The Task Force considered key management questions and map uses, as well as ideas for regional mapping methodology of existing and potential transition zone. Subsequent Task Force meetings considered the 2015 Baylands Habitat Goals Science Update’s recommended use of distinct and overlapping ecosystem-based subzones, key audiences, and review of existing (the Bay Margin) and emerging mapping (the Upper Boundary) methodologies. The work of the task force was to clarify and refine how these methodologies overlap, and how they are different so that intended users can better navigate the two approaches. More information, including a link to the report, can be found at: <http://www.sfestuary.org/vision/>.

## Integrated Regional Water Management (IRWM) Grants funded under California Proposition 84 Bond Funds via the Department of Water Resources

Four additional projects have been completed: two from Round 2 and two from Round 3, making a total of ten projects completed out of the total of 36 projects under IRWM Rounds 2, 3 & 4.

### Round 2

#### **1. Regional Groundwater Storage and Recover Project Phase 1A: South Westside Basin, Northern San Mateo County**

*Project Sponsor: San Francisco Public Utilities Commission*

This Project constructed 6 groundwater wells and treatment systems in Daly City, Colma and South San Francisco as part of SPUC’s effort to install a total of roughly 13 – 16 groundwater wells, key components of SFPUC’s Water System Improvements. Together

these wells will store up to 60,500 acre-feet in the South Westside Groundwater Basin; a capacity that will provide approximately 7.5 years of water during drought years.

## **2. Lagunitas Creek Watershed Sediment Reduction and Management Project**

### ***Project Sponsor: Marin Municipal Water District***

Tasked with replacing 3 failing culverts to reduce stream sedimentation as well as enhancing salmonid habitat, due to extensive permitting requirements and the significant increase in construction costs, only one culvert was replaced at Jewell Creek as part of this Project. The Jewell Creek culvert was prioritized because it would reduce stream sedimentation by 2,495 cubic yards, greater than the other two culverts combined.



*New Culvert Outfall Erosion Stabilization*

## **Round 3**

### **3. DERWA Phase 3 Recycled Water Expansion Project**

#### ***Project Sponsors: Dublin-San Ramon Services District and East Bay Municipal Utility District***

This Project constructed nine miles of recycled water pipelines throughout Central and West Dublin and San Ramon Valley, which will make possible the replacement of approximately 867 acre feet per year of potable water with recycled water.

#### 4. Sunnyvale Continuous Recycled Water Production Facilities and Wolfe Road Pipeline Project

*Project Sponsor: Santa Clara Valley Water District*

This Project installed a new recycled water pipeline and implemented improvements at the Sunnyvale Water Pollution Control Plant to offset approximately 1,680 acre feet per year of potable water demand and improve water quality.



*Sunnyvale Upgraded Treatment Plant*

## OUTREACH

### Estuary Blueprint Template Presentation Available

At the August 23 IC meeting, Heidi Nutters presented a draft template presentation of the Estuary Blueprint for IC members to use. Feedback from that meeting has been incorporated into a revised version of the presentation template and it is now available! The 17-slide presentation includes speaker notes and can be modified as needed for various uses and audiences. The presentation template in Google Slides can be accessed via [this link](#), or SFEP staff can email you a 7MB PowerPoint version of the presentation upon request. A copy of the slides with notes is included in the Director's Report.

## Estuary News



The September issue of Estuary News explores historic places in the Delta, discusses options for keeping Highway 37 dry and surrounding habitats wet, and reports on Bay Area preparations for drought and sea level rise. Other stories cover key purchases in watershed headwaters, new non-lethal techniques for testing sturgeon for selenium, and the 25th anniversary of the RMP.

[Explore the September issue online.](#)

## Clean Vessel Act Program

The CVA program continues to work with local, state, and national partners in their efforts to decrease sewage discharge into the San Francisco Bay and Sacramento-San Joaquin Delta. Three staff traveled to the annual States Organization for Boating Access conference in Anchorage, Alaska to give two presentations and to represent California in the Federal Training Workshop that provided focused feedback on federal guidelines for the CVA program. SFEP presented on the newly developed Pumpout Nav mobile app and the California Pumpout Report released earlier this year. SFEP also attended the Marine Recreation Association and the California Association of Harbormasters and Port Captains conferences in Monterey and Oakland, respectively. Staff presented on the Pumpout Nav app and demonstrated the app in the exhibitor section. SFEP is pleased to announce that the app is currently in phase II of development that will streamline all reporting and admin processes for the app and the associated database. This work is expected to be completed by the end of the year.



## PROGRAM MANAGEMENT

### California Sea Grant Fellow Matched!

Heidi Nutters and I attended a two-day California Sea Grant Fellow “matching workshop” in Sacramento in October, where we interviewed 23 Sea Grant finalists. I am pleased to announce that as a result of that process we have been matched with Ian Kelmartin. Ian is finishing up his Master’s in Fisheries Biology from Humboldt University. He has extensive experience in research, data management and analysis, and outreach. We are looking forward to Ian joining the SFEP team on February 5, 2018 for one year to help advance the Wetlands Regional Monitoring Program effort as well as other SFEP projects and programs.



### West Coast NEP Meeting



On October 26, EPA Region 9 hosted a meeting of all the West Coast NEP directors (Puget Sound, Lower Columbia, Tillamook, San Francisco, Morro Bay, and Santa Monica Bay) and the EPA staff from the regions that work with those NEPs. The meeting objective was to advance NEP effectiveness by elevating support for and among West Coast NEPs and EPA Regions 9 and 10, share information

and innovations, and identify needs and opportunities. Meeting topics included: development and tracking of CCMPs, monitoring and science, climate change, and public engagement. Joining the beginning of the meeting via video from Washington DC was Surabhi Shah, EPA Partnership Programs Branch Chief.

## NEP Fall Tech Transfer Conference

Darcie Luce and I attended the 2017 NEP Tech Transfer Conference in Boston in November. The 3-day conference included representatives of most of the 28 NEPs as well as EPA headquarters staff and covered topics of mutual interest to all the NEPs including economic valuation, measuring progress, reaching underserved communities and populations, science and monitoring, innovations in NEP operations, restoration, and communications. EPA Partnership Programs Branch Chief Surabhi Shah opened the meeting by expressing her admiration for the NEPs and optimism for EPA's work with the NEPs going forward.



## ABAG/MTC Consolidation Update

The Partnership is scheduled to move to the MetroCenter (at 375 Beale Street in San Francisco) in early January, 2018. The IC's first meeting of 2018, March 7, will be held at the MetroCenter.



# Estuary Blueprint

*32 Actions for a Healthy Estuary*



## A regional collaborative blueprint for the future of the Estuary

*Where do we want to be in 2050 and what can we do in the  
next five years to get there?*



- The 2016 Estuary Blueprint (or CCMP) Revision is a pragmatic 5-year plan for the Estuary based on visionary goals for the future.
- In taking this approach, we are able to set achievable actions every five years to support a broader vision for health of the Estuary





## How Healthy is the Estuary?

- Upper Estuary (Suisun Bay and Delta) is in **fair to poor condition and getting worse**, while the lower Estuary (San Francisco Bay) is in **better health but jeopardized by climate change**.
- Human activities have severely altered physical processes such as freshwater flows and sediment movement.
- Impairment is intertwined with habitat loss, degradation, and fragmentation contributing to unproductive food webs, smaller and declining fish and wildlife populations and dominance of invasive species.

These findings come from the 2015 State of the Estuary Report which reports on the health of the estuary across number scientific indicators of health.



## Can We Improve the Health of the Estuary?

- The 2015 State of the Estuary Report suggests that we can if we choose to make the investment
- Gains have already been made on water quality, tidal marsh restoration and wildlife populations.
- Climate change jeopardizes the health of all parts of the Estuary



These findings come from the 2015 State of the Estuary Report which reports on the health of the estuary across number scientific indicators of health.



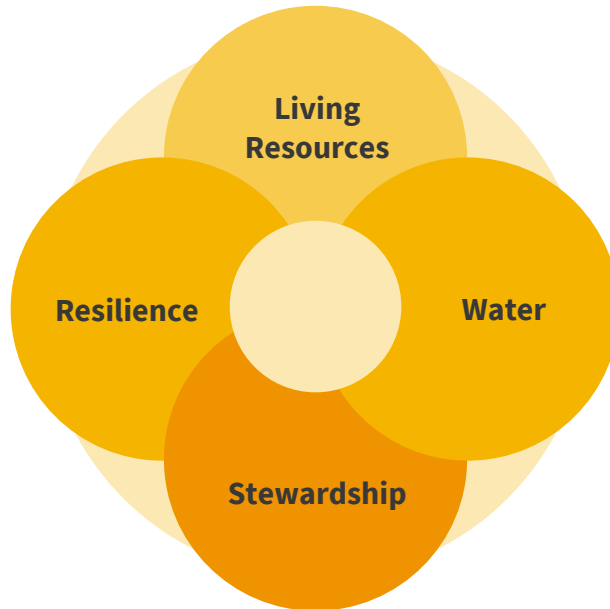
## What Will It Take to Achieve a Health Estuary?



- Investment in restoring critical physical processes and habitats
- Greater efficiencies in human use of the system's freshwater
- Watershed-based regional approach to managing sediment and freshwater for tidal wetlands
- Habitat connectivity in light of climate change for wildlife conservation
- Collaboration, adaptation, flexibility and resilience

These findings come from the 2015 State of the Estuary Report which reports on the health of the estuary across number scientific indicators of health.

## Driven by Four Key Goals



- The San Francisco Estuary Partnership is one of 28 National Estuary Programs across the Country
- Each National Estuary Program is required to updated their CCMP every five years
- We call our CCMP “The Estuary Blueprint”
- The first CCMP in the San Francisco Estuary was in 1993, and the 2016 CCMP (or Estuary Blueprint) represents a major overhaul of the Plan

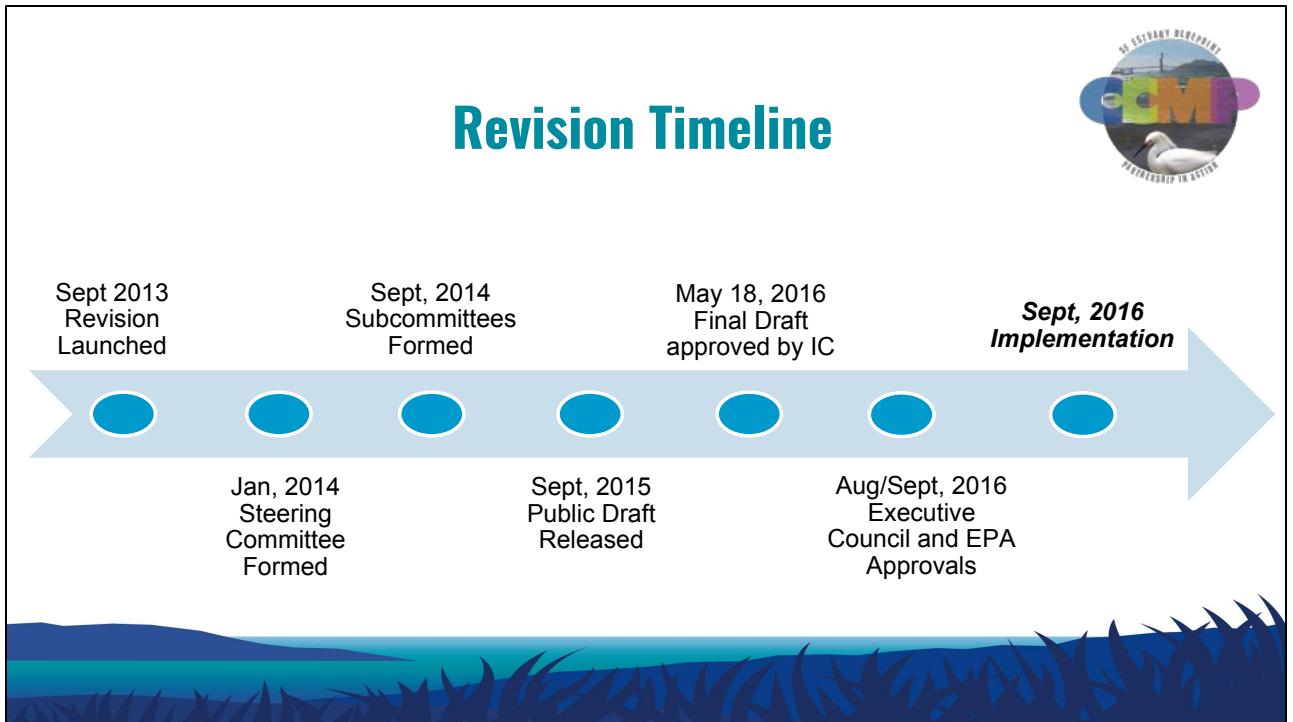




## Goals

- Sustain and improve the Estuary's habitats and living resources.
- Bolster the resilience of Estuary ecosystems, shorelines, and communities to climate change.
- Improve water quality and increase the quantity of fresh water available to the Estuary.
- Champion the Estuary.

- The four goals of the Estuary Blueprint were selected by stakeholders
- The 32 Actions in the Estuary Blueprint are cross-cutting and are designed to support multiple goals
- The actions range on topics within these goals. To find out more, check out the website <http://www.sfestuary.org/ccmp/>



- The Estuary Blueprint Revision process was launched in September 2013
- The process included extensive stakeholder involvement of a broad range of organizations from the upper and lower Estuary (SF Bay & Delta)
- A final draft was approved by the San Francisco Estuary Partnership Implementation Committee (or IC) in May 2016
- Stakeholders moved into implementation in September 2016



Credit: Darcie Luce



There are 32 Actions in the Estuary Blueprint that span the goals described previously. Recently, at the State of the Estuary Conference in October 2017, artist Cristina Victor created a visual representation of these 32 Actions. The 32 Actions are intended to be implementable within the 5-year span of the Blueprint.

*“The CCMP catalyzes the work of others -- setting goals, defining actions, and aiding in efforts to collaborate among multiple agencies and organizations”*  
*Amy Hutzel - Coastal Conservancy*



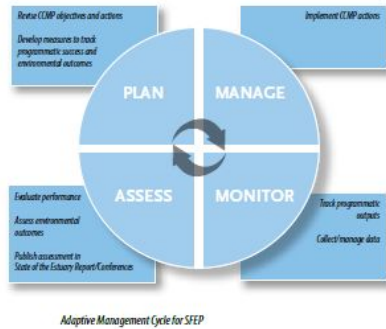
*“The CCMP is the framework for conservation of the San Francisco Estuary into the future”*  
*Mike Vasey - SF Bay National Estuarine Research Reserve*



- These quotes are from two San Francisco Estuary Partnership Implementation Committee members who were involved in adoption of the Estuary Blueprint
-



# Implementation



Over 80 agencies, non-profits, businesses and Universities are involved in completion of tasks

*You can follow progress on any of the 32 Estuary Blueprint Actions at our website!*

- Now that we are in the implementation phase of the Estuary Blueprint, over 80 organizations are working to complete the 32 Actions within the Plan
- The new SFEP website includes a number of tracking tools to see progress on Actions

## Wetland restoration IS working!



Many partners around the Estuary help to implement key Actions in the Estuary Blueprint, to **restore living resources and improve habitats** including:  
Action 3, 4, 5, 6, 7, and 8.

Thanks to our partners at the San Francisco Bay Joint Venture for producing this video!

Restoring and enhancing living resources is one focus area of the Estuary Blueprint. Actions 3-8 focus on tidal marsh and tidal flat, transition zones, intertidal and subtidal, managed wetlands and ponds, riparian and in-stream and finally seasonal wetland habitats. This is video is one in a series developed by the San Francisco Bay Joint Venture focusing on successful wetland restoration projects around the Estuary.

# Success Stories

## Delta Conservancy Awarded for New Carbon Methodology



In April 2017, the [American Carbon Registry](#) presented the Innovation Award to the [Delta Conservancy](#) and its partners for the development of a landmark carbon offset methodology to quantify greenhouse gas emission reductions from the restoration of wetlands in the Delta and along the California coast.



Levees and subsided farmland in the Delta  
Photo: Department of Water Resources

**Completion of methodology marks implementation of**  
[Estuary Blueprint](#) **Task 11.3**

- Project staff have developed a number of success stories that can be found on the website
- This success stories covers completion of a new carbon methodology to quantify greenhouse gas emissions reductions from the restoration of wetlands in the Delta and along the CA coast
- The science-based methodology combines data and restoration techniques to create a carbon offset project development framework which can be used to seek funding for restoration or habitat enhancement projects
- You can read the full success story at the Estuary Blueprint website

## Success Stories

### Climate Change and Community Built into Dotson Family Marsh



View of San Pablo Bay from the newly dedicated Dotson Family Marsh  
Photo: EBRPD

After decades of efforts to protect a critical part of the Richmond shoreline, the East Bay Regional Park District recently celebrated the official dedication of the Dotson Family Marsh and Atlas Road Bridge at Point Pinole Regional Shoreline.

**This innovative planning advances  
Tasks 4.4 and 31.2 of the [Estuary Blueprint](#)**

- This success story completes Task 4.4 and 31-2 of the Estuary Blueprint
- Dotson Family Marsh, formerly known as Breuner Marsh, is a 150-acre site near Pt. Pinole in San Pablo Bay. Parchester Village residents in Richmond have passionately fought for decades for its protection, restoration and for public access.
- You can read the full success story at the Estuary Blueprint website

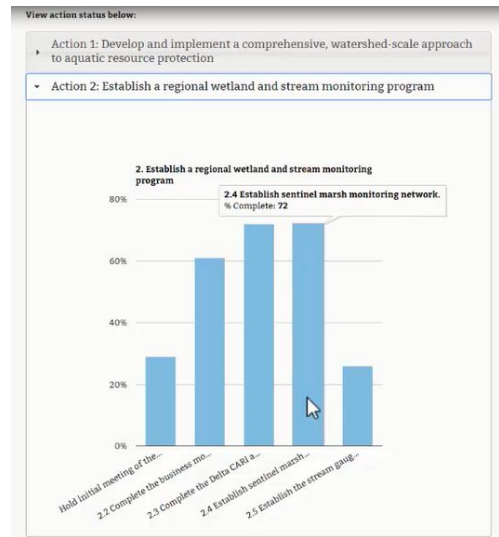
# Success Stories

[Add additional success stories here]



[sfestuary.org/ccmp/](http://sfestuary.org/ccmp/)

- Funding Analysis
- Progress Tracker
- Success Stories
- Sign up for our Quarterly Newsletter



- The website has lots of resources for getting more involved with tracking and following Estuary Blueprint implementation
- There are a number of interactive tools to help you see progress, understand the Actions and read more



## Get Involved!

- Collaborate with SFEP staff on covering your Estuary Blueprint-related projects in a success story
- Sign up for our quarterly newsletter
- Track implementation of Actions



- There are several ways to get more engaged with the Estuary Blueprint
- SFEP staff can help to develop a success story on one of your projects that links to the Estuary Blueprint
- There is a quarterly newsletter with more information
- You can track implementation of actions