

ECONOMIC SUSTAINABILITY: THE HUMAN SIDE OF THE DELTA

Michael Machado, Delta Protection
Commission

Economic Sustainability Plan

Context

- To be incorporated in the DSC's Delta Plan, the ESP must support the coequal goals of “providing a more reliable water supply for California and protecting, restoring and enhancing the Delta ecosystem.”
- Legislation also states that the coequal goals “shall be achieved in a manner that protects and enhances the unique cultural, recreational, natural resource, and agricultural values of the Delta as an evolving place.”

ESP Goals

- Identify and measure key components of the Delta economy that are directly connected and dependent on the natural resources of the Delta.
- Evaluate trends and future conditions, and develop strategies to enhance and sustain the Delta economy over time.
- Evaluate the impact of various proposals for the Delta on regional economic sustainability.
- Recommend actions and strategies that support economic sustainability and are

Primary and Secondary Zones of the Sacramento-San Joaquin Delta

Population Trends, 1990 - 2010

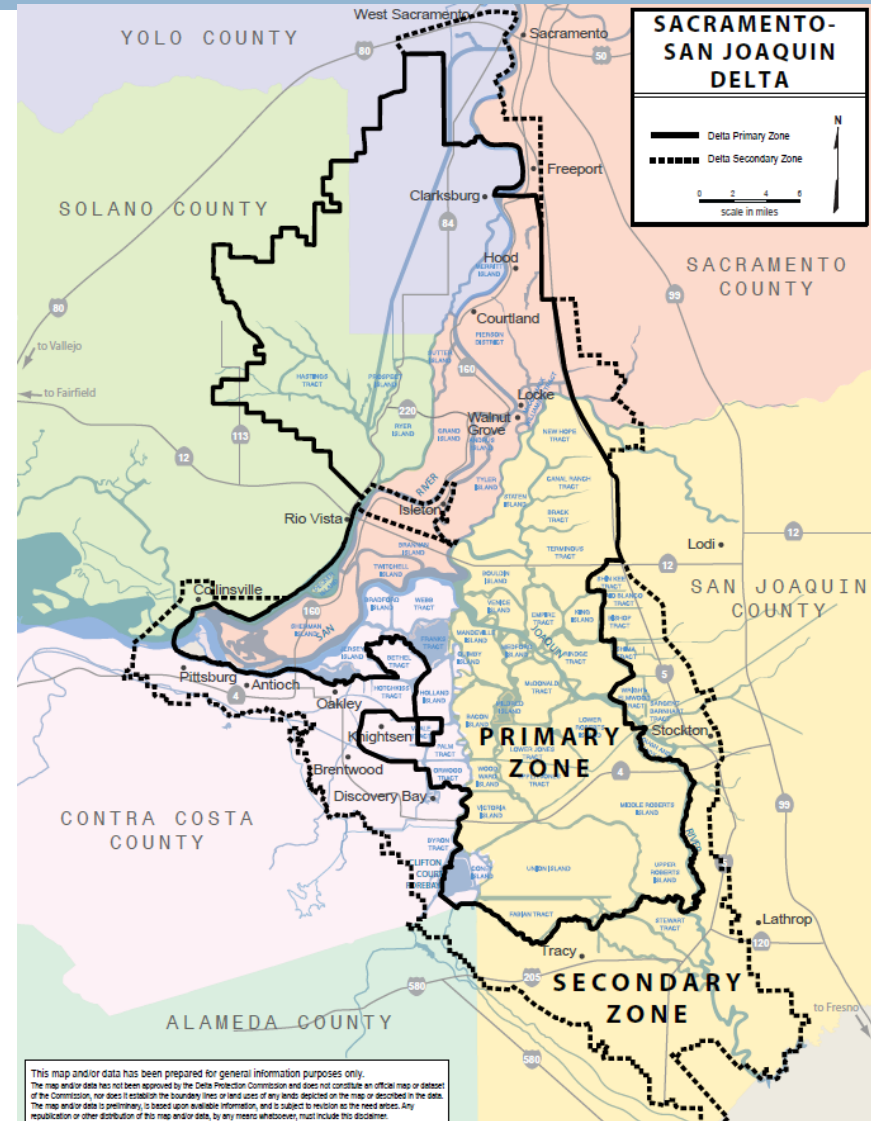
Primary Zone: steady around 12,000

Secondary Zone:

- 360,000 in 1990
- 560,000 in 2010
- 56% growth, annual 2.2% growth
- 20% of 5 Delta county growth
- Majority of population is in Contra Costa and San Joaquin Counties

California:

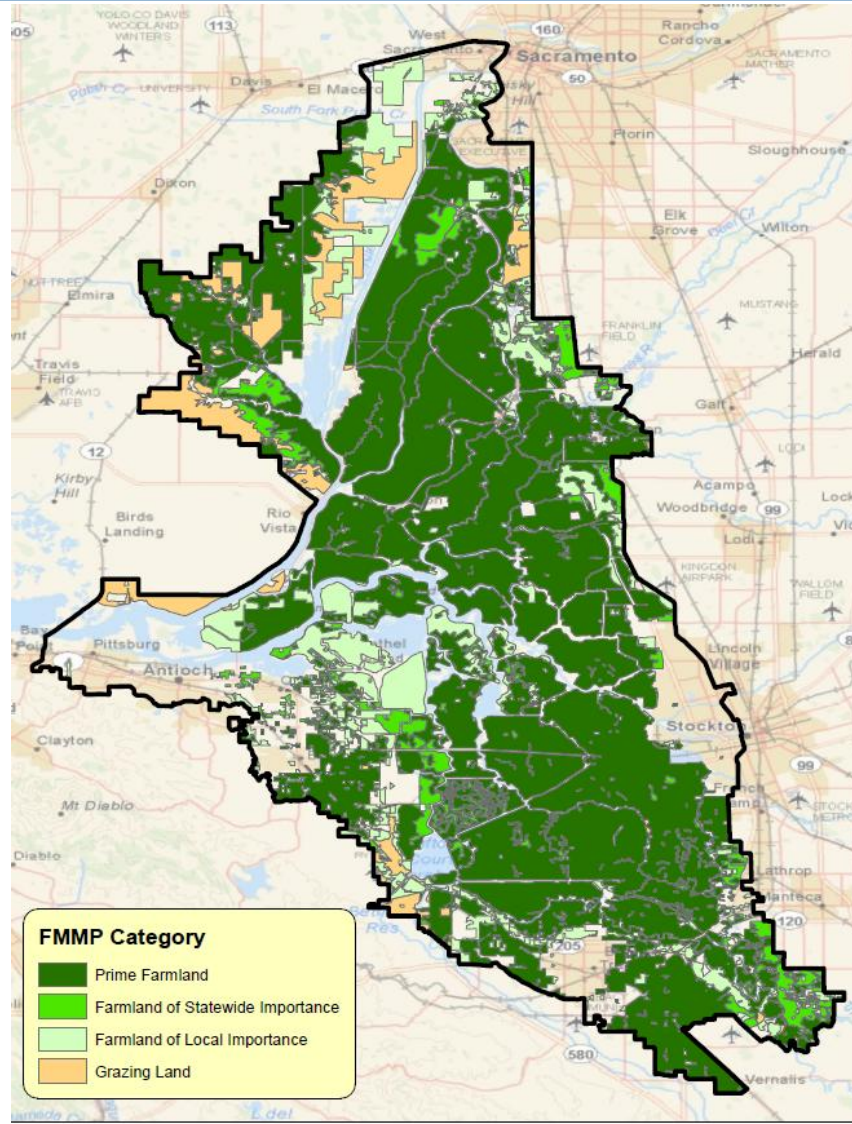
- 25% growth, annual 1.1% growth



Three Key Economic Contributions of Delta Resources to the Regional Economy

- Agriculture
- Recreation and Tourism
- Infrastructure Services
 - ▣ Transportation
 - ▣ Energy
 - ▣ Water

FMMP Delta Farmland Coverage



Economic Impact of Delta Agriculture

- Agriculture production (\$662m crops, \$93m animal)
 - 9,250 jobs, \$635 million in value added (i.e. income), and \$1.3 billion in output across 5 Delta counties.
 - 12,360 jobs, \$761m value added across California
- Including local sourced canneries and wineries.
 - 13,700 jobs, \$1.1 billion in value added, \$2.8 billion in output across 5 Delta counties.
 - 23,000 jobs, over \$1.9b in value added across

Economic Impact of Delta Recreation and Tourism

- Five County Impact from estimated \$251 million in-Delta spending.
 - ▣ 2,700 jobs, \$152 million in value added, \$284 million in output.
- California Impact includes additional \$200 million in out-of-Delta trip related spending
 - ▣ 5,000 jobs, \$325 million in value added.
- Adding Delta urban edge recreation and non-trip expenditures (i.e. boat dealers and repair) would likely increase impact by 10-20%.

Four Key Issues for Economic Sustainability in the Delta

- The Levee System
- Water Quality and Supply
- Present and Future Contribution of Agriculture, Recreation and Tourism
- Sustainable Legacy Communities: Where the Challenges and Strategies Come Together



Impact of Water Supply and Ecosystem Restoration Proposals on the Delta Economy

1. Isolated Conveyance: 15,000 cfs tunnel
2. Habitat Proposals
 - a. Yolo Bypass Fishery Enhancement
 - b. San Joaquin River Floodplain
 - c. Tidal Marsh Restoration (up to 65,000 acres)
 - d. Natural Communities Protection: Agricultural conservation easements.
3. Open Water Proposal (evaluated 6 islands, not 20+)
4. Increased Regulation by Stewardship Council
5. Delta Vision Economic Development

Existing Statutes



- 1850 Swamp and Overflow Land Act
- Water Code Sections 12200-12205



QUESTIONS?

